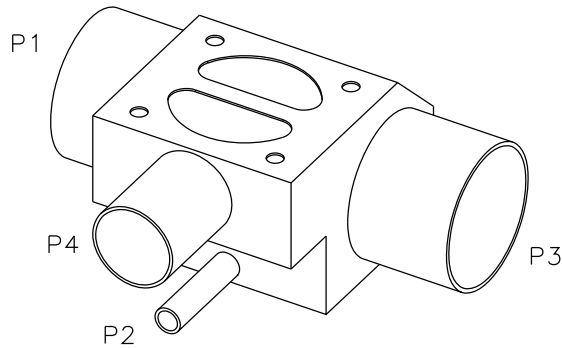
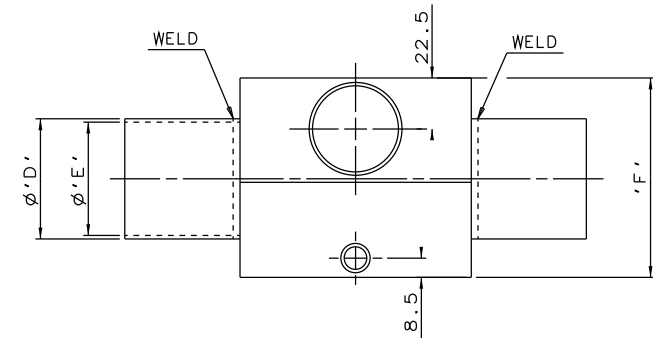
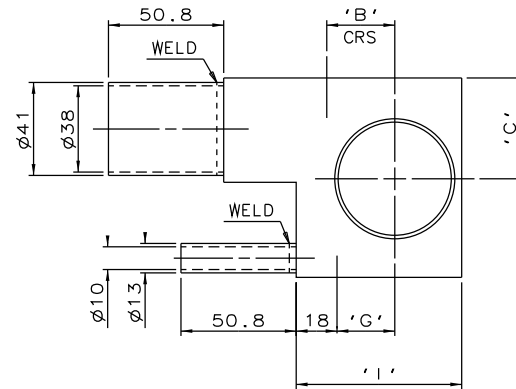
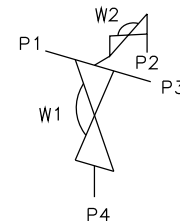
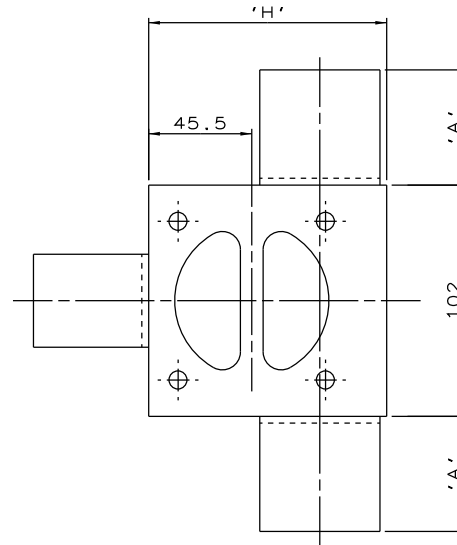


DN40 TO DN50
MAINLINE ONLY



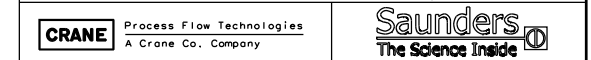
DN65 TO DN100
MAINLINE ONLY



ORIENTATION AS
PER P&ID DIAGRAM
FOR OPTIMUM
DRAINABILITY.

MAINLINE SIZE	A	B	C	ØD	ØE	F	G	H	I	BODY WEIGHT
mm	mm	mm	mm	mm	mm	mm	mm	mm	mm	Kgs
DN40	50.8	24.0	41.5	41.0	38.0	88.0	21.5	93.0	63.0	3.9
DN50	50.8	30.0	44.5	53.0	50.0	88.0	25.5	105.0	73.0	4.0
DN65	50.8	38.0	49.5	70.0	66.0	88.0	35.5	122.0	92.0	3.7
DN80	50.8	45.5	55.5	85.0	81.0	101.0	42.0	137.0	106.0	4.1
DN100	101.6	55.0	62.0	104.0	100.0	117.0	52.5	156.0	126.0	4.9

The information on this sheet is Private and Confidential and is the property of Crane Process Flow Technologies Limited and must not be published directly or indirectly in any manner whatsoever without the written permission of the Company and must not be used in any way detrimental to their interests.
© Crane Process Flow Technologies



Title
SCHEDULE OF LEADING DIMENSIONS FOR DN40
WEIR 'T' BODY WITH DN8 BACK SAMPLE
ALL ENDS BUTT WELD DIN 11850 S1/S2 TUBING

Drawn JRD	Date 19.11.12	UNCONTROLLED IN HARD COPY FORMAT	
Checked RND	Date 19.11.12		
First Angle Projection Method E	DO NOT SCALE	Drawing No. WEB-255	Issue. 1