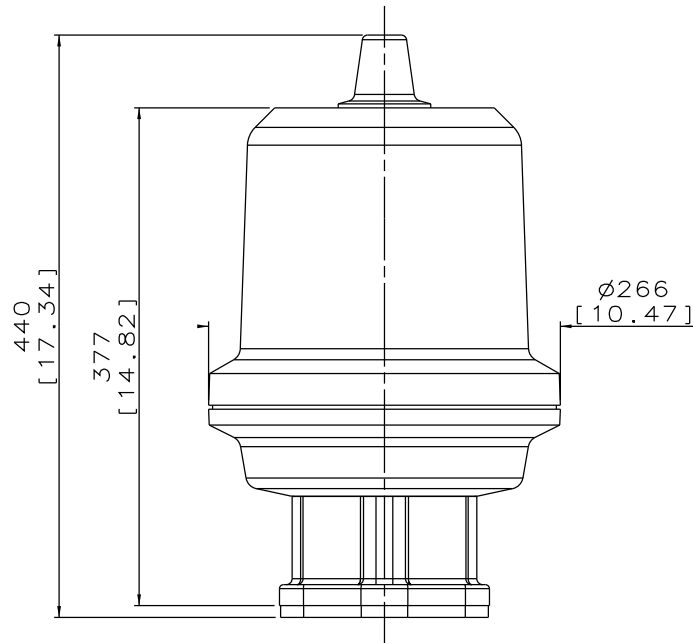
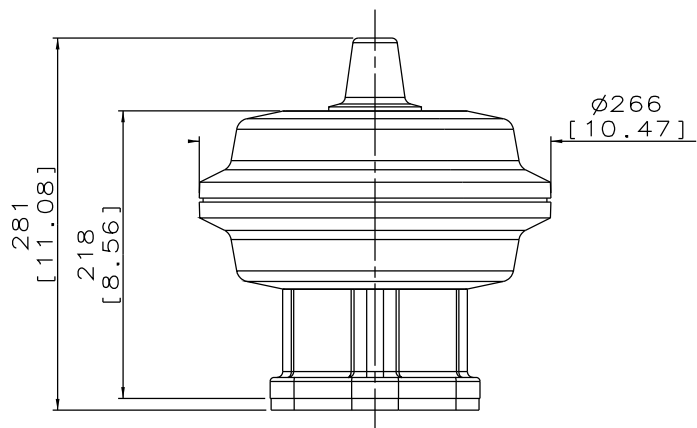


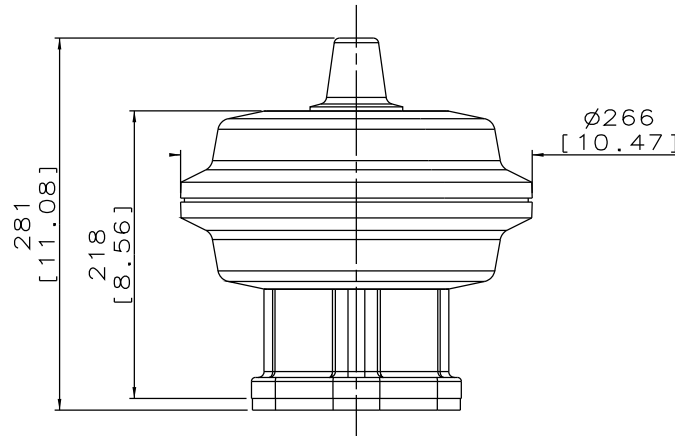
SPRING CLOSING SPRING
 PACK F1 - F5
 WEIGHT (HEAVIEST SPRING) = 32kg



SPRING CLOSING SPRING
 PACK G1 - G5
 WEIGHT (HEAVIEST SPRING) = 38kg



SPRING OPEN
 WEIGHT = 16.5kg



DOUBLE ACTING
 WEIGHT = 15.5kg

<small>The information on this sheet is Private and Confidential and is the property of Crane Process Flow Technologies Limited and must not be published directly or indirectly in any manner whatsoever without the written permission of the Company and must not be used in any way detrimental to their interests. © Crane Process Flow Technologies</small>			
CRANE Process Flow Technologies A Crane Co. Company		Saunders The Science Inside	
Title LEADING DIMENSIONS FOR DN80 ECX ACTUATOR ALL MODES.			
Drawn RND	Date 29.03.12	UNCONTROLLED IN HARD COPY FORMAT	
Checked JRD	Date 29.03.12		
First Angle Projection Method E		DO NOT SCALE	Drawing No. WEB-248
			Issue. 1