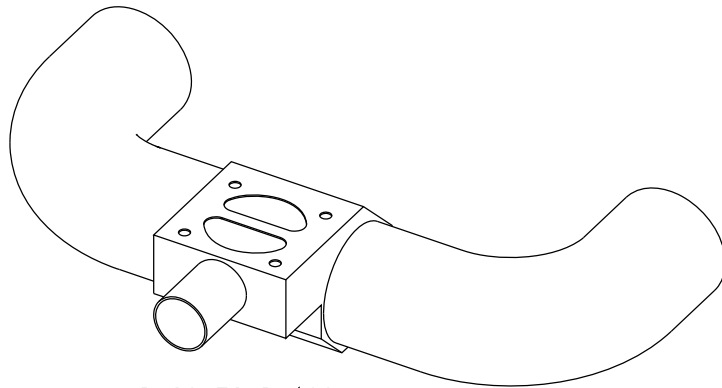
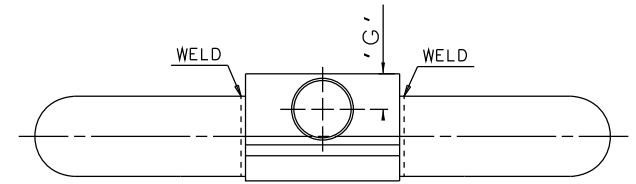
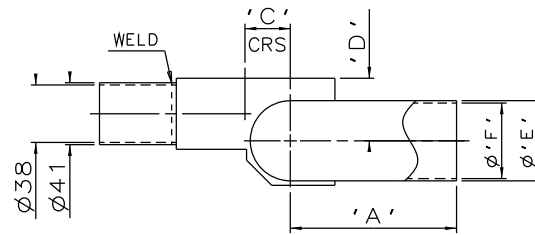
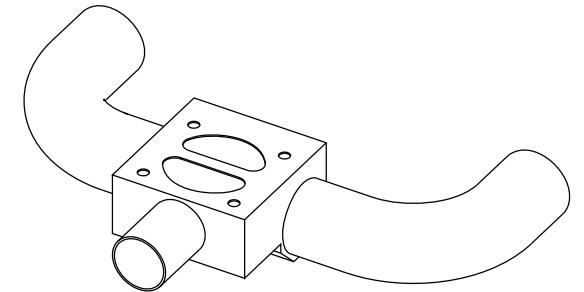
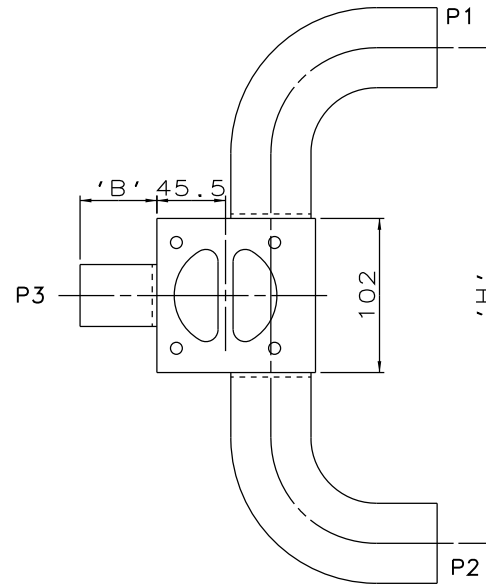


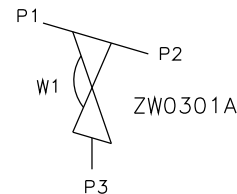
DN40 MAINLINE ONLY



DN80 TO DN100
MAINLINE ONLY



DN50 TO DN65 MAINLINE



ORIENTATION AS
PER P&ID DIAGRAM
FOR OPTIMUM
DRAINABILITY.

MAINLINE SIZE mm	A mm	B mm	C mm	D mm	ØE mm	ØF mm	G mm	H mm	BODY WEIGHT Kgs
DN40 DIN 11850 S2	100.0	50.8	24.0	35.0	41.0	38.0	23.5	308.0	3.4
DN50 DIN 11850 S2	110.0	50.8	30.0	41.4	53.0	50.0	23.5	328.0	3.4
DN65 DIN 11850 S1	120.0	50.8	38.0	49.5	70.0	66.0	23.5	348.0	4.8
DN80 DIN 11850 S1	145.0	50.8	45.5	55.5	85.0	81.0	23.5	412.0	5.2
DN100 DIN 11850 S1	155.0	50.8	55.0	62.0	104.0	100.0	23.5	432.0	6.3

The information on this sheet is Private and Confidential and is the property of Crane Process Flow Technologies Limited and must not be published directly or indirectly in any manner whatsoever without the written permission of the Company and must not be used in any way detrimental to their interests.
© Crane Process Flow Technologies

CRANE Process Flow Technologies
A Crane Co. Company

Saunders
The Science Inside

Title			
SCHEDULE OF LEADING DIMENSIONS FOR DN40 WEIR 'T' BODY COMPLETE WITH: MAINLINE : DIN 11850 S2/S1 POINT OF USE BUTT WELD ENDS BRANCH : DN40 DIN 11850 S2 BUTT WELD END			
Drawn RI	Date 25.05.12	UNCONTROLLED IN HARD COPY FORMAT	
Checked RND	Date 25.05.12		
First Angle Projection Method E	DO NOT SCALE	Drawing No. WEB-196	Issue. 1