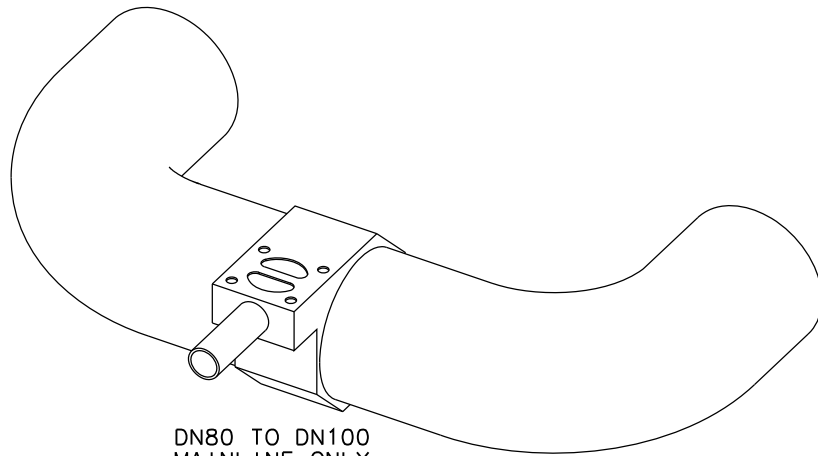
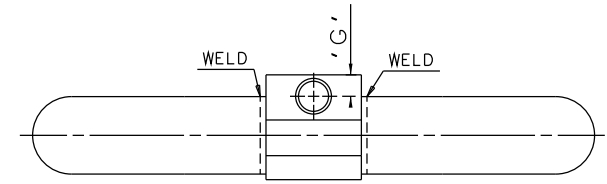
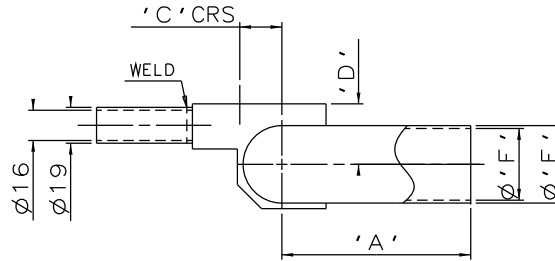
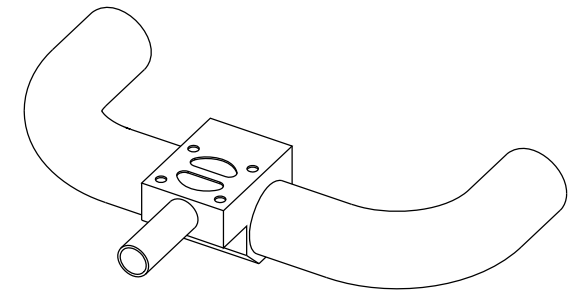
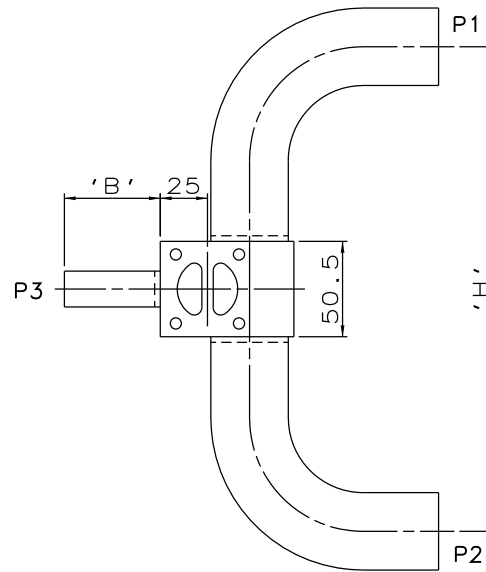


DN15 MAINLINE ONLY

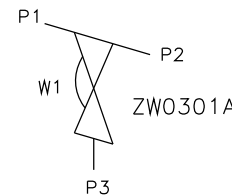


DN80 TO DN100
MAINLINE ONLY



DN20 TO DN65
MAINLINE ONLY

MAINLINE SIZE mm	A mm	B mm	C mm	D mm	ϕE mm	ϕF mm	G mm	H mm	BODY WEIGHT Kgs
DN15 DIN 11850 S2	51.0	50.8	11.3	22.0	19.0	16.0	11.5	158.5	0.7
DN20 DIN 11850 S2	65.0	50.8	13.3	25.0	23.0	20.0	12.5	186.5	0.7
DN25 DIN 11850 S2	90.0	50.8	16.3	28.0	29.0	26.0	11.4	236.5	0.8
DN32 DIN 11850 S2	95.0	50.8	19.3	32.0	35.0	32.0	11.5	246.5	1.1
DN40 DIN 11850 S2	100.0	50.8	22.3	32.0	41.0	38.0	11.4	256.5	1.2
DN50 DIN 11850 S2	110.0	50.8	28.3	38.0	53.0	50.0	11.4	276.5	1.6
DN65 DIN 11850 S1	120.0	50.8	36.3	43.0	70.0	66.0	11.5	296.5	2.5
DN80 DIN 11850 S1	145.0	50.8	43.8	48.0	85.0	81.0	12.5	360.5	3.2
DN100 DIN 11850 S1	155.0	50.8	53.3	54.0	104.0	100.0	12.5	380.5	3.9



ORIENTATION AS
PER P&ID DIAGRAM
FOR OPTIMUM
DRAINABILITY.

The information on this sheet is Private and Confidential and is the property of Crane Process Flow Technologies Limited and must not be published directly or indirectly in any manner whatsoever without the written permission of the Company and must not be used in any way detrimental to their interests.
© Crane Process Flow Technologies

CRANE Process Flow Technologies
A Crane Co. Company

Saunders
The Science Inside

Title
SCHEDULE OF LEADING DIMENSIONS FOR DN15
WEIR 'T' BODY COMPLETE WITH :
MAINLINE : DIN 11850 POINT OF USE S2/S1 BUTT WELD ENDS
BRANCH : DN15 DIN 11850 S2 BUTT WELD END

Drawn R1 Date 25.05.12

Checked RND Date 25.05.12

First Angle Projection Method E DO NOT SCALE

UNCONTROLLED IN
HARD COPY FORMAT

Drawing No. WEB-193 Issue. 1