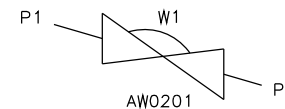
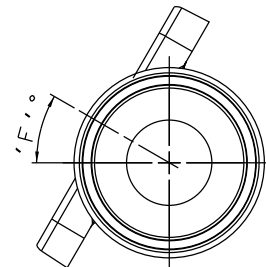


VALVE SIZE	A	B	C	ØD	ØE	F	BODY WEIGHT
mm	mm	mm	mm	mm	mm	DEGREES	Kgs
DN8	78.0	21.5	9.6	25.0	10.0	20	0.1
DN15	108.0	30.5	13.0	25.0	10.0	34	0.2
DN20	117.0	28.5	16.0	25.0	16.0	31	0.4
DN25	127.0	28.5	19.5	50.4	22.6	21	0.7
DN40	159.0	31.5	28.0	50.4	35.6	24	1.1
DN50	190.0	40.9	33.5	63.9	48.6	21	2.0
DN65	217.0	42.0	40.5	77.4	60.3	21	4.5
DN80	254.0	48.0	48.0	90.9	72.9	24	7.2



SELF DRAIN
POSITION IN
HORIZONTAL
ORIENTATION

DRAIN ANGLE TOLERANCE = +/-2°

The information on this sheet is Private and Confidential and is the property of Crane Process Flow Technologies Limited and must not be published directly or indirectly in any manner whatsoever without the written permission of the Company and must not be used in any way detrimental to their interests.
© Crane Process Flow Technologies

CRANE Process Flow Technologies
A Crane Co. Company

Saunders
The Science Inside

Title
SCHEDULE OF LEADING DIMENSIONS FOR 2-WAY MKIV
FORGED BODY WITH HYGIENIC CLAMP ENDS AND SMS 3008 BORE.

Drawn JRD Date 22.03.12

UNCONTROLLED IN
HARD COPY FORMAT

Checked RND Date 22.03.12

First Angle Projection Method E

Drawing No.
WEB-174 Issue.
1