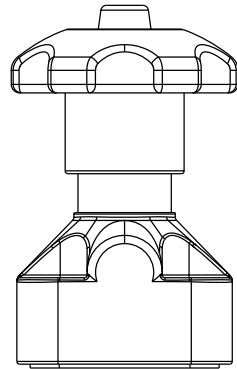
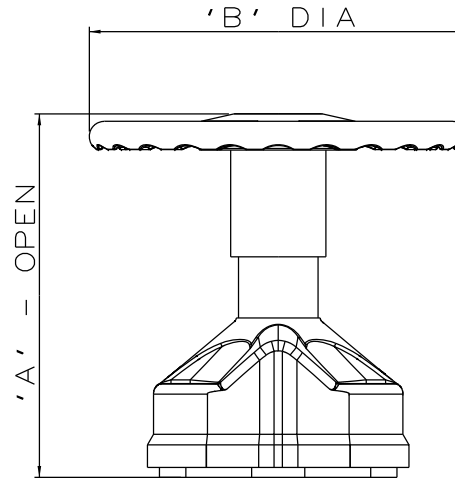


DN15/0.5 &  
DN20/0.75 ONLY

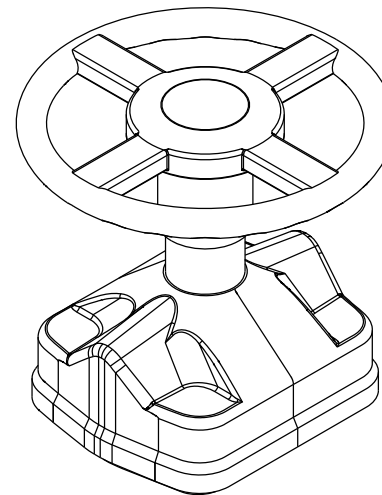
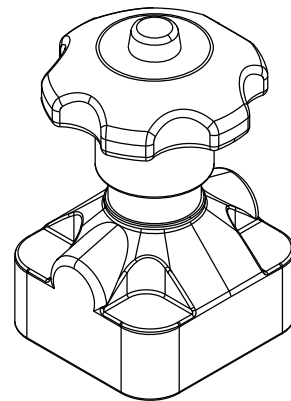
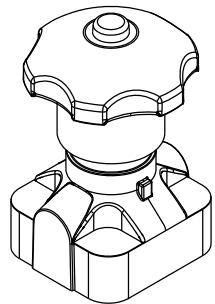


DN25/1.0 - DN65/2.5 ONLY



DN80/3.0 ONLY

VALVE SIZE	A		B		WEIGHT KGS
	mm	inch	mm	inch	
DN15	98	3.86	62	2.44	0.3
DN20	101	3.98	62	2.44	0.4
DN25	128	5.04	80	3.15	0.6
DN40	177	6.97	140	5.51	1.4
DN50	181	7.13	140	5.51	1.7
DN65	186	7.32	140	5.51	2.3
DN80	251	9.88	250	9.84	4.0



The information on this sheet is Private and Confidential and is the property of Crane Process Flow Technologies Limited and must not be published directly or indirectly in any manner whatsoever without the written permission of the Company and must not be used in any way detrimental to their interests.  
© Crane Process Flow Technologies

**CRANE** Process Flow Technologies  
A Crane Co. Company

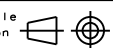
**Saunders**  
The Science Inside

Title  
LEADING DIMENSIONS FOR PES FLANGED  
BONNET ASSEMBLY  
CODE : RUBBER - H62 PTFE - H72  
SIZES DN15/0.5 - DN80/3.0

Drawn NAW Date 05.03.12

Checked RI Date 21.07.17

First Angle Projection Method E



DO NOT SCALE

UNCONTROLLED IN  
HARD COPY FORMAT

Drawing No.  
WEB-149 Issue.  
3