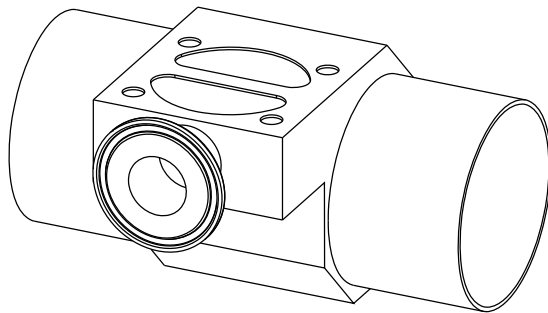
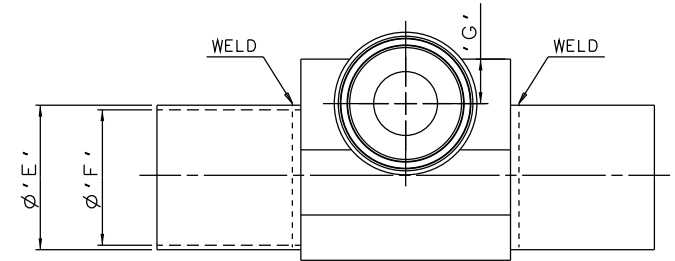
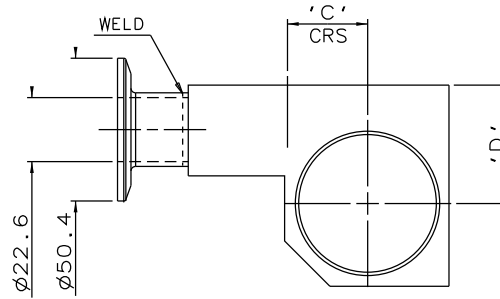
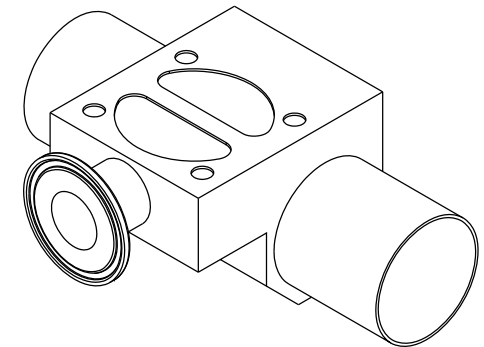
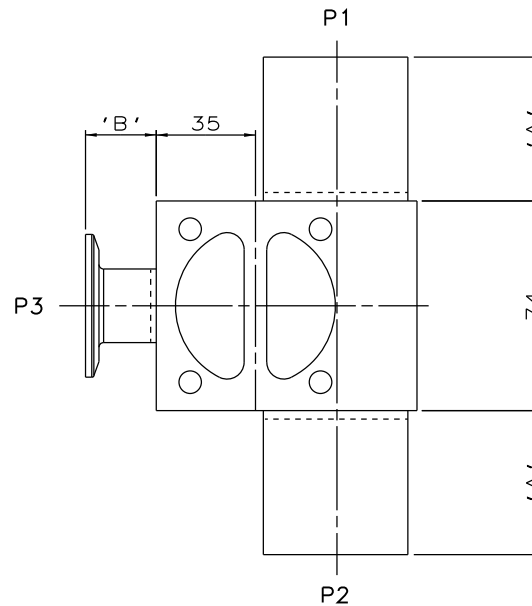


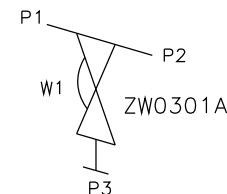
DN25 MAINLINE ONLY



DN80 TO DN100
MAINLINE ONLY



DN40 TO DN65
MAINLINE ONLY



ORIENTATION AS
PER P&ID DIAGRAM
FOR OPTIMUM
DRAINABILITY.

MAINLINE SIZE mm	A mm	B mm	C mm	D mm	øE mm	øF mm	G mm	BODY WEIGHT Kgs
DN25	50.8	25.0	15.3	26.2	25.0	22.6	14.5	1.3
DN40	50.8	25.0	21.8	35.0	38.0	35.6	14.5	1.4
DN50	50.8	25.0	28.3	41.8	51.0	48.6	15.7	1.8
DN65	50.8	25.0	34.2	46.0	63.5	60.3	14.5	2.0
DN80	50.8	25.0	40.5	48.0	76.1	72.9	15.7	1.9
DN100	101.6	25.0	53.0	57.0	101.6	97.6	14.5	2.9

The information on this sheet is Private and Confidential and is the property of Crane Process Flow Technologies Limited and must not be published directly or indirectly in any manner whatsoever without the written permission of the Company and must not be used in any way detrimental to their interests.
© Crane Process Flow Technologies

CRANE Process Flow Technologies A Crane Co. Company	Saunders The Science Inside
Title SCHEDULE OF LEADING DIMENSIONS FOR DN25 WEIR 'IT' BODY COMPLETE WITH : MAINLINE : BUTT WELD SMS 3008 ENDS BRANCH : DN25 HYGIENIC CLAMP END WITH SMS 3008 BORE	
Drawn JRD Date 27.02.12	UNCONTROLLED IN
Checked RND Date 27.02.12	HARD COPY FORMAT
First Angle Projection Method E	DO NOT SCALE
Drawing No. WEB-144	Issue. 1