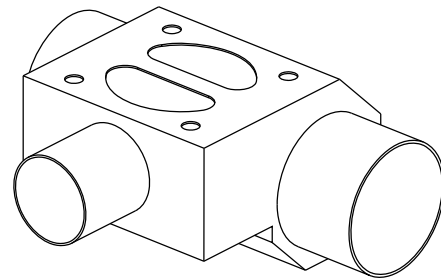
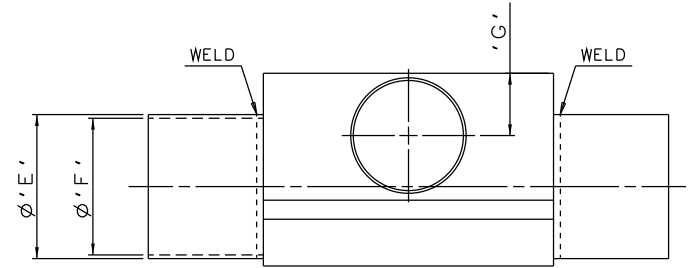
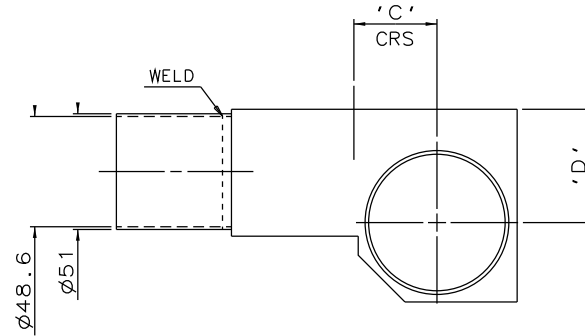
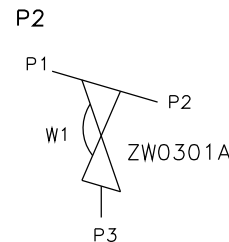
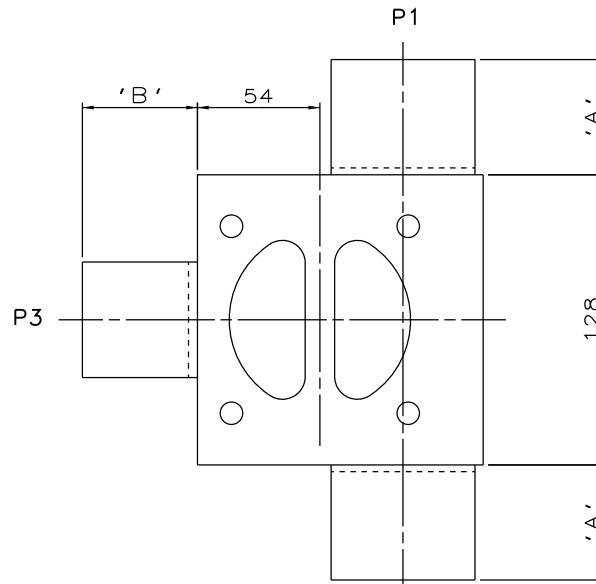


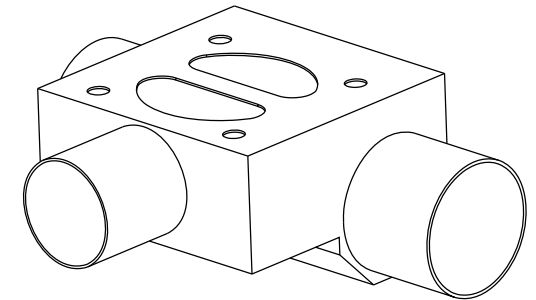
DN50 MAINLINE ONLY



DN80 TO DN100  
MAINLINE ONLY



ORIENTATION AS  
PER P&ID DIAGRAM  
FOR OPTIMUM  
DRAINABILITY.



DN65 MAINLINE ONLY

MAINLINE SIZE	A	B	C	D	$\phi E$	$\phi F$	G	BODY WEIGHT
mm	mm	mm	mm	mm	mm	mm	mm	Kgs
DN50	50.8	50.8	30.8	43.0	51.0	48.6	27.5	4.3
DN65	50.8	50.8	36.7	50.0	63.5	60.3	27.5	5.4
DN80	50.8	50.8	42.5	55.3	76.1	72.9	33.2	5.2
DN100	101.6	50.8	55.3	66.0	101.6	97.6	27.5	7.1

The information on this sheet is Private and Confidential and is the property of Crane Process Flow Technologies Limited and must not be published directly or indirectly in any manner whatsoever without the written permission of the Company and must not be used in any way detrimental to their interests.  
© Crane Process Flow Technologies

**CRANE** Process Flow Technologies  
A Crane Co. Company

**Saunders**  
The Science Inside

Title  
SCHEDULE OF LEADING DIMENSIONS FOR DN50  
WEIR 'T' BODY WITH BUTT WELD SMS 3008 ENDS

Drawn JRD	Date 27.02.12	UNCONTROLLED IN HARD COPY FORMAT
Checked RND	Date 27.02.12	
First Angle Projection Method E	DO NOT SCALE	Drawing No. WEB-136
		Issue. 1