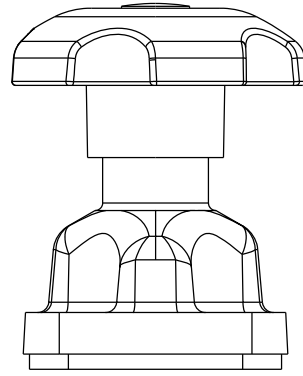
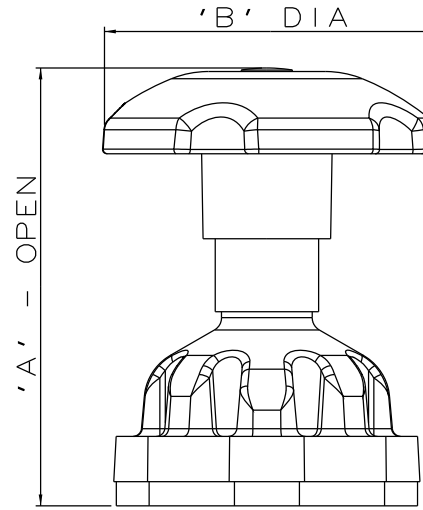


DN15 & DN20 ONLY

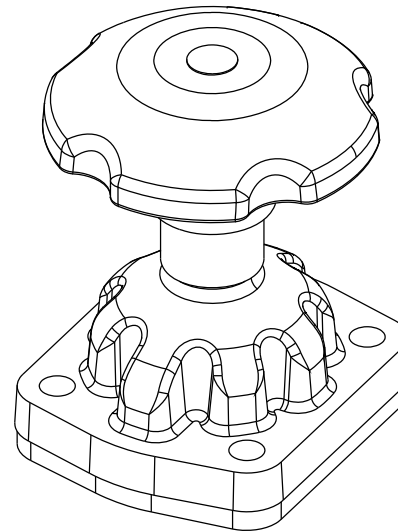
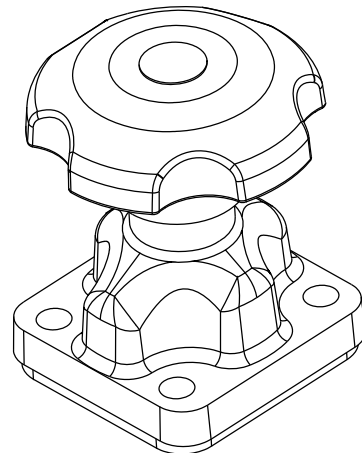
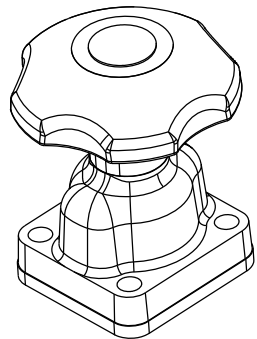


DN25 ONLY



DN40 & DN50 ONLY

| VALVE SIZE | A | | B | | WEIGHT KGS |
|------------|-----|------|-----|------|---------------|
| | mm | inch | mm | inch | |
| DN15 | 75 | 2.95 | 62 | 2.44 | 0.2 |
| DN20 | 75 | 2.95 | 62 | 2.44 | 0.2 |
| DN25 | 95 | 3.74 | 80 | 3.15 | 0.3 |
| DN40 | 136 | 5.35 | 120 | 4.72 | 0.7 |
| DN50 | 151 | 5.95 | 120 | 4.72 | 1.0 |



The information on this sheet is Private and Confidential and is the property of Crane Process Flow Technologies Limited and must not be published directly or indirectly in any manner whatsoever without the written permission of the Company and must not be used in any way detrimental to their interests.
 © Crane Process Flow Technologies

CRANE Process Flow Technologies
 A Crane Co. Company

Saunders
 The Science Inside

Title
 LEADING DIMENSIONS FOR PARA BONNET
 ASSEMBLY.
 CODE : RUBBER - H59 PTFE - H60
 SIZES DN15 - DN50

| | | |
|-------------|---------------|-------------------------------------|
| Drawn NAW | Date 16.02.12 | UNCONTROLLED IN HARD COPY FORMAT |
| Checked JRD | Date 16.02.12 | |

| | | | | |
|---------------------------------------|--|-----------------|------------------------|-------------|
| First Angle Projection Method E | | DO NOT SCALE | Drawing No. WEB-129 | Issue. 1 |
|---------------------------------------|--|-----------------|------------------------|-------------|