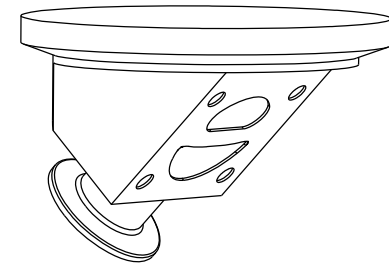
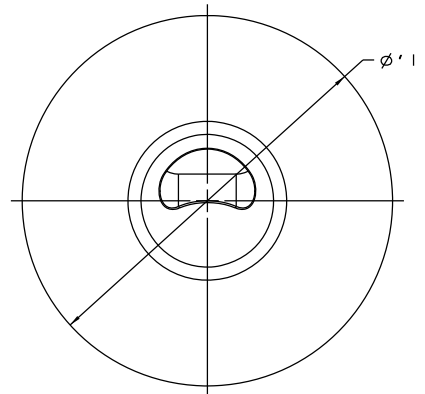
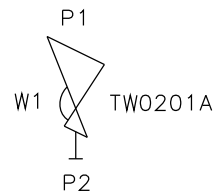


DN80 TANKS ONLY



DN15 TO DN50 TANKS ONLY

BODY SIZE mm	A mm	B mm	ØC mm	ØD mm	E mm	F mm	G mm	H mm	I mm	BODY WEIGHT KGS
DN15 (DN10 END)	50.0	25.0	34.0	10.0	15.0	34.3	64.9	8.5	140.0	0.6
DN15	50.0	25.0	34.0	16.0	15.0	36.4	65.0	11.5	140.0	1.4
DN20	54.0	25.0	34.0	20.0	15.0	37.8	67.7	13.5	140.0	1.7
DN25	60.0	25.0	50.4	26.0	14.5	46.8	76.0	16.5	140.0	1.8
DN40 (DN32 END)	71.5	25.0	50.4	32.0	23.1	44.1	131.4	19.5	200.0	7.4
DN40	71.5	25.0	50.4	38.0	23.1	46.2	129.3	22.5	200.0	7.4
DN50	80.9	25.0	63.9	50.0	22.0	58.3	126.8	30.0	200.0	9.8
DN80 (DN65 END)	130.0	50.0	90.9	66.0	22.7	87.6	176.1	38.0	270.0	23.9
DN80	130.0	50.0	105.9	81.0	22.7	92.9	170.8	45.5	270.0	23.6



ORIENTATION AS PER P&ID DIAGRAM FOR OPTIMUM DRAINABILITY.

The information on this sheet is Private and Confidential and is the property of Crane Process Flow Technologies Limited and must not be published directly or indirectly in any manner whatsoever without the written permission of the Company and must not be used in any way detrimental to their interests.
© Crane Process Flow Technologies

CRANE	Process Flow Technologies A Crane Co. Company	Saunders The Science Inside
Title LEADING DIMENSIONS FOR MACHINED FROM SOLID TANK BOTTOM VALVES WITH HYGIENIC CLAMP END WITH DIN 11850 S2/S1 BORE		
Drawn RI	Date 07.12.11	UNCONTROLLED IN HARD COPY FORMAT
Checked RND	Date 05.04.12	
First Angle Projection Method E	DO NOT SCALE	Drawing No. WEB-114
		Issue. 3