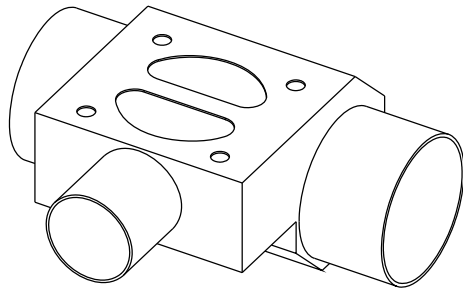
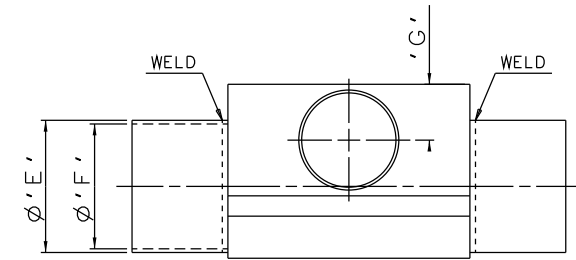
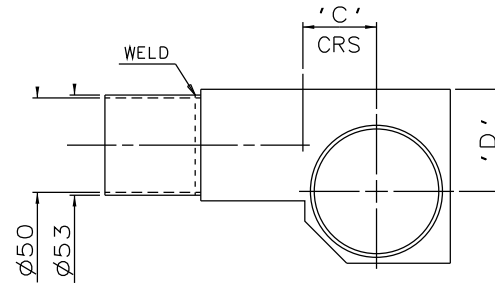
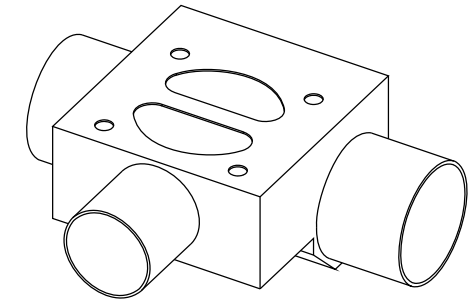
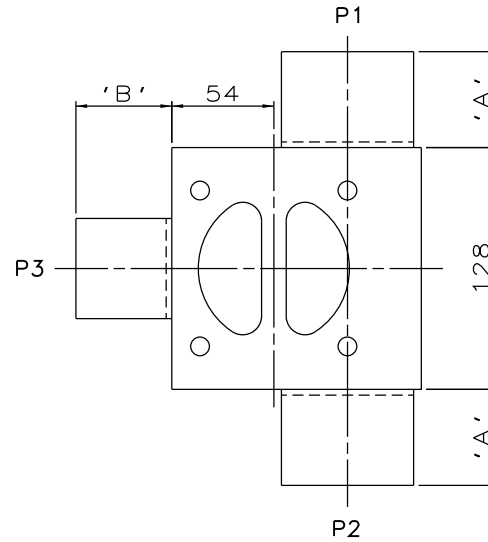


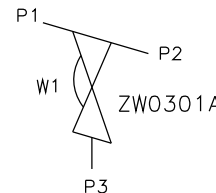
DN50 MAINLINE ONLY



DN80 TO DN100
MAINLINE ONLY



DN65 MAINLINE ONLY



ORIENTATION AS
PER P&ID DIAGRAM
FOR OPTIMUM
DRAINABILITY.

MAINLINE SIZE	A	B	C	D	øE	øF	G	BODY WEIGHT
mm	mm	mm	mm	mm	mm	mm	mm	Kgs
DN50 DIN 11850 S2	50.8	50.8	31.5	44.0	53.0	50.0	28.5	4.4
DN65 DIN 11850 S1	50.8	50.8	39.0	54.0	70.0	66.0	29.5	5.7
DN80 DIN 11850 S1	50.8	50.8	47.0	59.0	85.0	81.0	28.5	5.5
DN100 DIN 11850 S1	101.6	50.8	56.0	67.0	104.0	100.0	29.5	6.1

The information on this sheet is Private and Confidential and is the property of Crane Process Flow Technologies Limited and must not be published directly or indirectly in any manner whatsoever without the written permission of the Company and must not be used in any way detrimental to their interests.
© Crane Process Flow Technologies

CRANE Process Flow Technologies
A Crane Co. Company

Saunders
The Science Inside

Title
SCHEDULE OF LEADING DIMENSIONS FOR DN50
WEIR 'T' BODY COMPLETE WITH :
MAINLINE : DIN 11850 S2/S1 BUTT WELD ENDS
BRANCH : DN50 DIN 11850 S2 BUTT WELD END

Drawn R1 Date 11.11.11 UNCONTROLLED IN
Checked RND Date 02.04.12 HARD COPY FORMAT

First Angle Projection Method E DO NOT SCALE Drawing No. WEB-102 Issue. 2