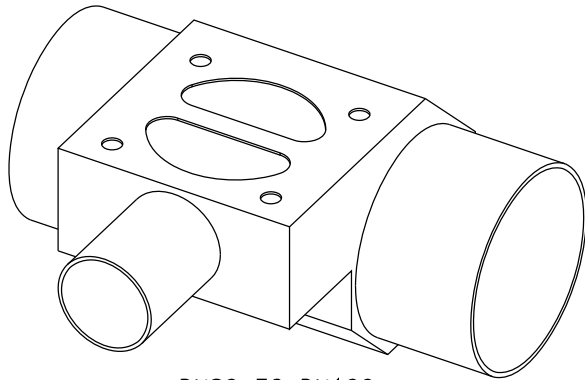
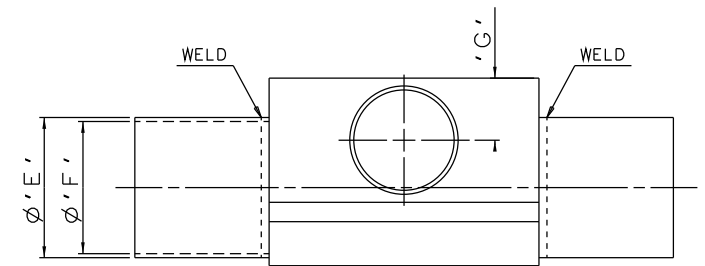
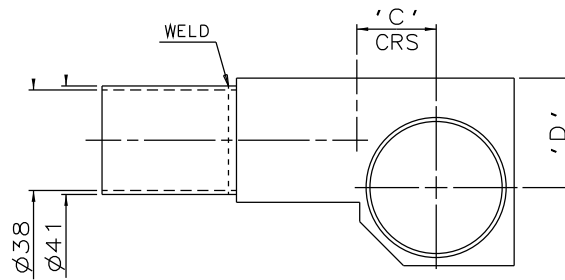
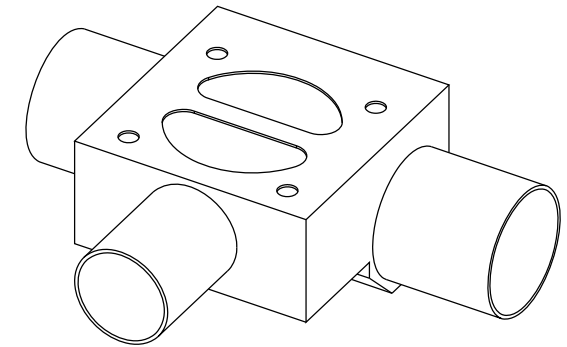
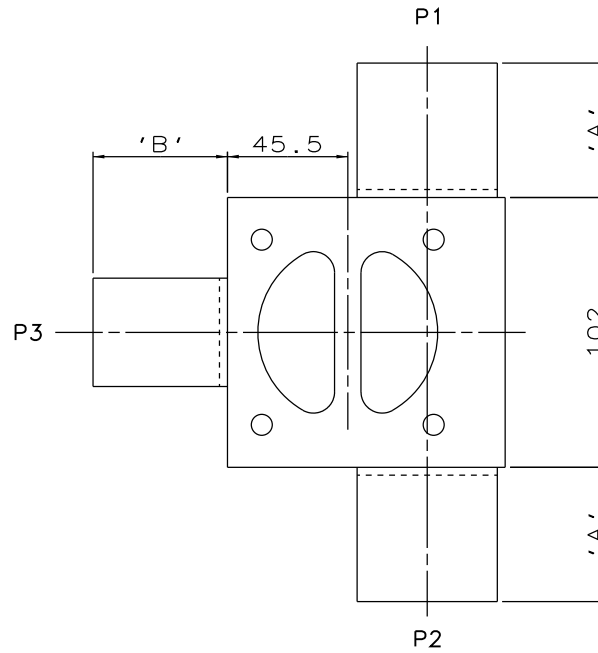


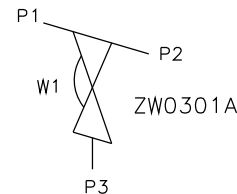
DN40 MAINLINE ONLY



DN80 TO DN100  
MAINLINE ONLY



DN50 TO DN65 MAINLINE



ORIENTATION AS  
PER P&ID DIAGRAM  
FOR OPTIMUM  
DRAINABILITY.

MAINLINE SIZE mm	A mm	B mm	C mm	D mm	øE mm	øF mm	G mm	BODY WEIGHT Kgs
DN40 DIN 11850 S2	50.8	50.8	24.0	35.0	41.0	38.0	23.5	3.0
DN50 DIN 11850 S2	50.8	50.8	30.0	41.4	53.0	50.0	23.5	2.9
DN65 DIN 11850 S1	50.8	50.8	38.0	49.5	70.0	66.0	23.5	3.7
DN80 DIN 11850 S1	50.8	50.8	45.5	55.5	85.0	81.0	23.5	3.5
DN100 DIN 11850 S1	101.6	50.8	55.0	62.0	104.0	100.0	23.5	4.5

The information on this sheet is Private and Confidential and is the property of Crane Process Flow Technologies Limited and must not be published directly or indirectly in any manner whatsoever without the written permission of the Company and must not be used in any way detrimental to their interests.  
© Crane Process Flow Technologies

**CRANE** Process Flow Technologies  
A Crane Co. Company

**Saunders**  
The Science Inside

Title  
SCHEDULE OF LEADING DIMENSIONS FOR DN40  
WEIR 'T' BODY COMPLETE WITH :  
MAINLINE : DIN 11850 S2/S1 BUTT WELD ENDS  
BRANCH : DN40 DIN 11850 S2 BUTT WELD END

Drawn RI	Date 11.11.11	UNCONTROLLED IN HARD COPY FORMAT	
Checked RND	Date 02.04.12		
First Angle Projection Method E	DO NOT SCALE	Drawing No. WEB-101	Issue. 2