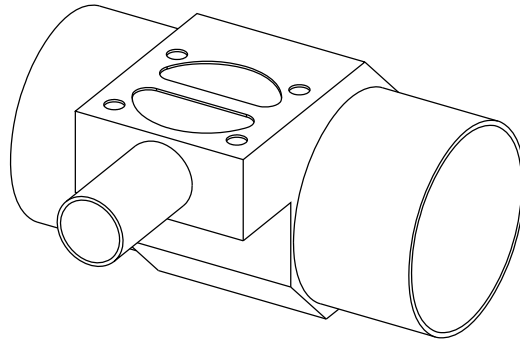
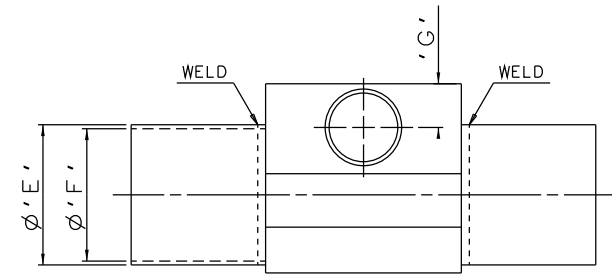
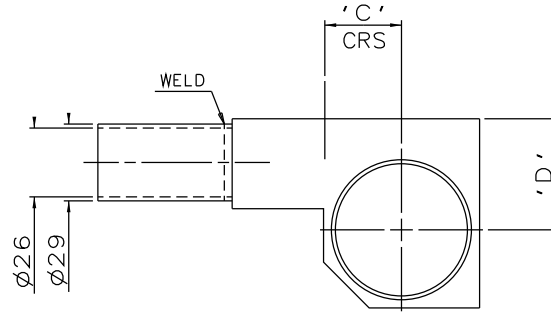
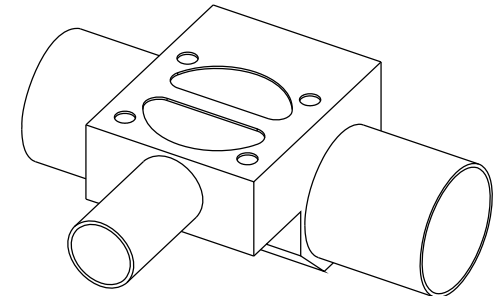
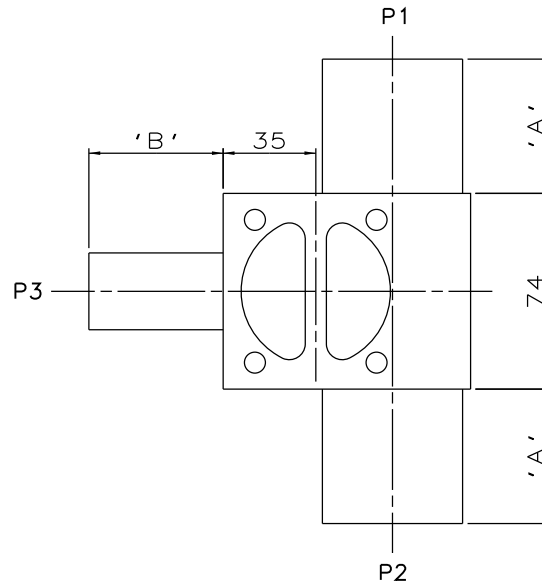


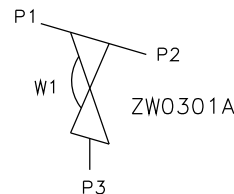
DN25 MAINLINE ONLY



DN80 TO DN100
MAINLINE ONLY



DN40 TO DN65
MAINLINE ONLY



ORIENTATION AS
PER P&ID DIAGRAM
FOR OPTIMUM
DRAINABILITY.

MAINLINE SIZE mm	A mm	B mm	C mm	D mm	ØE mm	ØF mm	G mm	BODY WEIGHT Kgs
DN25 DIN 11850 S2	50.8	50.8	17.0	29.3	29.0	26.0	16.5	1.4
DN32 DIN 11850 S2	50.8	50.8	20.0	32.8	35.0	32.0	17.5	1.4
DN40 DIN 11850 S2	50.8	50.8	23.0	36.0	41.0	38.0	15.7	1.5
DN50 DIN 11850 S2	50.8	50.8	29.0	42.0	53.0	50.0	16.5	1.9
DN65 DIN 11850 S1	50.8	50.8	37.0	50.5	70.0	66.0	15.7	2.5
DN80 DIN 11850 S1	50.8	50.8	44.5	53.0	85.0	81.0	17.5	2.1
DN100 DIN 11850 S1	101.6	50.8	54.0	58.0	104.0	100.0	17.5	3.0

The information on this sheet is Private and Confidential and is the property of Crane Process Flow Technologies Limited and must not be published directly or indirectly in any manner whatsoever without the written permission of the Company and must not be used in any way detrimental to their interests.
© Crane Process Flow Technologies

CRANE Process Flow Technologies
A Crane Co. Company

Saunders
The Science Inside

Title SCHEDULE OF LEADING DIMENSIONS FOR DN25 WEIR 'T' BODY COMPLETE WITH : MAINLINE : DIN 11850 S2/S1 BUTT WELD ENDS BRANCH : DN25 DIN 11850 S2 BUTT WELD END			
Drawn RI	Date 11.11.11	UNCONTROLLED IN HARD COPY FORMAT	
Checked RND	Date 02.04.12		
First Angle Projection Method E		DO NOT SCALE	Drawing No. WEB-100
			Issue. 2