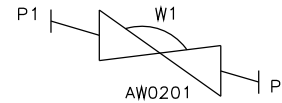
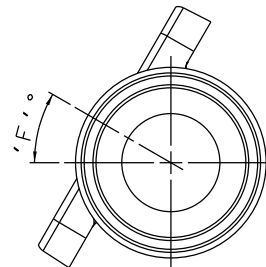


VALVE SIZE mm	A mm	B mm	C mm	ØD mm	ØE mm	F DEGREES	BODY WEIGHT KGS
DN8 (DN10 ENDS) DIN 11850 S2	78.0	21.5	9.6	34.0	10.0	20	0.2
DN15 (DN10 ENDS) DIN 11850 S2	108.0	30.5	13.0	34.0	10.0	31	0.3
DN15 DIN 11850 S2	108.0	30.5	13.0	34.0	16.0	25	0.3
DN20 DIN 11850 S2	117.0	28.5	16.0	34.0	20.0	26	0.4
DN25 DIN 11850 S2	127.0	28.5	19.5	50.4	26.0	17	0.8
DN40 (DN32 ENDS) DIN 11850 S2	159.0	31.5	28.0	50.4	32.0	27	1.6
DN40 DIN 11850 S2	159.0	31.5	28.0	50.4	38.0	22	1.5
DN50 DIN 11850 S2	190.0	40.9	33.5	63.9	50.0	20	2.1
DN65 DIN 11850 S1	217.0	42.0	40.5	90.9	66.0	18	3.5
DN80 DIN 11850 S1	254.0	48.0	48.0	105.9	81.0	21	5.4



SELF DRAIN
POSITION IN
HORIZONTAL
ORIENTATION

DRAIN ANGLE TOLERANCE = +/- 2°

The information on this sheet is Private and Confidential and is the property of Crane Process Flow Technologies Limited and must not be published directly or indirectly in any manner whatsoever without the written permission of the Company and must not be used in any way detrimental to their interests.
© Crane Process Flow Technologies

CRANE Process Flow Technologies
A Crane Co. Company

Saunders
The Science Inside

Title
SCHEDULE OF LEADING DIMENSIONS FOR 2-WAY
MKIV FORGED BODY WITH HYGIENIC CLAMP ENDS
WITH DIN 11850 S2/S1 BORE

Drawn R1	Date 10.11.11	UNCONTROLLED IN HARD COPY FORMAT
Checked RND	Date 05.10.12	
First Angle Projection Method E	DO NOT SCALE	Drawing No. WEB-095
		Issue. 3