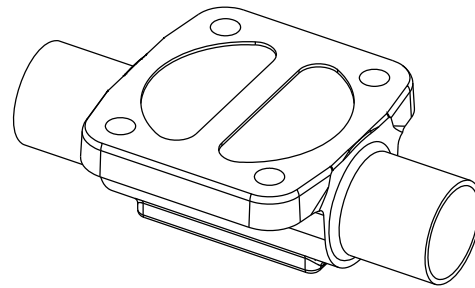
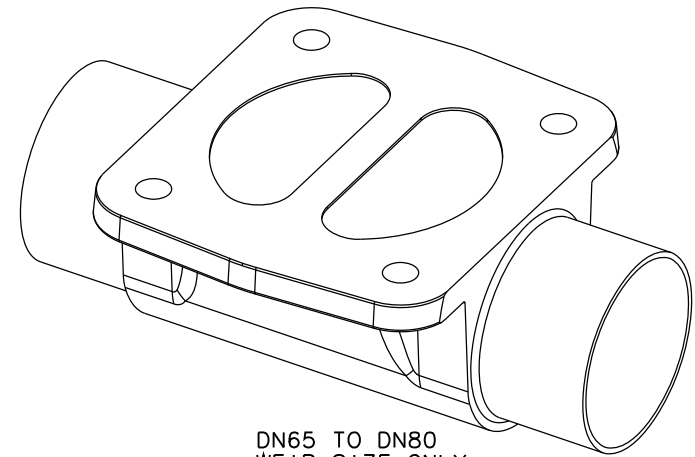


DN8 WEIR
SIZE ONLY

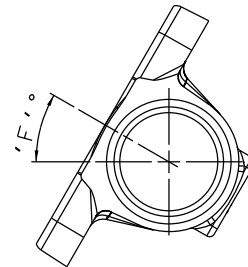


DN15 TO DN50
WEIR SIZE ONLY

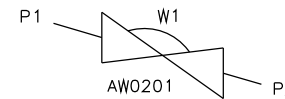


DN65 TO DN80
WEIR SIZE ONLY

VALVE SIZE	A	B	C	ØD	ØE	F	BODY WEIGHT
mm	mm	mm	mm	mm	mm	DEGREES	KGS
DN8 (DN10 ENDS) DIN 11850 S2	78.0	21.5	9.6	13.0	10.0	20	0.1
DN15 (DN10 ENDS) DIN 11850 S2	108.0	30.5	13.0	13.0	10.0	31	0.3
DN15 DIN 11850 S2	108.0	30.5	13.0	19.0	16.0	25	0.3
DN20 DIN 11850 S2	117.0	28.5	16.0	23.0	20.0	26	0.4
DN25 DIN 11850 S2	127.0	28.5	19.5	29.0	26.0	17	0.6
DN40 (DN32 ENDS) DIN 11850 S2	159.0	31.5	28.0	35.0	32.0	27	1.6
DN40 DIN 11850 S2	159.0	31.5	28.0	41.0	38.0	22	1.4
DN50 DIN 11850 S2	190.0	40.9	33.5	53.0	50.0	20	2.0
DN65 DIN 11850 S1	217.0	42.0	40.5	70.0	66.0	18	3.4
DN80 DIN 11850 S1	254.0	48.0	48.0	85.0	81.0	21	5.4



DRAIN ANGLE TOLERANCE = $\pm 2^\circ$



SELF DRAIN
POSITION IN
HORIZONTAL
ORIENTATION

The information on this sheet is Private and Confidential and is the property of Crane Process Flow Technologies Limited and must not be published directly or indirectly in any manner whatsoever without the written permission of the Company and must not be used in any way detrimental to their interests.
© Crane Process Flow Technologies

CRANE Process Flow Technologies
A Crane Co. Company

Saunders
The Science Inside

Title
SCHEDULE OF LEADING DIMENSIONS FOR 2-WAY MKIV
FORGED BODY WITH DIN 11850 S2/S1 BUTT WELD ENDS.

Drawn R1 Date 10.11.11

UNCONTROLLED IN
HARD COPY FORMAT

Checked RND Date 05.10.12

First Angle
Projection
Method E

Drawing No.
WEB-094 Issue.
2