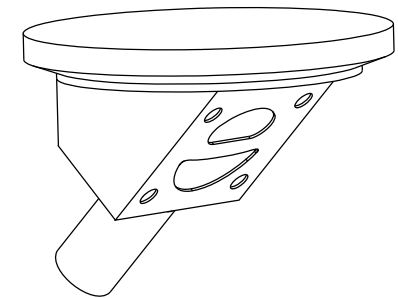
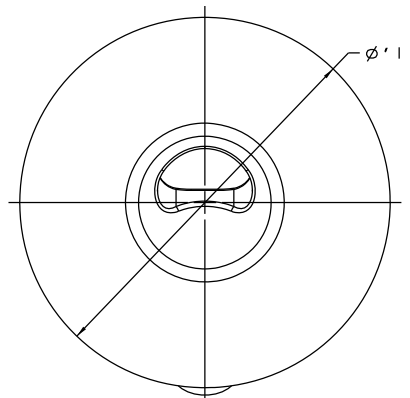


DN65/2.50 TO DN80/3.00
TANKS ONLY



DN15/0.50 TO DN50/2.00
TANKS ONLY

The information on this sheet is Private and Confidential and is the property of Crane Process Flow Technologies Limited and must not be published directly or indirectly in any manner whatsoever without the written permission of the Company and must not be used in any way detrimental to their interests.
© Crane Process Flow Technologies

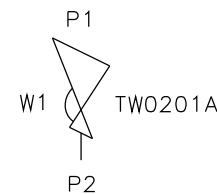
CRANE Process Flow Technologies
A Crane Co. Company

Saunders
The Science Inside

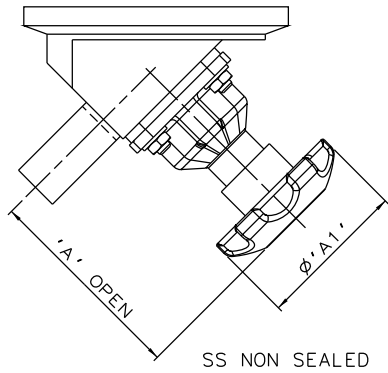
Title
LEADING DIMENSIONS FOR MACHINED FROM SOLID
TANK BOTTOM VALVES WITH BUTT WELD OD TUBE END

Drawn JRD	Date 07.10.11	UNCONTROLLED IN HARD COPY FORMAT	
Checked RND	Date 12.10.17		
First Angle Projection Method E	DO NOT SCALE	Drawing No. WEB-071	Issue. 3

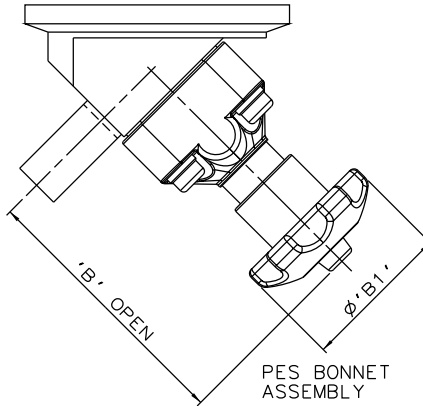
BODY SIZE		A		B		ØC		ØD		E		F		G		H		I		BODY WEIGHT
mm	inch	mm	inch	mm	inch	mm	inch	mm	inch	mm	inch	mm	inch	mm	inch	mm	inch	mm	inch	KGS
DN15	0.50	75.8	2.98	50.8	2.00	12.7	0.50	9.4	0.37	15.0	0.59	52.0	2.05	85.0	3.35	8.4	0.33	140.0	5.51	1.4
DN20	0.75	79.8	3.14	50.8	2.00	19.05	0.75	15.75	0.62	15.0	0.59	55.0	2.17	87.0	3.43	11.5	0.45	140.0	5.51	1.7
DN25	1.00	85.8	3.38	50.8	2.00	25.4	1.00	22.1	0.87	14.5	0.57	64.0	2.52	95.0	3.74	14.7	0.58	140.0	5.51	2.2
DN40	1.50	97.3	3.83	50.8	2.00	38.1	1.50	34.8	1.37	23.1	0.91	63.0	2.48	149.0	5.87	21.0	0.87	200.0	7.87	7.4
DN50	2.00	104.5	4.11	50.8	2.00	50.8	2.00	47.5	1.87	22.0	0.62	74.0	2.91	141.0	5.55	27.4	1.08	200.0	7.87	10.3
DN65	2.50	117.3	4.62	50.8	2.00	63.5	2.50	60.2	2.37	23.0	0.91	81.3	3.20	135.0	5.31	33.8	1.33	250.0	9.84	11.8
DN80	3.00	130.8	5.15	50.8	2.00	76.2	3.00	72.9	2.87	22.7	0.89	90.0	3.54	174.0	6.85	41.1	1.58	270.0	10.63	24.0



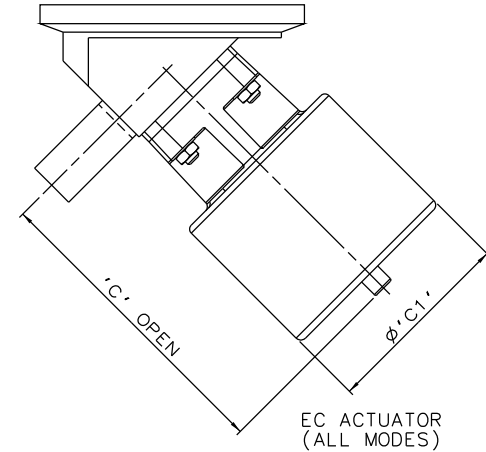
ORIENTATION AS PER P&ID DIAGRAM
FOR OPTIMUM DRAINABILITY.



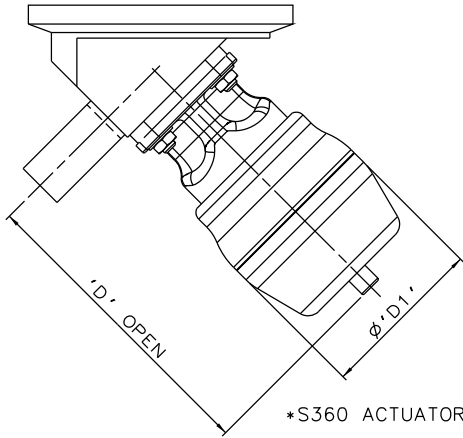
SS NON SEALED



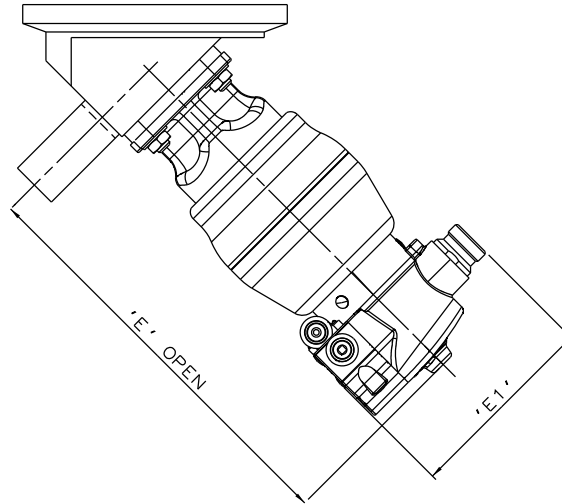
PES BONNET ASSEMBLY



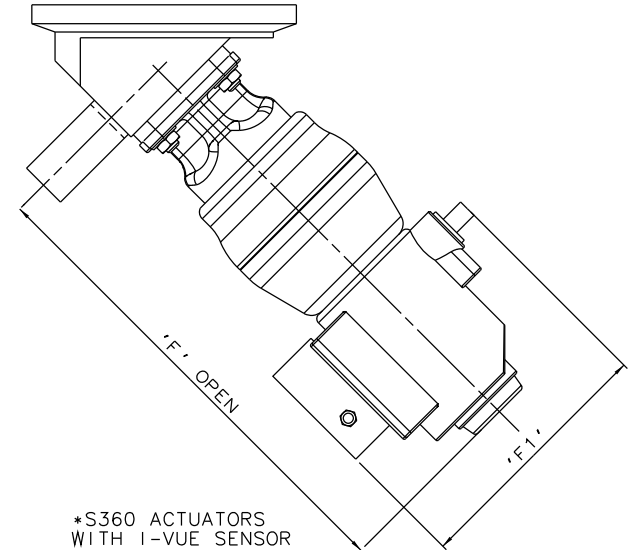
EC ACTUATOR (ALL MODES)



*S360 ACTUATORS



*S360 ACTUATORS WITH M-VUE SENSOR



*S360 ACTUATORS WITH I-VUE SENSOR

* DIMENSIONS SHOW MAXIMUM ENVELOPE FOR ALL MODES

VALVE SIZE		A		A1		B		B1		C		C1		D		D1		E		E1		F		F1	
mm	inch	mm	inch	mm	inch	mm	inch	mm	inch	mm	inch	mm	inch	mm	inch	mm	inch	mm	inch	mm	inch	mm	inch	mm	inch
DN15	0.50	83.4	3.28	62.0	2.44	106.4	4.19	62.0	2.44	110.4	4.35	70.0	2.75	134.4	5.29	67.5	2.66	194.7	7.67	103.8	4.09	229.4	9.03	136.0	5.35
DN20	0.75	86.5	3.41	62.0	2.44	112.5	4.43	62.0	2.44	155.5	6.12	103.0	4.05	162.5	6.40	98.0	3.87	223.5	8.80	103.8	4.09	258.5	10.18	136.0	5.35
DN25	1.00	108.7	4.28	80.0	3.15	142.7	5.62	80.0	3.15	162.7	6.41	103.0	4.05	170.7	6.72	98.0	3.87	231.7	9.12	103.8	4.09	268.1	10.56	136.0	5.35
DN40	1.50	157.0	6.18	120.0	4.72	198.0	7.80	140.0	5.51	224.0	8.82	155.0	6.10	223.0	8.78	123.0	4.84	274.1	10.79	103.8	4.09	310.1	12.21	136.0	5.35
DN50	2.00	179.4	7.06	120.0	4.72	208.4	8.20	140.0	5.51	243.4	9.58	155.0	6.10	266.4	10.49	150.0	5.92	314.4	12.38	103.8	4.09	350.4	13.80	136.0	5.35
DN65	2.50	226.8	8.93	170.0	6.69	222.8	8.77	140.0	5.51	N/A	N/A	N/A	N/A	327.8	12.91	186.0	7.32	N/A	N/A	N/A	N/A	407.8	16.06	136.0	5.35
DN80	3.00	252.1	9.93	230.0	9.06	292.1	11.5	250.0	9.84	N/A	N/A	N/A	N/A	400.1	15.75	236.0	9.29	N/A	N/A	N/A	N/A	475.1	18.7	136.0	5.35

The information on this sheet is Private and Confidential and is the property of Crane Process Flow Technologies Limited and must not be published directly or indirectly in any manner whatsoever without the written permission of the Company and must not be used in any way detrimental to their interests.
 © Crane Process Flow Technologies

CRANE Process Flow Technologies
A Crane Co. Company

Saunders
The Science Inside

Title
LEADING DIMENSIONS FOR MACHINED FROM SOLID TANK BOTTOM VALVES WITH BUTT WELD OD TUBE END FITTED WITH TOPWORKS OPTIONS

Drawn R1 Date 29.06.16 UNCONTROLLED IN HARD COPY FORMAT
 Checked RND Date 29.06.16
 First Angle Projection Method E DO NOT SCALE Drawing No. WEB-071-ASSY Issue. 1