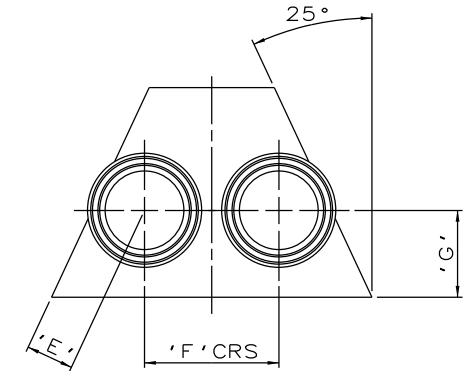
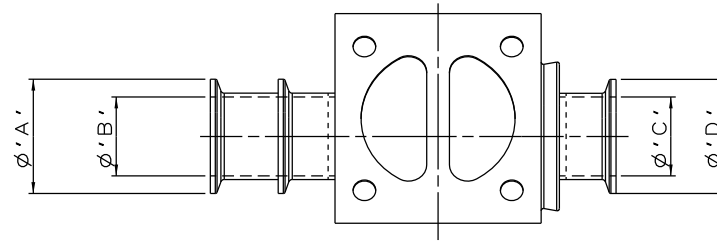
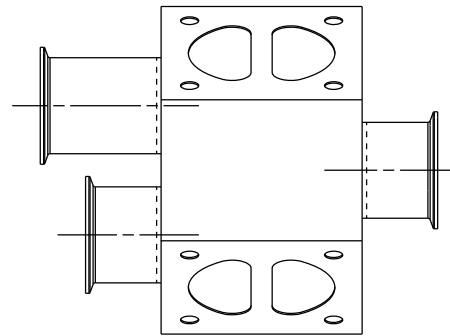


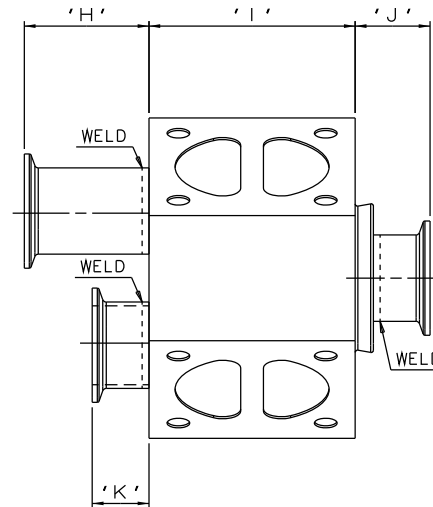
DN15/0.50 TO DN25/1.00
SIZES ONLY



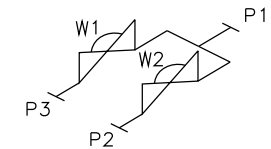
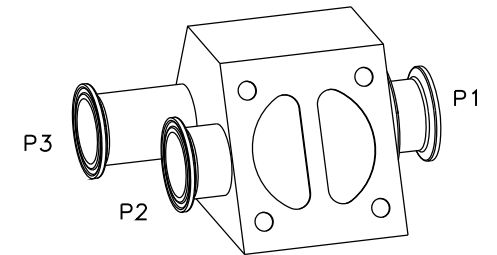
DN8/0.25 AND DN40/1.50 TO DN80/3.00
SIZES ONLY



DN65/2.50 TO DN80/3.00
SIZES ONLY



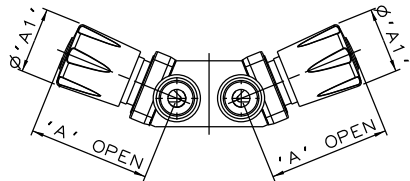
DN8/0.25 TO DN50/2.00
SIZES ONLY



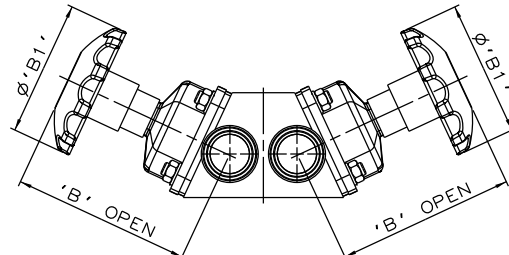
The information on this sheet is Private and Confidential and is the property of Crane Process Flow Technologies Limited and must not be published directly or indirectly in any manner whatsoever without the written permission of the Company and must not be used in any way detrimental to their interests.
© Crane Process Flow Technologies

VALVE SIZE		ϕA		ϕB		ϕC		ϕD		E		F		G		H		I		J		K		BODY WEIGHT
mm	inch	mm	inch	mm	inch	mm	inch	mm	inch	mm	inch	mm	inch	mm	inch	mm	inch	mm	inch	mm	inch	mm	inch	Kgs
DN8 (DN15 END)	0.25 (0.50 END)	25.0	0.98	9.4	0.37	9.4	0.37	25.0	0.98	8.4	0.33	33.9	1.33	18.9	0.74	55.0	2.16	36.0	1.42	33.0	1.30	25.0	0.98	0.6
DN15	0.50	25.0	0.98	9.4	0.37	9.4	0.37	25.0	0.98	8.4	0.33	33.9	1.33	18.7	0.74	55.0	2.16	50.0	1.97	33.0	1.30	25.0	0.98	0.9
DN20	0.75	25.0	0.98	15.75	0.62	15.75	0.62	25.0	0.98	11.5	0.45	37.0	1.46	25.7	1.01	55.0	2.16	58.0	2.28	33.0	1.30	25.0	0.98	1.47
DN25	1.00	50.4	1.98	22.1	0.87	22.1	0.87	50.4	1.98	14.7	0.58	52.9	2.08	32.8	1.29	55.0	2.16	70.0	2.76	33.0	1.30	25.0	0.98	2.94
DN40	1.50	50.4	1.98	34.8	1.37	34.8	1.37	50.4	1.98	21.1	0.83	59.2	2.33	38.3	1.51	55.0	2.16	91.0	3.58	33.0	1.30	25.0	0.98	5.18
DN50	2.00	63.9	2.52	47.5	1.87	47.5	1.87	63.9	2.52	27.4	1.08	72.4	2.85	48.9	1.93	55.0	2.16	108.0	4.25	37.0	1.46	25.0	0.98	9.34
DN65	2.50	77.4	3.05	60.2	2.37	60.2	2.37	77.4	3.05	34.8	1.37	85.5	3.37	58.6	2.31	80.0	3.15	133.0	5.24	50.0	1.97	50.0	1.97	15.63
DN80	3.00	90.9	3.58	72.9	2.87	72.9	2.87	90.9	3.58	41.1	1.62	125.3	4.93	70.9	2.79	80.0	3.15	160.0	6.30	50.0	1.97	50.0	1.97	31.28

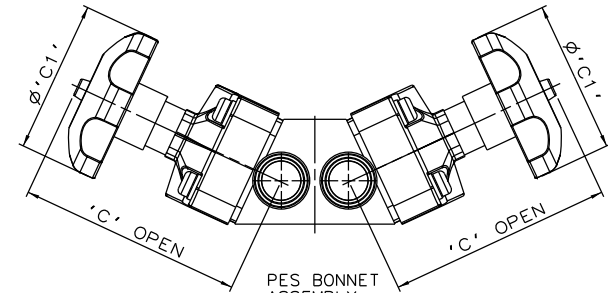
CRANE Process Flow Technologies A Crane Co. Company	Saunders The Science Inside	
Title SCHEDULE OF LEADING DIMENSIONS FOR DN8/0.25 TO DN80/3.00 2-WAY DIVERTER VALVES WITH HYGIENIC CLAMP ENDS		
Drawn RI	Date 11.10.11	UNCONTROLLED IN HARD COPY FORMAT
Checked JRD	Date 19.02.14	
First Angle Projection Method E	DO NOT SCALE	Drawing No. WEB-068
		Issue. 4



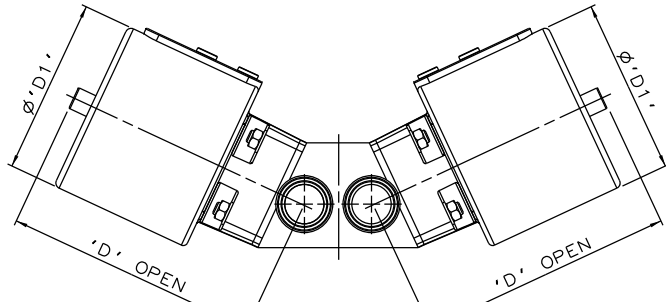
PURE PERFORMANCE BONNET ASSEMBLY



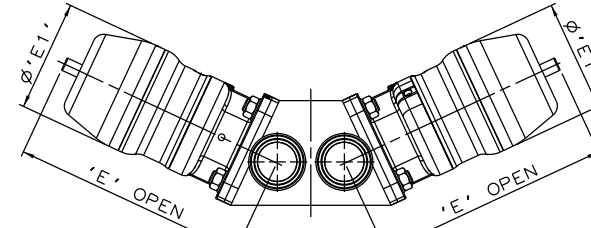
SS NON SEALED BONNET ASSEMBLY



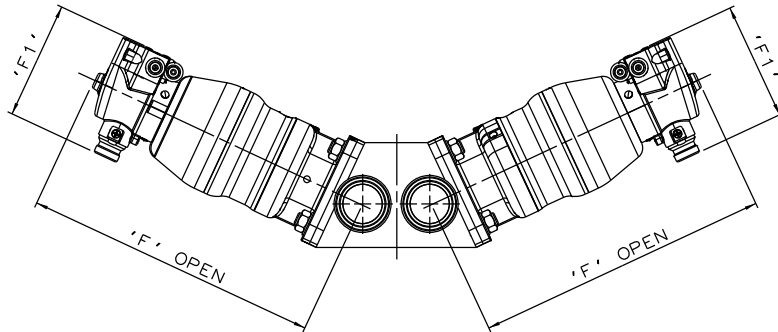
PES BONNET ASSEMBLY



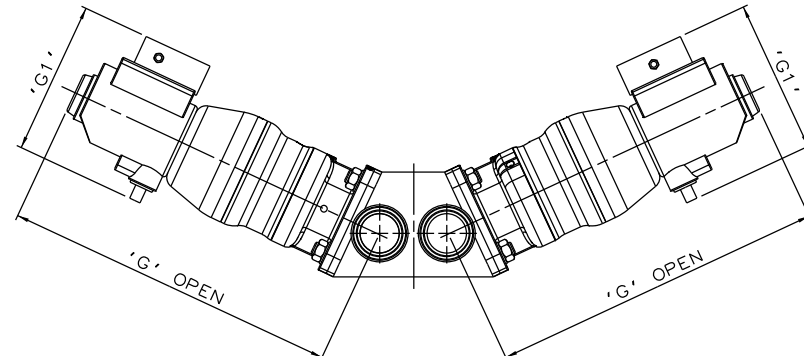
EC ACTUATOR (ALL MODES)



*S360 ACTUATOR



*S360 ACTUATOR WITH M-VUE SENSOR



*S360 ACTUATOR WITH I-VUE SENSOR

The information on this sheet is Private and Confidential and is the property of Crane Process Flow Technologies Limited and must not be published directly or indirectly in any manner whatsoever without the written permission of the Company and must not be used in any way detrimental to their interests.
 © Crane Process Flow Technologies

CRANE Process Flow Technologies
 A Crane Co. Company

Saunders
 The Science Inside

Title
 SCHEDULE OF LEADING DIMENSIONS FOR DN8/0.25 TO DN80/3.00 2-WAY DIVERTER VALVES WITH HYGIENIC CLAMP ENDS FITTED WITH TOPWORKS OPTIONS

Drawn R1 Date 30.06.16 UNCONTROLLED IN HARD COPY FORMAT
 Checked RND Date 30.06.16

First Angle Projection DO NOT SCALE Drawing No. WEB-068-ASSY Issue. 1

* DIMENSIONS SHOW MAXIMUM ENVELOPE FOR ALL MODES

VALVE SIZE	A		A1		B		B1		C		C1		D		D1		E		E1		F		F1		G		G1		
	mm	inch	mm	inch	mm	inch	mm	inch	mm	inch	mm	inch	mm	inch	mm	inch	mm	inch	mm	inch	mm	inch	mm	inch	mm	inch	mm	inch	
DN8 (DN15 END)	0.25 (0.50)	64.8	2.55	34.0	1.34	N/A	N/A	N/A	N/A	N/A	N/A	N/A	N/A	N/A	N/A	N/A	N/A	N/A	N/A	N/A	N/A	N/A	N/A	N/A	N/A	N/A	N/A	N/A	N/A
DN15	0.50	N/A	N/A	N/A	N/A	83.4	3.28	62.0	2.44	106.4	4.19	62.0	2.44	110.4	4.35	70.0	2.75	134.4	5.29	67.5	2.66	194.7	7.67	103.8	4.09	230.4	9.07	136.0	5.35
DN20	0.75	N/A	N/A	N/A	N/A	86.5	3.41	62.0	2.44	112.5	4.43	62.0	2.44	155.5	6.12	103.0	4.05	162.5	6.40	98.0	3.87	223.5	8.80	103.8	4.09	258.5	10.18	136.0	5.35
DN25	1.00	N/A	N/A	N/A	N/A	108.7	4.28	80.0	3.15	142.7	5.62	80.0	3.15	162.7	6.41	103.0	4.05	170.7	6.72	98.0	3.87	231.7	9.12	103.8	4.09	267.7	10.54	136.0	5.35
DN40	1.50	N/A	N/A	N/A	N/A	157.1	6.19	120.0	4.72	198.1	7.80	140.0	5.51	224.1	8.82	155.0	6.10	223.1	8.78	123.0	4.84	274.1	10.79	103.8	4.09	310.1	12.21	136.0	5.35
DN50	2.00	N/A	N/A	N/A	N/A	179.4	7.06	120.0	4.72	208.4	8.20	140.0	5.51	243.4	9.58	155.0	6.10	266.4	10.49	150.0	5.92	314.4	12.38	103.8	4.09	350.4	13.80	136.0	5.35
DN65	2.50	N/A	N/A	N/A	N/A	227.8	8.97	170.0	6.69	220.8	8.69	140.0	5.51	N/A	N/A	N/A	N/A	328.8	12.94	186.0	7.32	N/A	N/A	N/A	N/A	408.8	16.09	136.0	5.35
DN80	3.00	N/A	N/A	N/A	N/A	252.1	9.93	230.0	9.06	292.1	11.5	250.0	9.84	N/A	N/A	N/A	N/A	400.1	15.75	236.0	9.29	N/A	N/A	N/A	N/A	473.1	18.63	136.0	5.35