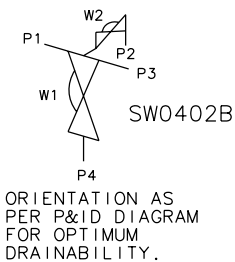
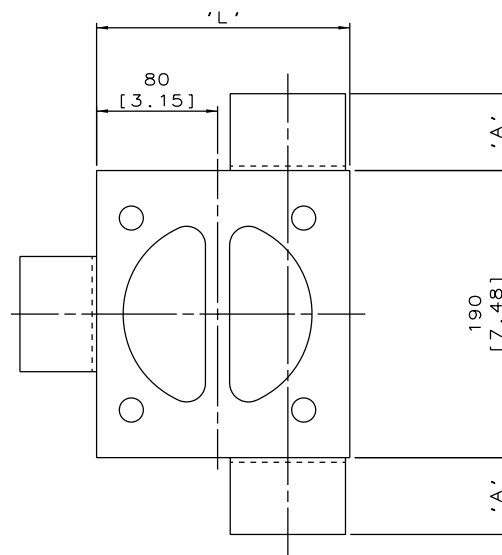
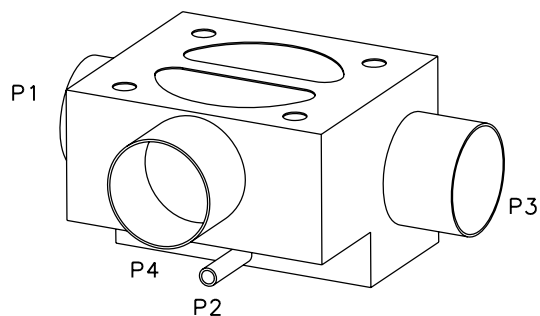


DN100/4.00  
MAINLINE ONLY



The information on this sheet is Private and Confidential and is the property of Crane Process Flow Technologies Limited and must not be published directly or indirectly in any manner whatsoever without the written permission of the Company and must not be used in any way detrimental to their interests.  
© Crane Process Flow Technologies

**CRANE** Process Flow Technologies  
A Crane Co. Company

**Saunders**  
The Science Inside

Title  
SCHEDULE OF LEADING DIMENSIONS FOR DN80/3.00 WEIR 'T' BODY WITH DN8/0.25 BACK SAMPLE ALL ENDS BUTT WELD OD TUBING

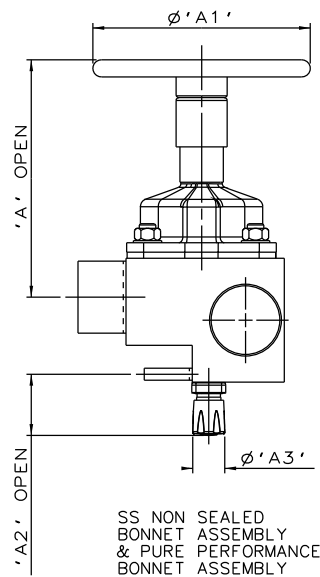
Drawn RI Date 11.10.11  
Checked RND Date 28.03.12

UNCONTROLLED IN HARD COPY FORMAT

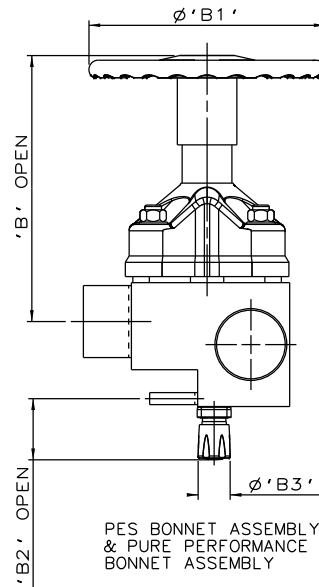
First Angle Projection Method E

DO NOT SCALE Drawing No. WEB-057 Issue. 2

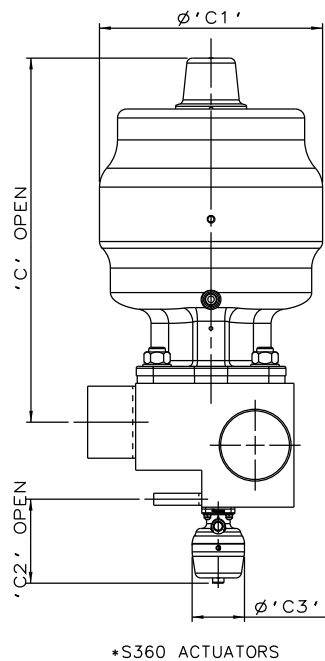
| MAINLINE SIZE | A    |       | B    |      | C    |      | D    |      | ØE   |       | ØF   |       | G    |      | H    |       | I    |      | J    |      | K    |      | L    |       | M    |       | BODY WEIGHT<br>Kgs |      |
|---------------|------|-------|------|------|------|------|------|------|------|-------|------|-------|------|------|------|-------|------|------|------|------|------|------|------|-------|------|-------|--------------------|------|
|               | mm   | inch  | mm   | inch | mm   | inch | mm   | inch | mm   | inch  | mm   | inch  | mm   | inch | mm   | inch  | mm   | inch | mm   | inch | mm   | inch | mm   | inch  | mm   | inch  |                    |      |
| DN80          | 3.00 | 50.8  | 2.00 | 50.8 | 2.00 | 46.5 | 1.83 | 65.5 | 2.58 | 76.2  | 3.00 | 72.9  | 2.87 | 41.1 | 1.62 | 131.0 | 5.16 | 17.5 | 0.69 | 39.0 | 1.53 | 8.4  | 0.33 | 167.5 | 6.59 | 97.5  | 3.84               | 18.3 |
| DN100         | 4.00 | 101.6 | 4.00 | 50.8 | 2.00 | 58.8 | 2.31 | 77.0 | 3.03 | 101.6 | 4.00 | 97.38 | 3.83 | 41.1 | 1.62 | 131.0 | 5.16 | 17.5 | 0.69 | 51.3 | 2.02 | 8.4  | 0.33 | 193.0 | 7.60 | 123.0 | 4.84               | 19.0 |



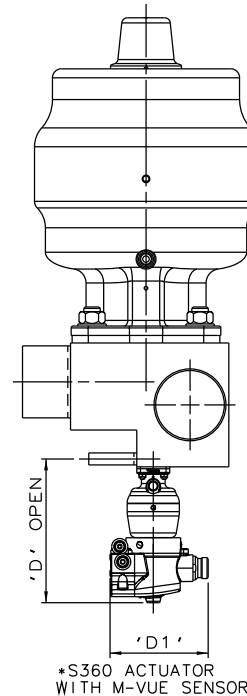
SS NON SEALED  
BONNET ASSEMBLY  
& PURE PERFORMANCE  
BONNET ASSEMBLY



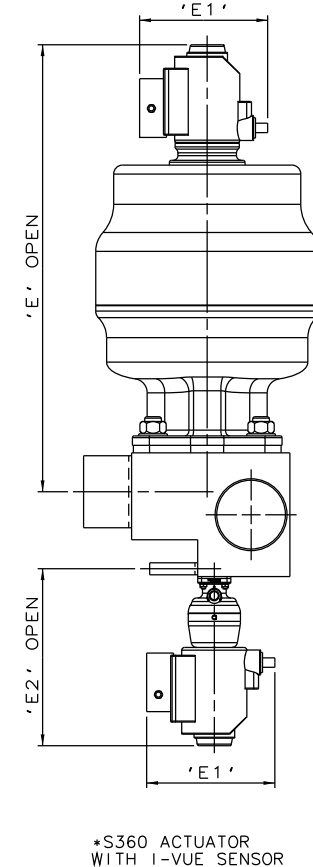
PES BONNET ASSEMBLY  
& PURE PERFORMANCE  
BONNET ASSEMBLY



\*S360 ACTUATORS



\*S360 ACTUATOR  
WITH M-VUE SENSOR



\*S360 ACTUATOR  
WITH I-VUE SENSOR

\*DIMENSIONS SHOW MAXIMUM ENVELOPE FOR ALL MODES

| BRANCH/SAMPLE SIZE |         | A   |      | A1  |      | A2 |      | A3 |      | B   |      | B1  |      | B2 |      | B3 |      | C   |       | C1  |      | C2 |      | C3 |      | D     |      | D1    |      | E     |       | E1    |      | E2    |      |
|--------------------|---------|-----|------|-----|------|----|------|----|------|-----|------|-----|------|----|------|----|------|-----|-------|-----|------|----|------|----|------|-------|------|-------|------|-------|-------|-------|------|-------|------|
| mm                 | inch    | mm  | inch | mm  | inch | mm | inch | mm | inch | mm  | inch | mm  | inch | mm | inch | mm | inch | mm  | inch  | mm  | inch | mm | inch | mm | inch | mm    | inch | mm    | inch | mm    | inch  | mm    | inch | mm    | inch |
| DN80xDN15          | 3.0x0.5 | 251 | 9.88 | 230 | 9.06 | 65 | 2.56 | 34 | 1.33 | 282 | 11.1 | 250 | 9.84 | 65 | 2.56 | 34 | 1.33 | 385 | 15.16 | 236 | 9.29 | 89 | 3.50 | 55 | 2.17 | 153.4 | 6.04 | 103.8 | 4.09 | 473.1 | 18.63 | 136.0 | 5.33 | 187.4 | 7.38 |

The information on this sheet is Private and Confidential and is the property of Crane Process Flow Technologies Limited and must not be published directly or indirectly in any manner whatsoever without the written permission of the Company and must not be used in any way detrimental to their interests.

© Crane Process Flow Technologies

**CRANE** Process Flow Technologies  
A Crane Co. Company

**Saunders**  
The Science Inside

Title  
SCHEDULE OF LEADING DIMENSIONS FOR DN80/3.00  
WEIR 'T' BODY WITH DN8/0.25 BACK SAMPLE  
ALL ENDS BUTT WELDED OD TUBING  
FITTED WITH TOPWORKS OPTIONS

|                                 |               |                          |          |
|---------------------------------|---------------|--------------------------|----------|
| Drawn JRD                       | Date 07.11.16 | UNCONTROLLED IN          |          |
| Checked RND                     | Date 07.11.16 | HARD COPY FORMAT         |          |
| First Angle Projection Method E | DO NOT SCALE  | Drawing No. WEB-057-ASSY | Issue. 1 |