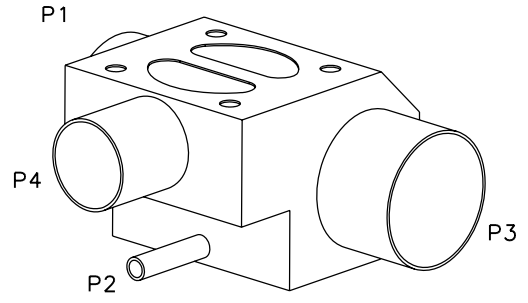
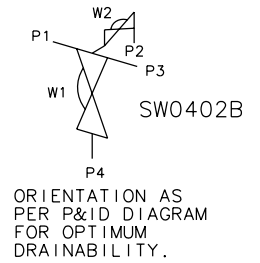
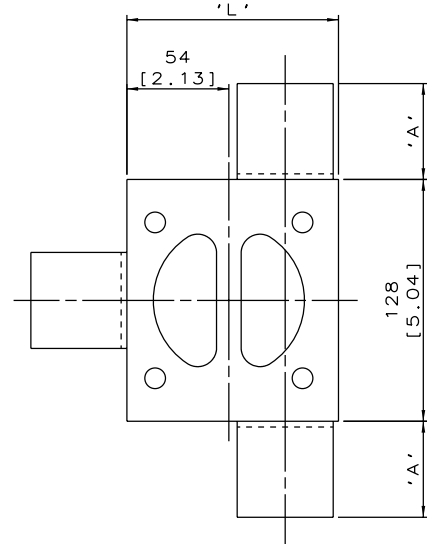


DN50/2.00 TO DN65/2.50
MAINLINE ONLY



DN80/3.00 TO DN100/4.00
MAINLINE ONLY



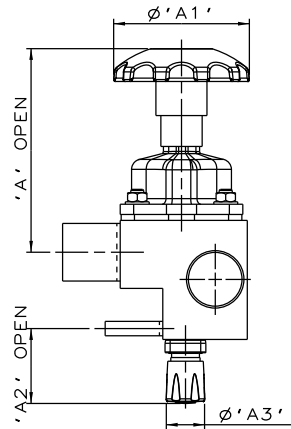
The information on this sheet is Private and Confidential and is the property of Crane Process Flow Technologies Limited and must not be published directly or indirectly in any manner whatsoever without the written permission of the Company and must not be used in any way detrimental to their interests.
© Crane Process Flow Technologies

CRANE	Process Flow Technologies A Crane Co. Company	Saunders The Science Inside
--------------	--	---------------------------------------

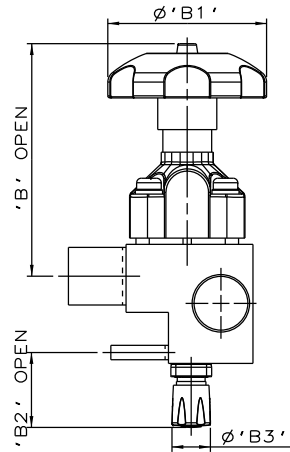
Title
SCHEDULE OF LEADING DIMENSIONS FOR DN50/2.00 WEIR 'T' BODY WITH DN8/0.25 BACK SAMPLE ALL ENDS BUTT WELD OD TUBING

MAINLINE SIZE	A		B		C		D		øE		øF		G		H		J		K		L		M		BODY WEIGHT Kgs			
	mm	inch	mm	inch	mm	inch	mm	inch	mm	inch	mm	inch	mm	inch	mm	inch	mm	inch	mm	inch	mm	inch	mm	inch				
DN50	2.00	50.8	2.00	50.8	2.00	29.8	1.17	52.0	2.05	50.8	2.00	47.5	1.87	28.0	1.10	105.0	4.13	20.0	0.79	26.3	1.03	9.6	0.38	112.0	4.41	74.5	2.93	7.1
DN65	2.50	50.8	2.00	50.8	2.00	36.1	1.42	52.0	2.05	63.5	2.50	60.2	2.37	28.4	1.12	105.0	4.13	20.0	0.79	32.6	1.28	9.4	0.37	125.0	4.92	87.5	3.44	7.6
DN80	3.00	50.8	2.00	50.8	2.00	42.5	1.67	57.0	2.24	76.2	3.00	72.9	2.87	27.9	1.10	105.0	4.13	19.5	0.77	39.5	1.56	9.6	0.38	138.0	5.43	100.5	3.96	6.6
DN100	4.00	101.6	4.00	50.8	2.00	54.8	2.16	67.0	2.64	101.6	4.00	97.38	3.83	28.0	1.10	120.0	4.72	20.0	0.79	51.3	2.02	9.4	0.37	162.0	6.38	124.5	4.90	8.0

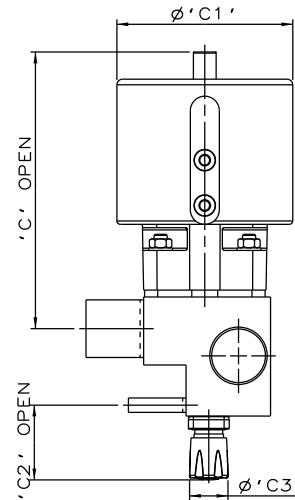
Drawn RI	Date 11.10.11	UNCONTROLLED IN HARD COPY FORMAT
Checked RND	Date 28.03.12	
First Angle Projection Method E	DO NOT SCALE	Drawing No. WEB-055
		Issue. 2



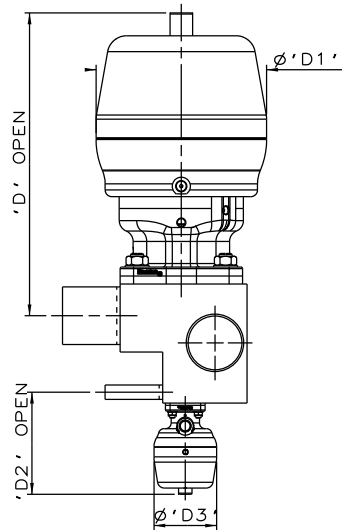
SS NON SEALED
BONNET ASSEMBLY
& PURE PERFORMANCE
BONNET ASSEMBLY



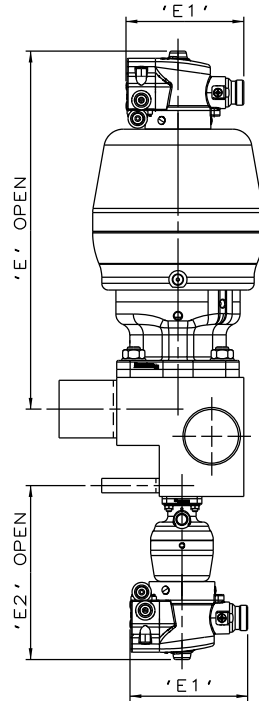
PES BONNET
& PURE PERFORMANCE
BONNET ASSEMBLY



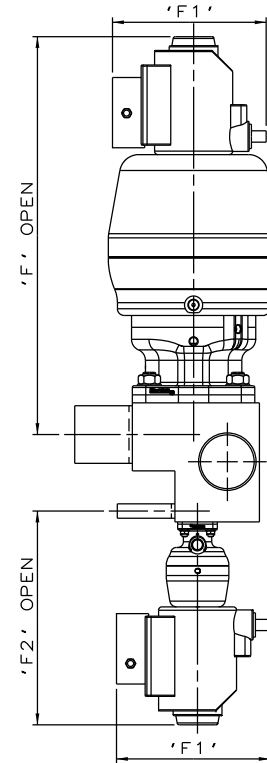
EC ACTUATOR (ALL MODES)
& PURE PERFORMANCE
BONNET ASSEMBLY



*S360 ACTUATORS



*S360 ACTUATOR
WITH M-VUE SENSOR



*S360 ACTUATOR
WITH I-VUE SENSOR

*DIMENSIONS SHOW MAXIMUM ENVELOPE FOR ALL MODES

BRANCH/SAMPLE SIZE		A	A1	A2	A3	B	B1	B2	B3	C	C1	C2	C3	D	D1	D2	D3	E	E1	E2	F	F1	F2																								
mm	inch	mm	inch	mm	inch	mm	inch	mm	inch	mm	inch	mm	inch	mm	inch	mm	inch	mm	inch	mm	inch	mm	inch																								
DN60	DN15	2.0	0.5	180	7.09	120	4.72	66	2.6	34	1.34	205	8.07	140	5.51	66	2.6	34	1.33	244	9.61	155	6.10	66	2.6	34	1.33	267	10.5	150	5.90	90	3.54	55	2.17	315.4	12.42	103.8	4.09	154.6	6.09	351.4	13.84	136.0	5.35	188.6	7.43

The information on this sheet is Private and Confidential and is the property of Crane Process Flow Technologies Limited and must not be published directly or indirectly in any manner whatsoever without the written permission of the Company and must not be used in any way detrimental to their interests.

© Crane Process Flow Technologies

CRANE Process Flow Technologies
A Crane Co. Company

Saunders
The Science Inside

Title
SCHEDULE OF LEADING DIMENSIONS FOR DN50/2.00
WEIR 'T' BODY WITH DN8/0.25 BACK SAMPLE
ALL ENDS BUTT WELD OD TUBING
FITTED WITH TOPWORKS OPTIONS

Drawn JRD Date 07.11.16

UNCONTROLLED IN
HARD COPY FORMAT

Checked RND Date 70.11.16

First Angle Projection Method E

Drawing No.
WEB-055-ASSY Issue.
1

DO NOT SCALE