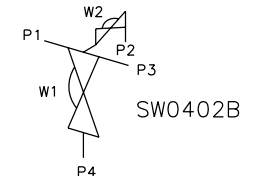
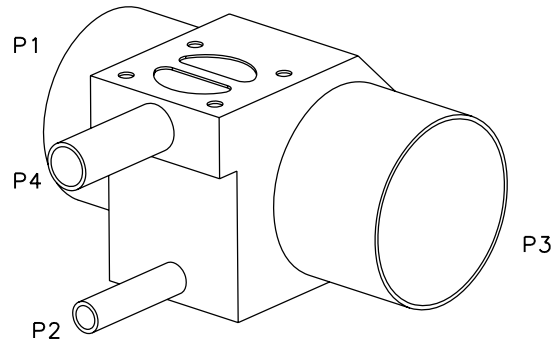


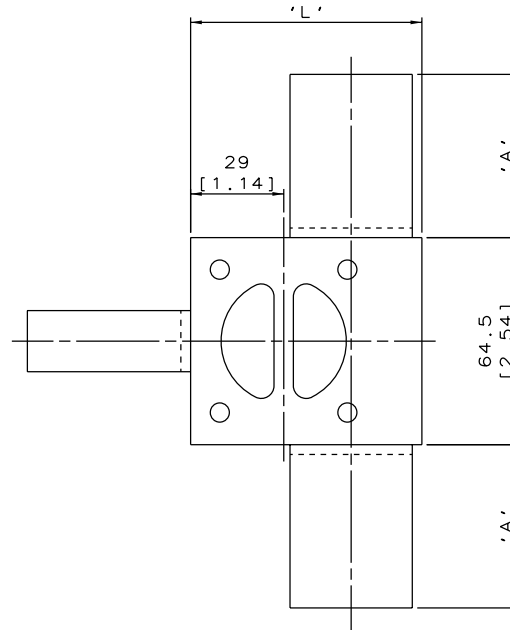
DN20/0.75 TO DN65/2.50  
MAINLINE ONLY



ORIENTATION AS  
PER P&ID DIAGRAM  
FOR OPTIMUM  
DRAINABILITY.



DN80/3.00 TO DN100/4.00  
MAINLINE ONLY



MAINLINE SIZE		A		B		C		D		$\phi E$		$\phi F$		G		H		I		J		K		L		M		BODY WEIGHT Kgs
mm	inch	mm	inch	mm	inch	mm	inch	mm	inch	mm	inch	mm	inch	mm	inch	mm	inch	mm	inch	mm	inch	mm	inch	mm	inch	mm	inch	
DN20	0.75	50.8	2.00	50.8	2.00	11.4	0.45	32.5	1.28	19.05	0.75	15.75	0.62	12.5	0.49	65.0	2.56	20.0	0.79	10.4	0.41	9.4	0.37	58.0	2.28	48.0	1.89	1.5
DN25	1.00	50.8	2.00	50.8	2.00	14.6	0.57	31.0	1.22	25.4	1.00	22.1	0.87	12.5	0.49	62.0	2.44	18.0	0.71	13.6	0.54	9.4	0.37	59.0	2.32	47.0	1.85	1.4
DN40	1.50	50.8	2.00	50.8	2.00	21.0	0.83	38.0	1.50	38.1	1.50	34.8	1.37	12.5	0.49	70.0	2.76	20.0	0.79	20.0	0.79	9.6	0.38	72.0	2.83	62.0	2.44	1.8
DN50	2.00	50.8	2.00	50.8	2.00	27.3	1.07	38.0	1.50	50.8	2.00	47.5	1.87	12.5	0.49	70.0	2.76	20.0	0.79	26.3	1.03	9.6	0.38	84.0	3.31	74.0	2.91	1.9
DN65	2.50	50.8	2.00	50.8	2.00	33.6	1.32	43.0	1.69	63.5	2.50	60.2	2.37	12.5	0.49	80.0	3.15	18.0	0.71	32.6	1.28	9.6	0.38	96.0	3.78	84.0	3.31	2.4
DN80	3.00	50.8	2.00	50.8	2.00	40.0	1.57	47.0	1.85	76.2	3.00	72.9	2.87	12.5	0.49	87.0	3.43	20.0	0.79	39.0	1.54	9.6	0.38	110.0	4.33	100.0	3.94	2.3
DN100	4.00	101.6	4.00	50.8	2.00	52.3	2.06	54.0	2.13	101.6	4.00	97.38	3.83	11.5	0.45	108.0	4.25	30.0	1.18	51.3	2.02	8.4	0.33	136.0	5.35	N/A	N/A	3.3

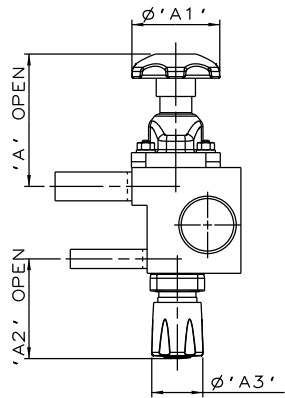
The information on this sheet is Private and Confidential and is the property of Crane Process Flow Technologies Limited and must not be published directly or indirectly in any manner whatsoever without the written permission of the Company and must not be used in any way detrimental to their interests.  
© Crane Process Flow Technologies

**CRANE** Process Flow Technologies  
A Crane Co. Company

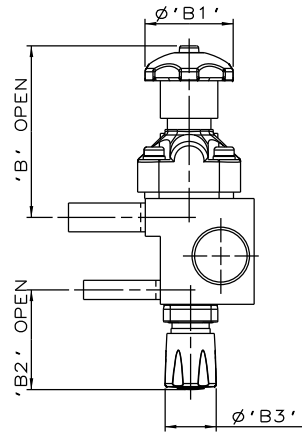
**Saunders**  
The Science Inside

Title  
SCHEDULE OF LEADING DIMENSIONS FOR DN20/0.75  
WEIR 'T' BODY WITH DN8/0.25 BACK SAMPLE  
ALL ENDS BUTT WELD OD TUBING

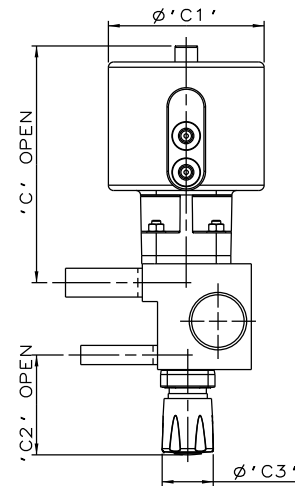
Drawn RI	Date 11.10.11	UNCONTROLLED IN HARD COPY FORMAT
Checked RND	Date 26.03.12	
First Angle Projection Method E		DO NOT SCALE
Drawing No. WEB-052		Issue. 2



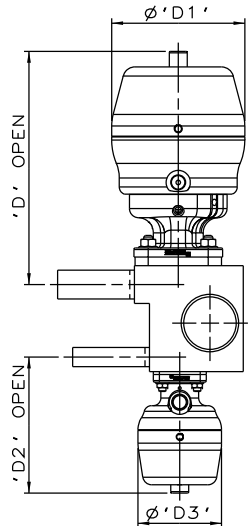
SS NON SEALED  
& PURE PERFORMANCE  
BONNET ASSEMBLY



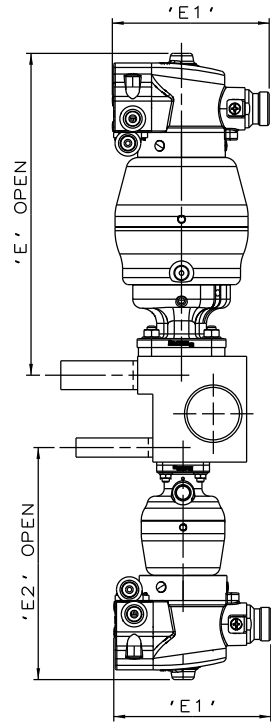
PES BONNET ASSEMBLY  
& PURE PERFORMANCE  
BONNET ASSEMBLY



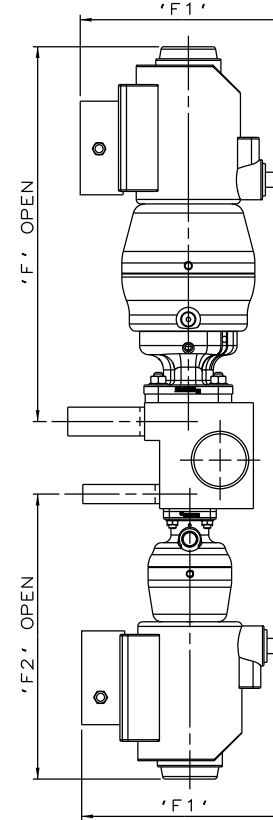
EC ACTUATOR (ALL MODES)  
& PURE PERFORMANCE  
BONNET ASSEMBLY



\*S360 ACTUATORS



\*S360 ACTUATOR  
WITH M-VUE SENSOR



\*S360 ACTUATOR  
WITH I-VUE SENSOR

The information on this sheet is Private and Confidential and is the property of Crane Process Flow Technologies Limited and must not be published directly or indirectly in any manner whatsoever without the written permission of the Company and must not be used in any way detrimental to their interests.  
© Crane Process Flow Technologies

**CRANE** Process Flow Technologies  
A Crane Co. Company

**Saunders**  
The Science Inside

Title  
SCHEDULE OF LEADING DIMENSIONS FOR DN20/0.75 WEIR 'T' BODY WITH DN8/0.25 BACK SAMPLE WITH ALL ENDS BUTT WELD OD TUBING. FITTED WITH TOPWORKS OPTIONS

Drawn RI Date 29.06.16 UNCONTROLLED IN  
Checked RND Date 29.06.16 HARD COPY FORMAT

First Angle Projection DO NOT SCALE Drawing No. WEB-052-ASSY Issue. 1

\* DIMENSIONS SHOW MAXIMUM ENVELOPE FOR ALL MODES

BRANCH / SAMPLE SIZE	A	A1	A2	A3	B	B1	B2	B3	C	C1	C2	C3	D	D1	D2	D3	E	E1	E2	F	F1	F2	
mm / inch	mm / inch	mm / inch	mm / inch	mm / inch	mm / inch	mm / inch	mm / inch	mm / inch	mm / inch	mm / inch	mm / inch	mm / inch	mm / inch	mm / inch	mm / inch	mm / inch	mm / inch	mm / inch	mm / inch	mm / inch	mm / inch	mm / inch	
DN20+DN15	0.75x0.5	87.5 / 3.44	62.0 / 2.44	66.0 / 2.60	34.0 / 1.34	113.5 / 4.47	62.0 / 2.44	66.0 / 2.60	34.0 / 1.34	156.5 / 6.16	103.0 / 4.05	66.0 / 2.60	34.0 / 1.34	163.5 / 6.44	98.0 / 3.87	89.6 / 3.53	55.0 / 2.18	224.5 / 8.84	103.8 / 4.09	154.6 / 6.09	259.5 / 10.22	136.0 / 5.35	188.6 / 7.43