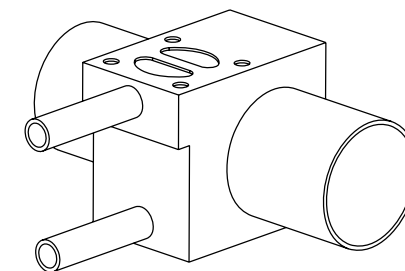
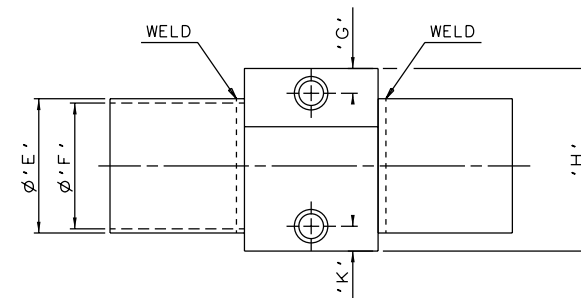
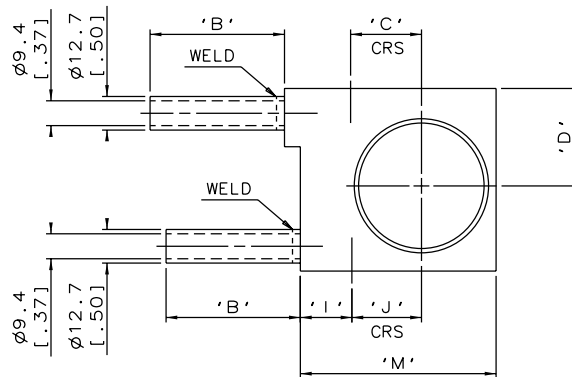
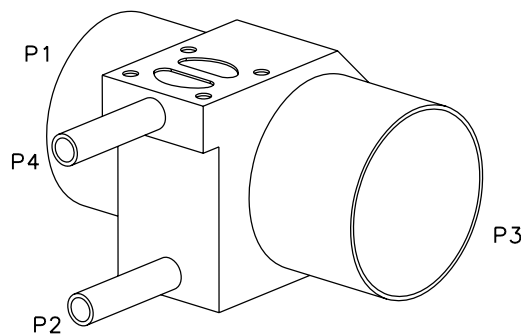


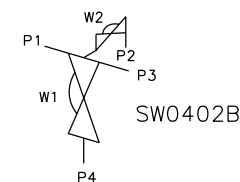
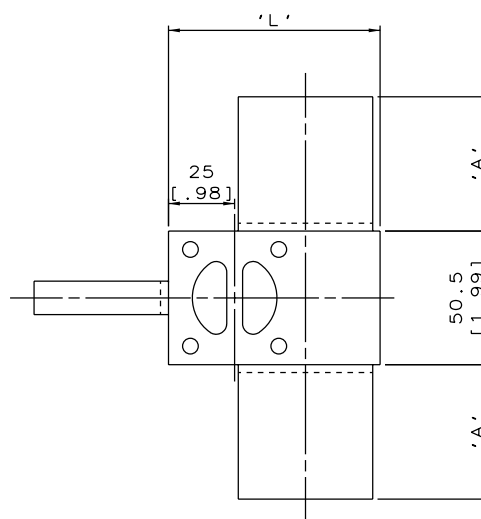
DN15/0.50 TO DN40/1.50
MAINLINE ONLY



DN50/2.00 TO DN65/2.50
MAINLINE ONLY



DN80/3.00 TO DN100/4.00
MAINLINE ONLY



ORIENTATION AS
PER P&ID DIAGRAM
FOR OPTIMUM
DRAINABILITY.

MAINLINE SIZE		A		B		C		D		øE		øF		G		H		I		J		K		L		M		BODY WEIGHT
mm	inch	mm	inch	mm	inch	mm	inch	mm	inch	mm	inch	mm	inch	mm	inch	mm	inch	mm	inch	mm	inch	mm	inch	mm	inch	mm	inch	Kgs
DN15	0.50	50.8	2.00	50.8	2.00	7.7	0.30	25.0	0.98	12.7	0.50	9.4	0.37	8.3	0.33	50.0	1.97	25.5	1.00	7.2	0.28	8.4	0.33	50.0	1.97	N/A	N/A	0.9
DN20	0.75	50.8	2.00	50.8	2.00	11.2	0.44	26.5	1.04	19.05	0.75	15.75	0.62	9.6	0.38	53.0	2.09	25.5	1.00	10.7	0.42	9.6	0.38	50.0	1.97	N/A	N/A	1.0
DN25	1.00	50.8	2.00	50.8	2.00	14.4	0.57	26.5	1.04	25.4	1.00	22.1	0.87	9.4	0.37	53.0	2.09	26.0	1.02	13.4	0.53	9.4	0.37	54.1	2.13	N/A	N/A	1.1
DN40	1.50	50.8	2.00	50.8	2.00	20.4	0.80	32.0	1.26	38.1	1.50	34.8	1.37	9.3	0.37	63.0	2.48	25.5	1.00	19.9	0.78	9.4	0.37	68.0	2.68	N/A	N/A	1.4
DN50	2.00	50.8	2.00	50.8	2.00	26.8	1.06	36.8	1.45	50.8	2.00	47.5	1.87	9.4	0.37	69.0	2.72	19.5	0.77	26.2	1.03	9.4	0.37	80.0	3.15	74.0	2.91	1.6
DN65	2.50	50.8	2.00	50.8	2.00	33.4	1.31	40.4	1.59	63.5	2.50	60.2	2.37	9.3	0.37	76.0	2.99	18.0	0.71	32.6	1.28	9.4	0.37	93.0	3.66	85.2	3.35	1.7
DN80	3.00	50.8	2.00	50.8	2.00	39.5	1.56	45.0	1.77	76.2	3.00	72.9	2.87	9.3	0.37	86.1	3.39	16.5	0.65	39.0	1.53	9.6	0.38	105.6	4.16	96.6	3.80	1.7
DN100	4.00	101.6	4.00	50.8	2.00	51.7	2.04	54.0	2.13	101.6	4.00	97.38	3.83	8.4	0.33	108.0	4.25	25.5	1.00	51.2	2.02	8.4	0.33	131.0	5.16	N/A	N/A	3.2

The information on this sheet is Private and Confidential and is the property of Crane Process Flow Technologies Limited and must not be published directly or indirectly in any manner whatsoever without the written permission of the Company and must not be used in any way detrimental to their interests.
© Crane Process Flow Technologies

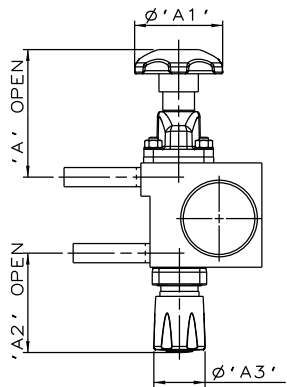
CRANE Process Flow Technologies
A Crane Co. Company

Saunders
The Science Inside

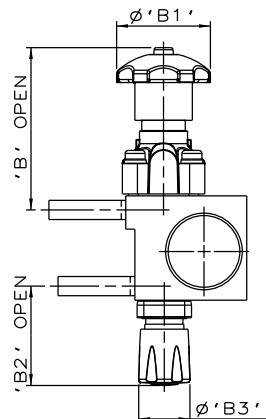
Title
SCHEDULE OF LEADING DIMENSIONS FOR DN15/0.50
WEIR 'T' BODY WITH DN8/0.25 BACK SAMPLE
ALL ENDS BUTT WELD OD TUBING

Drawn RI Date 11.10.11 UNCONTROLLED IN
Checked RND Date 23.03.12 HARD COPY FORMAT

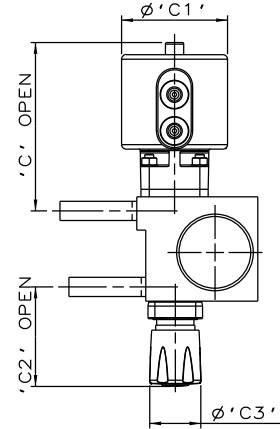
First Angle Projection Method E DO NOT SCALE Drawing No. WEB-051 Issue. 2



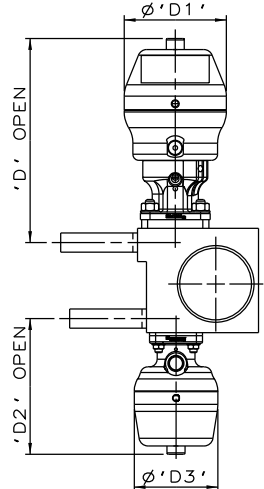
SS NON SEALED
& PURE PERFORMANCE
BONNET ASSEMBLY



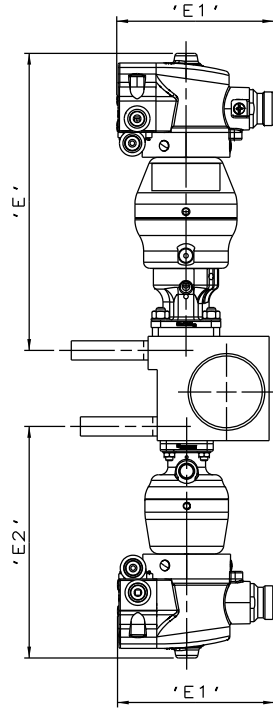
SS NON SEALED
& PURE PERFORMANCE
BONNET ASSEMBLY



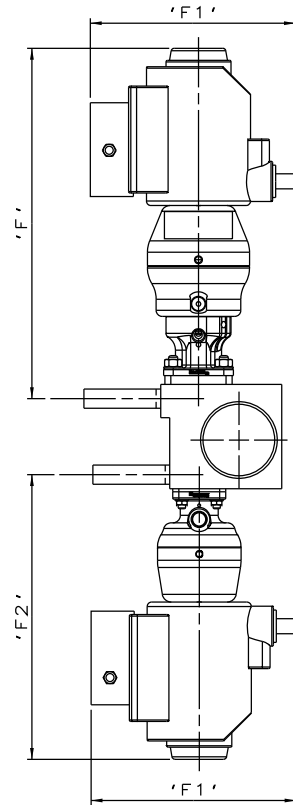
EC ACTUATOR (ALL MODES)
& PURE PERFORMANCE
BONNET ASSEMBLY



*S360 ACTUATORS



*S360 ACTUATOR
WITH M-VUE SENSOR



*S360 ACTUATOR
WITH I-VUE SENSOR

The information on this sheet is Private and Confidential and is the property of Crane Process Flow Technologies Limited and must not be published directly or indirectly in any manner whatsoever without the written permission of the Company and must not be used in any way detrimental to their interests.

Crane Process Flow Technologies

CRANE Process Flow Technologies
A Crane Co. Company

Saunders
The Science Inside

Title
SCHEDULE OF LEADING DIMENSIONS FOR DN15/0.50
WEIR 'T' BODY WITH DN8/0.25 BACK SAMPLE WITH
ALL ENDS BUTT WELD OD TUBING.
FITTED WITH TOPWORKS OPTIONS

Drawn RI Date 29.06.16 UNCONTROLLED IN
Checked RND Date 29.06.16 HARD COPY FORMAT

First Angle Projection DO NOT SCALE Drawing No. WEB-051-ASSY Issue. 1

* DIMENSIONS SHOW MAXIMUM ENVELOPE FOR ALL MODES

BRANCH / SAMPLE SIZE	A	A1	A2	A3	B	B1	B2	B3	C	C1	C2	C3	D	D1	D2	D3	E	E1	E2	F	F1	F2																								
mm	mm	mm	mm	mm	mm	mm	mm	mm	mm	mm	mm	mm	mm	mm	mm	mm	mm	mm	mm	mm	mm	mm																								
DN15 x DN15	0.50	0.50	84.6	3.33	62.0	2.44	66.0	2.60	34.0	1.34	107.6	4.24	62.0	2.44	66.0	2.60	34.0	1.34	111.6	4.39	70.0	2.75	66.0	2.60	34.0	1.34	135.6	5.34	67.5	2.66	89.6	3.53	55.0	2.18	195.7	7.70	103.8	4.09	154.6	6.09	231.4	9.11	136.0	5.35	188.6	7.43