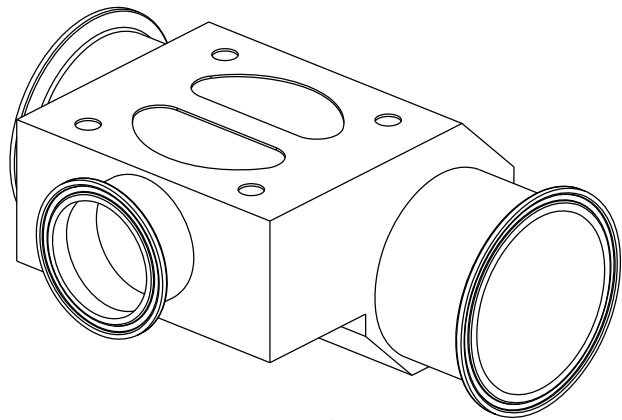
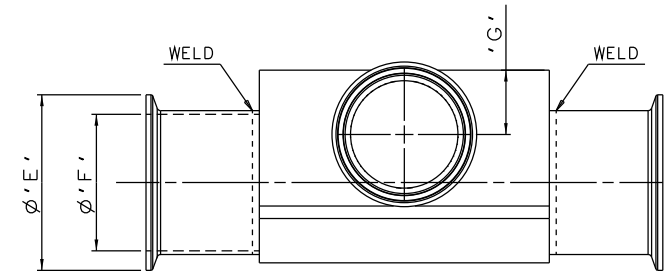
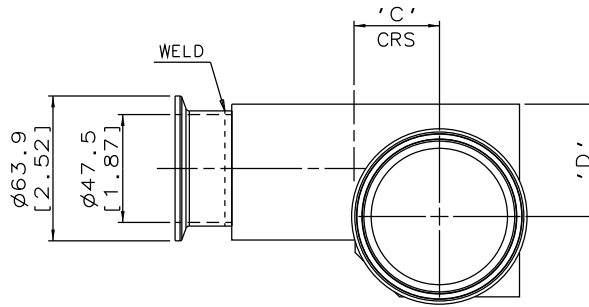
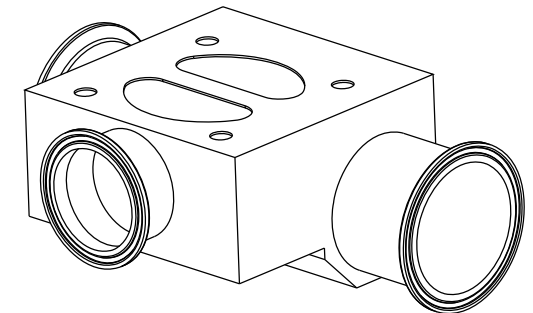
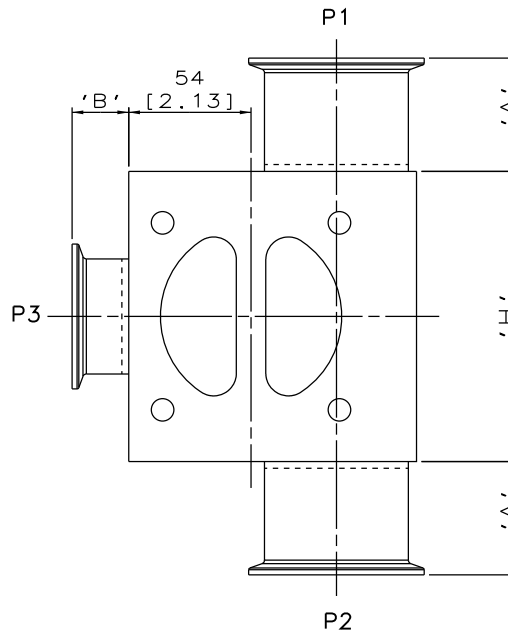


DN50/2.00
MAINLINE ONLY



DN80/3.00 TO DN100/4.00
MAINLINE ONLY



DN65/2.50
MAINLINE ONLY

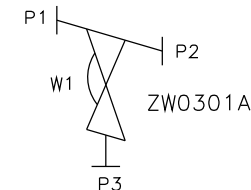
The information on this sheet is Private and Confidential and is the property of Crane Process Flow Technologies Limited and must not be published directly or indirectly in any manner whatsoever without the written permission of the Company and must not be used in any way detrimental to their interests.
© Crane Process Flow Technologies

CRANE Process Flow Technologies
A Crane Co. Company

Saunders
The Science Inside

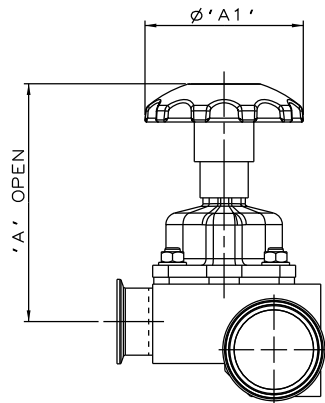
Title
SCHEDULE OF LEADING DIMENSIONS FOR DN50/2.00
WEIR 'T' BODY WITH HYGIENIC CLAMP ENDS

Drawn R1	Date 05.10.11	UNCONTROLLED IN HARD COPY FORMAT
Checked RND	Date 21.03.12	
First Angle Projection Method E	DO NOT SCALE	Drawing No. WEB-028
		Issue. 2

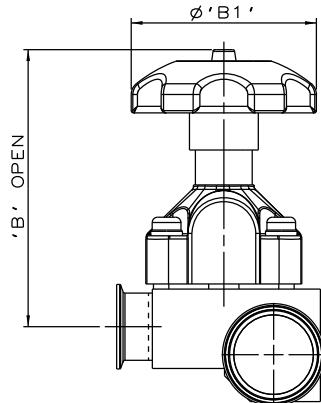


ORIENTATION AS
PER P&ID DIAGRAM
FOR OPTIMUM
DRAINABILITY.

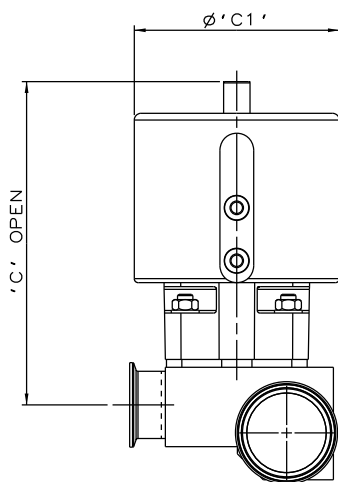
MAINLINE SIZE		A		B		C		D		ØE		ØF		G		H		BODY WEIGHT
mm	inch	mm	inch	mm	inch	mm	inch	mm	inch	mm	inch	mm	inch	mm	inch	mm	inch	Kgs
DN50	2.00	25.0	0.98	25.0	0.98	30.3	1.19	41.5	1.63	63.9	2.52	47.5	1.87	28.4	1.12	128.0	5.04	4.3
DN65	2.50	50.0	1.97	25.0	0.98	37.7	1.48	49.6	1.95	77.4	3.05	60.2	2.37	28.4	1.12	128.0	5.04	5.5
DN80	3.00	50.0	1.97	25.0	0.98	43.9	1.73	54.9	2.16	90.9	3.58	72.9	2.87	28.4	1.12	128.0	5.04	5.4
DN100	4.00	50.0	1.97	25.0	0.98	54.9	2.16	66.3	2.61	118.9	4.68	97.38	3.83	28.4	1.12	128.0	5.04	6.8



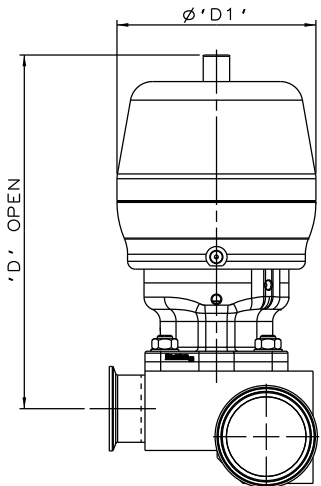
SS NON SEALED
BONNET ASSEMBLY



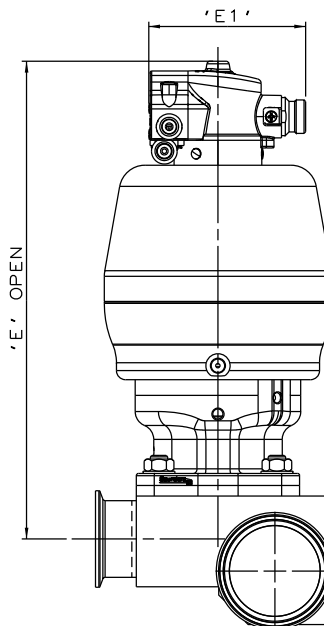
PES BONNET
ASSEMBLY



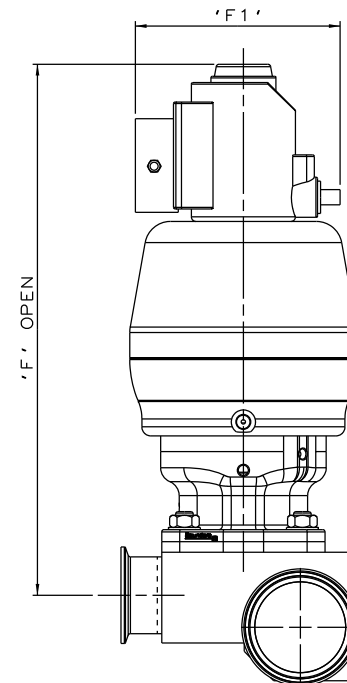
EC ACTUATOR
(ALL MODES)



*S360 ACTUATOR



*S360 ACTUATOR
WITH M-VUE SENSOR



*S360 ACTUATOR
WITH I-VUE SENSOR

The information on this sheet is Private and Confidential and is the property of Crane Process Flow Technologies Limited and must not be published directly or indirectly in any manner whatsoever without the written permission of the Company and must not be used in any way detrimental to their interests.
© Crane Process Flow Technologies

CRANE	Process Flow Technologies	Saunders The Science Inside
	A Crane Co. Company	

Title
SCHEDULE OF LEADING DIMENSIONS FOR DN50/2.00
WEIR 'T' BODY WITH HYGIENIC CLAMP ENDS FITTED
WITH TOPWORKS OPTIONS.

Drawn JRD	Date 15.09.16	UNCONTROLLED IN HARD COPY FORMAT
Checked RND	Date 15.09.16	

First Angle Projection Method E		DO NOT SCALE	Drawing No. WEB-028-ASSY	Issue. 1
---------------------------------------	--	-----------------	-----------------------------	-------------

*DIMENSIONS SHOW MAXIMUM ENVELOPE FOR ALL MODES

BRANCH SIZE		A		A1		B		B1		C		C1		D		D1		E		E1		F		F1	
mm	inch	mm	inch	mm	inch	mm	inch	mm	inch	mm	inch	mm	inch	mm	inch	mm	inch	mm	inch	mm	inch	mm	inch	mm	inch
DN50	2.00	180.0	7.09	120.0	4.72	209.0	8.23	140.0	5.51	244.0	9.60	155.0	6.10	267.0	10.51	150.0	5.92	315.4	12.42	103.8	4.09	351.0	13.82	136.0	5.35