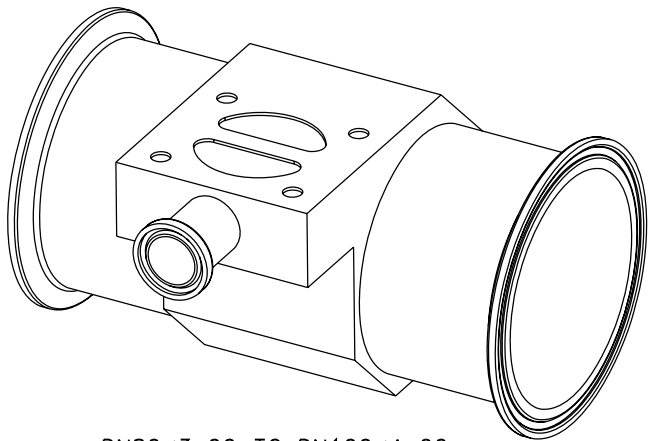
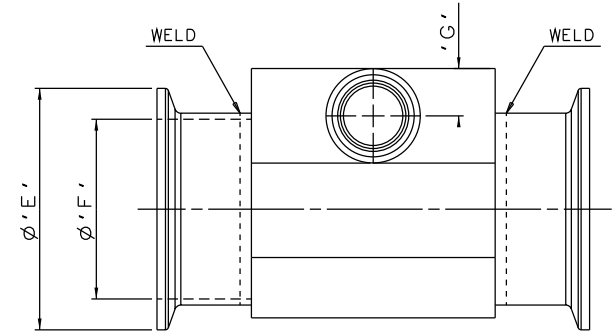
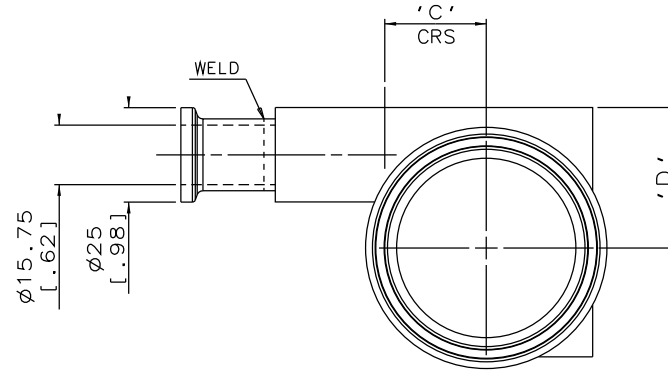
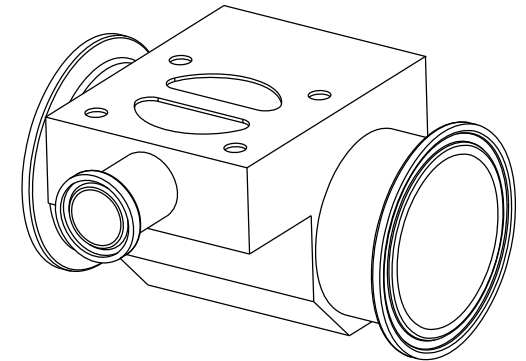
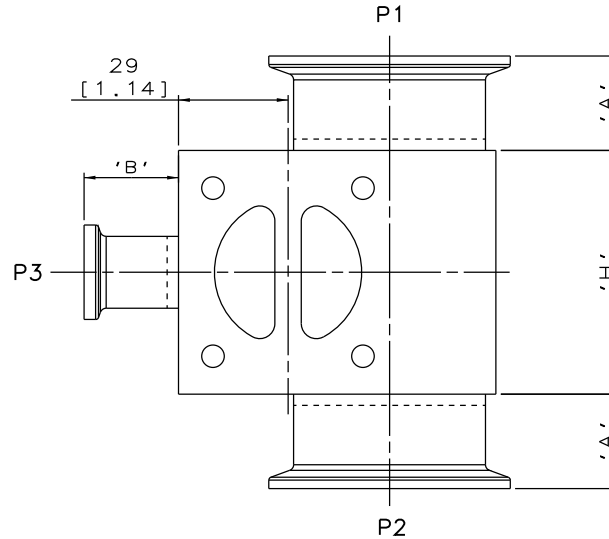


DN20/.075  
MAINLINE ONLY



DN80/3.00 TO DN100/4.00  
MAINLINE ONLY



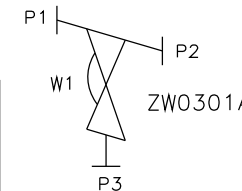
DN25/1.00 TO DN65/2.50  
MAINLINE ONLY

The information on this sheet is Private and Confidential and is the property of Crane Process Flow Technologies Limited and must not be published directly or indirectly in any manner whatsoever without the written permission of the Company and must not be used in any way detrimental to their interests.  
© Crane Process Flow Technologies

<b>CRANE</b>	Process Flow Technologies A Crane Co. Company	<b>Saunders</b> The Science Inside
--------------	--	---------------------------------------

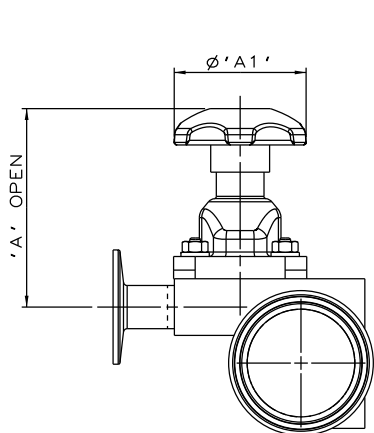
Title  
SCHEDULE OF LEADING DIMENSIONS FOR DN20/0.75  
WEIR 'T' BODY WITH HYGIENIC CLAMP ENDS

Drawn R1	Date 05.10.11	UNCONTROLLED IN HARD COPY FORMAT
Checked RND	Date 08.03.12	
First Angle Projection Method E	DO NOT SCALE	Drawing No. WEB-025
		Issue. 2

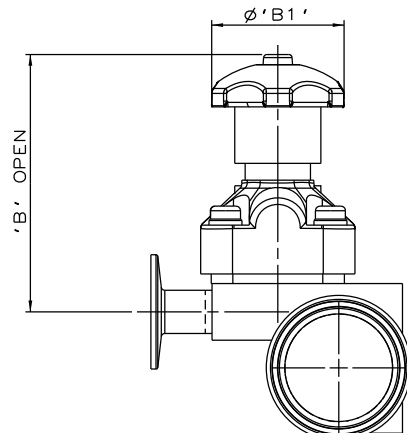


ORIENTATION AS  
PER P&ID DIAGRAM  
FOR OPTIMUM  
DRAINABILITY.

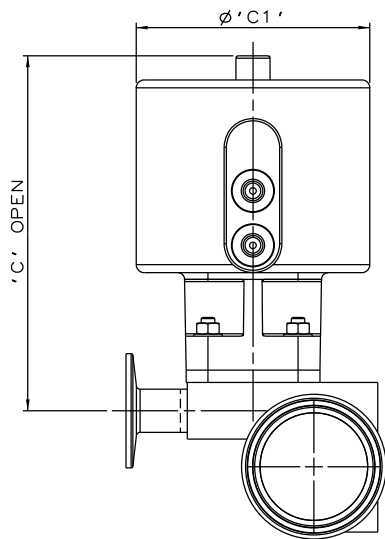
MAINLINE SIZE		A		B		C		D		øE		øF		G		H		BODY WEIGHT
mm	inch	mm	inch	mm	inch	mm	inch	mm	inch	mm	inch	mm	inch	mm	inch	mm	inch	Kgs
DN20	0.75	25.0	0.98	25.0	0.98	10.9	0.43	20.0	0.79	25.0	0.98	15.75	0.62	12.5	0.49	64.5	2.54	0.8
DN25	1.00	25.0	0.98	25.0	0.98	14.9	0.59	26.0	1.02	50.4	1.98	22.1	0.87	12.5	0.49	64.5	2.54	0.8
DN40	1.50	25.0	0.98	25.0	0.98	20.5	0.81	32.0	1.26	50.4	1.98	34.8	1.37	12.5	0.49	64.5	2.54	1.0
DN50	2.00	25.0	0.98	25.0	0.98	26.9	1.06	37.2	1.46	63.9	2.52	47.5	1.87	12.5	0.49	64.5	2.54	1.3
DN65	2.50	50.0	1.97	25.0	0.98	33.6	1.32	42.5	1.67	77.4	3.05	60.2	2.37	12.5	0.49	64.5	2.54	1.8
DN80	3.00	50.0	1.97	25.0	0.98	39.5	1.56	46.2	1.82	90.9	3.58	72.9	2.87	12.5	0.49	64.5	2.54	1.9
DN100	4.00	50.0	1.97	25.0	0.98	52.3	2.06	58.2	2.29	118.9	4.68	97.38	3.83	12.5	0.49	64.5	2.54	2.8



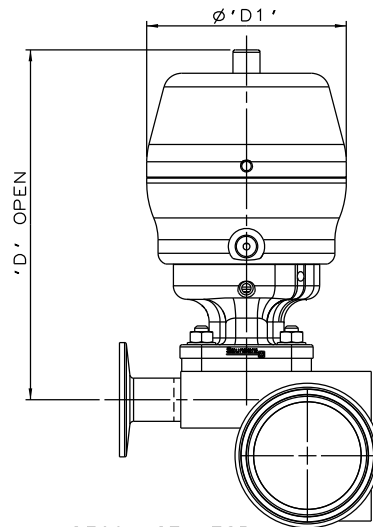
SS NON SEALED  
BONNET ASSEMBLY



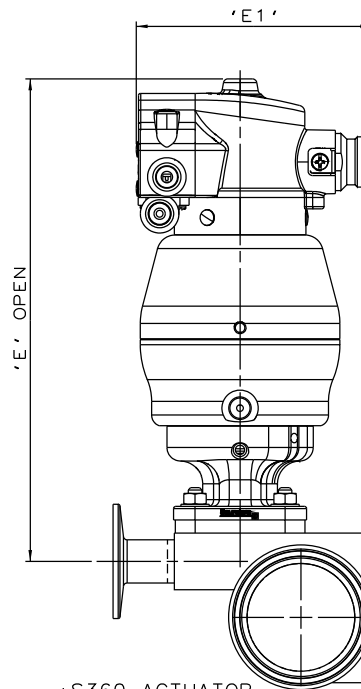
PES BONNET  
ASSEMBLY



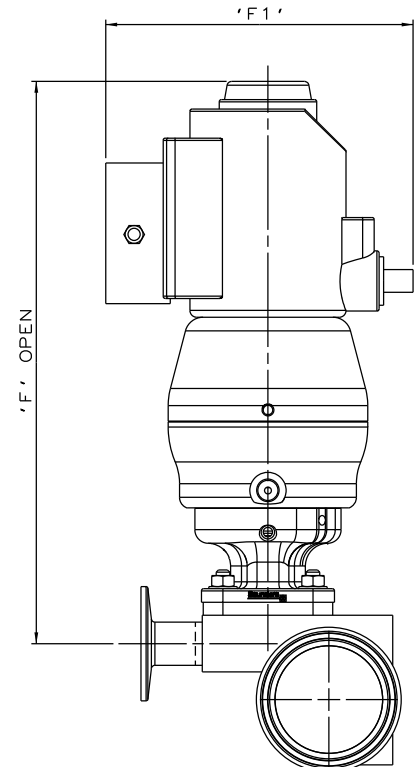
EC ACTUATOR  
(ALL MODES)



\*S360 ACTUATOR



\*S360 ACTUATOR  
WITH M-VUE SENSOR



\*S360 ACTUATOR  
WITH I-VUE SENSOR

\* DIMENSIONS SHOW MAXIMUM ENVELOPE FOR ALL MODES

BRANCH SIZE		A		A1		B		B1		C		C1		D		D1		E		E1		F		F1	
mm	inch	mm	inch	mm	inch	mm	inch	mm	inch	mm	inch	mm	inch	mm	inch	mm	inch	mm	inch	mm	inch	mm	inch	mm	inch
DN20	0.75	87.5	3.44	62.0	2.44	113.5	4.47	62.0	2.44	156.5	6.16	103.0	4.05	163.5	6.44	98.0	3.87	224.5	8.84	103.8	4.09	259.5	10.22	136.0	5.35

The information on this sheet is Private and Confidential and is the property of Crane Process Flow Technologies Limited and must not be published directly or indirectly in any manner whatsoever without the written permission of the Company and must not be used in any way detrimental to their interests.  
© Crane Process Flow Technologies

<b>CRANE</b>	Process Flow Technologies A Crane Co. Company	<b>Saunders</b> The Science Inside
--------------	--	---------------------------------------

Title  
SCHEDULE OF LEADING DIMENSIONS FOR DN20/0.75 WEIR  
'T'BODY (DN20/0.75 BRANCH) WITH HYGIENIC CLAMP ENDS  
FITTED WITH TOPWORKS OPTIONS

Drawn R1	Date 28.06.16	UNCONTROLLED IN HARD COPY FORMAT	
Checked RND	Date 28.06.16		
First Angle Projection Method E	DO NOT SCALE	Drawing No. WEB-025-ASSY	Issue. 1