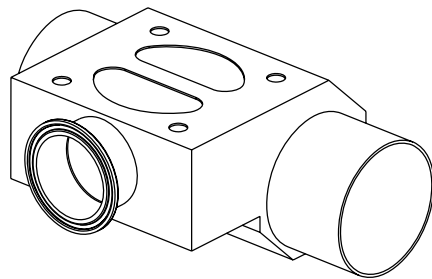
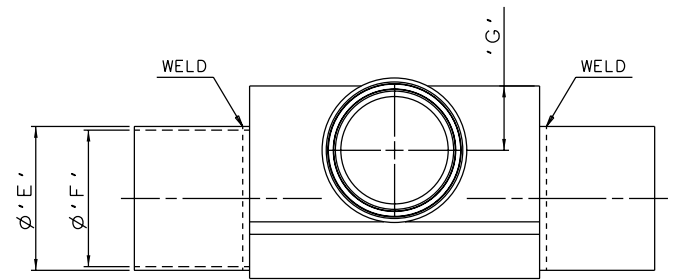
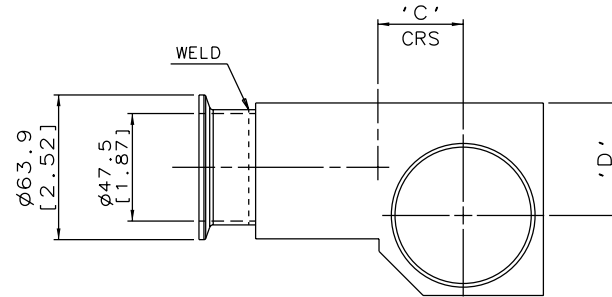
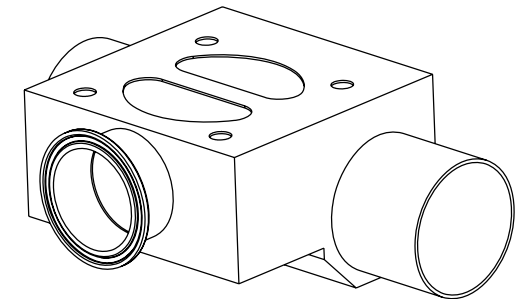
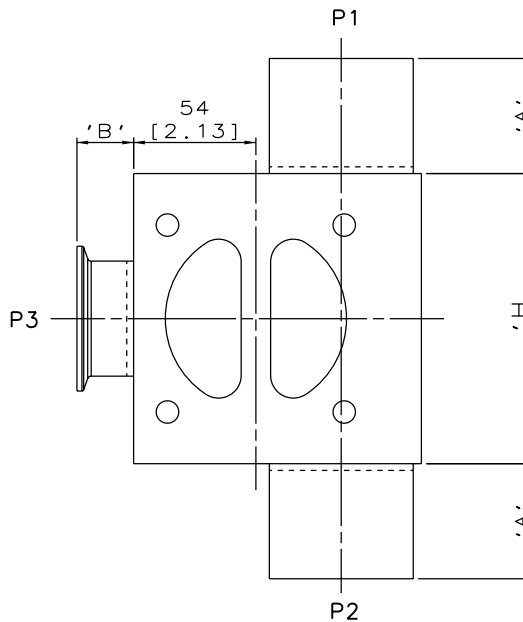


DN50/2.00
MAINLINE ONLY



DN80/3.00 TO DN100/4.00
MAINLINE ONLY



DN65/2.50
MAINLINE ONLY

The information on this sheet is Private and Confidential and is the property of Crane Process Flow Technologies Limited and must not be published directly or indirectly in any manner whatsoever without the written permission of the Company and must not be used in any way detrimental to their interests.
© Crane Process Flow Technologies

CRANE Process Flow Technologies
A Crane Co. Company

Saunders
The Science Inside

Title
SCHEDULE OF LEADING DIMENSIONS FOR DN50/2.00
WEIR 'T' BODY COMPLETE WITH :
MAINLINE : BUTT WELD OD TUBE ENDS
BRANCH : DN50/2.00 HYGIENIC CLAMP END

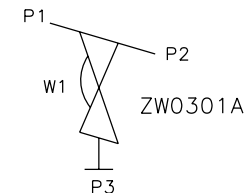
Drawn RI Date 07.10.11

UNCONTROLLED IN
HARD COPY FORMAT

Checked RND Date 21.03.12

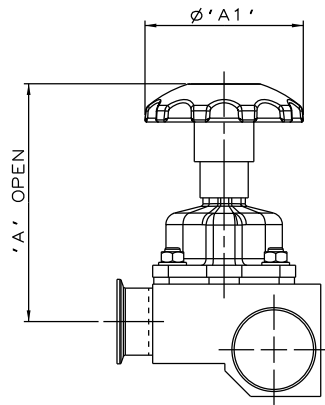
First Angle Projection Method E

Drawing No. WEB-019 Issue. 2

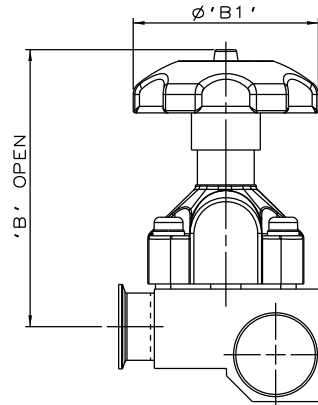


ORIENTATION AS
PER P&ID DIAGRAM
FOR OPTIMUM
DRAINABILITY.

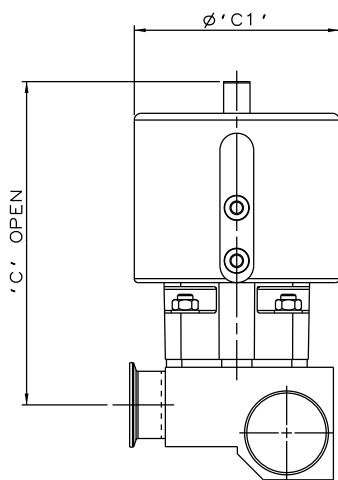
MAINLINE SIZE		A		B		C		D		øE		øF		G		H		BODY WEIGHT
mm	inch	mm	inch	mm	inch	mm	inch	mm	inch	mm	inch	mm	inch	mm	inch	mm	inch	Kgs
DN50	2.00	50.8	2.00	25.0	0.98	30.3	1.19	41.5	1.63	50.8	2.00	47.5	1.87	28.4	1.12	128.0	5.04	4.3
DN65	2.50	50.8	2.00	25.0	0.98	37.7	1.48	49.6	1.95	63.5	2.50	60.2	2.37	28.4	1.12	128.0	5.04	5.4
DN80	3.00	50.8	2.00	25.0	0.98	43.9	1.73	54.9	2.16	76.2	3.00	72.9	2.87	28.4	1.12	128.0	5.04	5.2
DN100	4.00	101.6	4.00	25.0	0.98	54.9	2.16	66.3	2.61	101.6	4.00	97.38	3.83	28.4	1.12	128.0	5.04	7.1



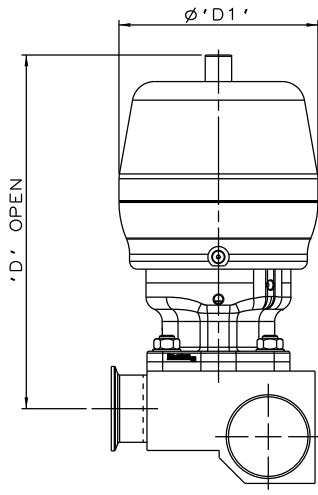
SS NON SEALED
BONNET ASSEMBLY



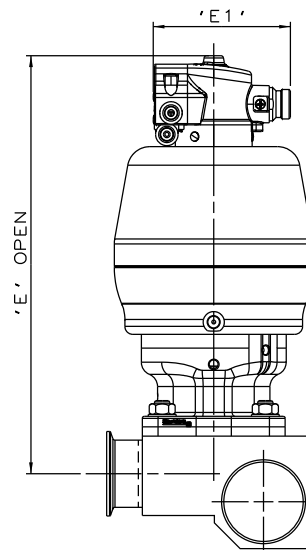
PES BONNET
ASSEMBLY



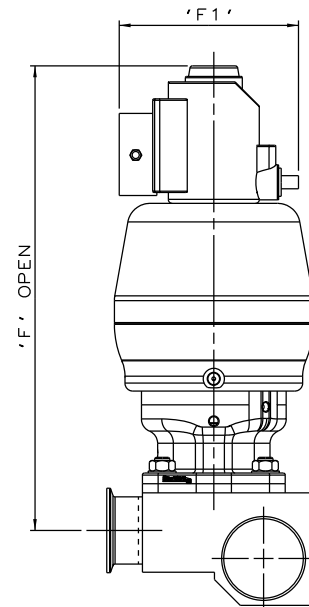
EC ACTUATOR
(ALL MODES)



*S360 ACTUATOR



*S360 ACTUATOR
WITH M-VUE SENSOR



*S360 ACTUATOR
WITH I-VUE SENSOR

The information on this sheet is Private and Confidential and is the property of Crane Process Flow Technologies Limited and must not be published directly or indirectly in any manner whatsoever without the written permission of the Company and must not be used in any way detrimental to their interests.
© Crane Process Flow Technologies

CRANE Process Flow Technologies
A Crane Co. Company

Saunders
The Science Inside

Title
SCHEDULE OF LEADING DIMENSIONS FOR DN50/2.00
WEIR 'T' BODY WITH MAINLINE BUTT WELD OD TUBE ENDS,
BRANCH HYGIENIC CLAMP END FITTED WITH TOPWORKS OPTIONS

Drawn JRD Date 15.09.16

UNCONTROLLED IN
HARD COPY FORMAT

Checked RND Date 15.09.16

First Angle Projection Method E

Drawing No. WEB-019-ASSY Issue. 1

*DIMENSIONS SHOW MAXIMUM ENVELOPE FOR ALL MODES

BRANCH SIZE	A		A1		B		B1		C		C1		D		D1		E		E1		F		F1		
	mm	inch	mm	inch	mm	inch	mm	inch	mm	inch	mm	inch	mm	inch	mm	inch	mm	inch	mm	inch	mm	inch	mm	inch	
DN50	2.00	180.0	7.09	120.0	4.72	209.0	8.23	140.0	5.51	244.0	9.60	155.0	6.10	267.0	10.51	150.0	5.92	315.4	12.42	103.8	4.09	351.0	13.82	136.0	5.35