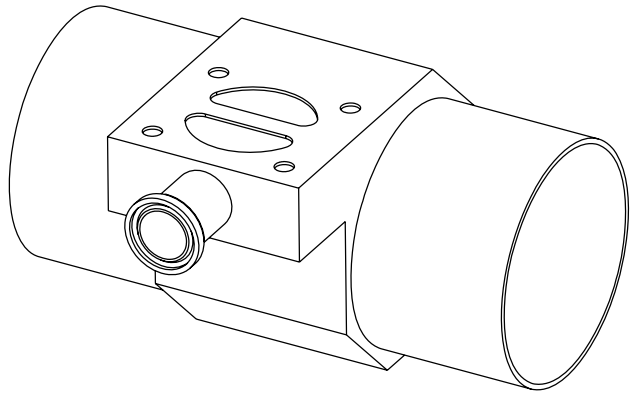
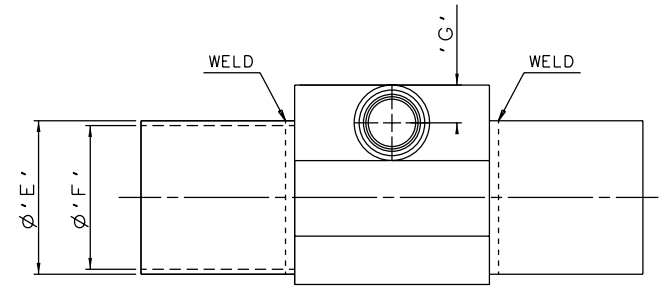
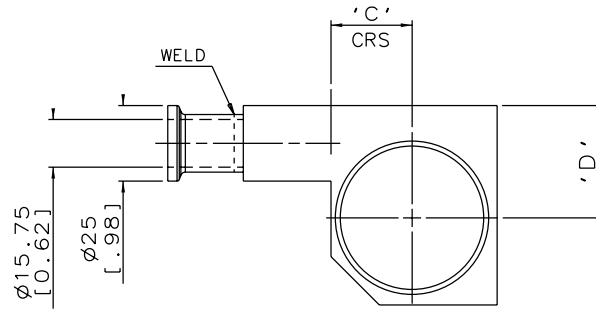
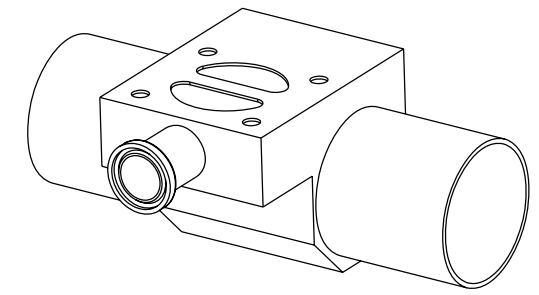
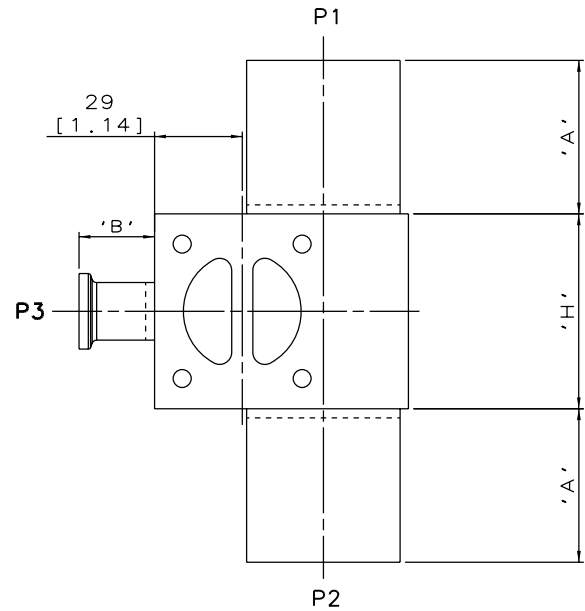


DN20/0.75  
MAINLINE ONLY



DN80/3.00 TO DN100/4.00  
MAINLINE ONLY



DN25/1.00 TO DN65/2.50  
MAINLINE ONLY

The information on this sheet is Private and Confidential and is the property of Crane Process Flow Technologies Limited and must not be published directly or indirectly in any manner whatsoever without the written permission of the Company and must not be used in any way detrimental to their interests.  
© Crane Process Flow Technologies

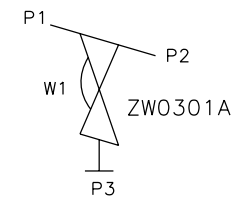
**CRANE** Process Flow Technologies  
A Crane Co. Company

**Saunders**  
The Science Inside

Title  
SCHEDULE OF LEADING DIMENSIONS FOR DN20/0.75  
WEIR 'T' BODY COMPLETE WITH :  
MAINLINE : BUTT WELD OD TUBE ENDS  
BRANCH : DN20/0.75 HYGIENIC CLAMP END

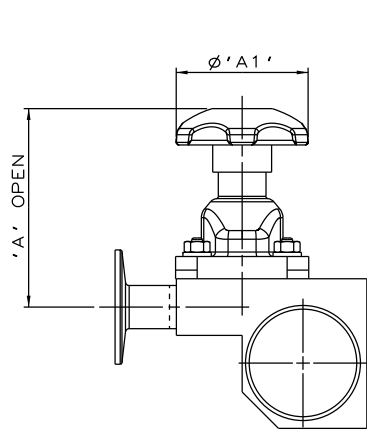
Drawn RI Date 07.10.11 UNCONTROLLED IN  
Checked RND Date 08.03.12 HARD COPY FORMAT

First Angle Projection Method E DO NOT SCALE Drawing No. WEB-016 Issue. 2

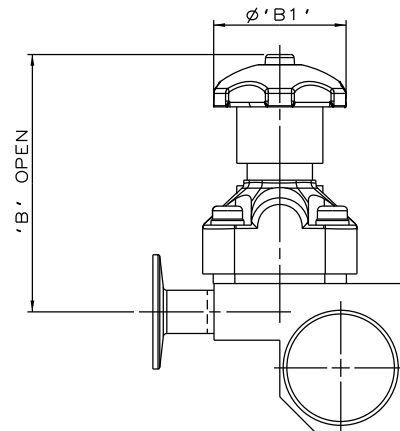


ORIENTATION AS PER P&ID DIAGRAM FOR OPTIMUM DRAINABILITY.

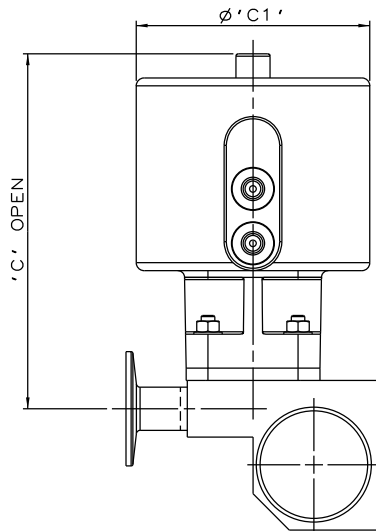
MAINLINE SIZE		A		B		C		D		ØE		ØF		G		H		BODY WEIGHT Kgs
mm	inch	mm	inch	mm	inch	mm	inch	mm	inch	mm	inch	mm	inch	mm	inch	mm	inch	
DN20	0.75	50.8	2.00	25.0	0.98	10.9	0.43	20.0	0.79	19.05	0.75	15.75	0.62	12.5	0.49	64.5	2.54	0.8
DN25	1.00	50.8	2.00	25.0	0.98	14.9	0.59	26.0	1.02	25.4	1.00	22.1	0.87	12.5	0.49	64.5	2.54	0.8
DN40	1.50	50.8	2.00	25.0	0.98	20.5	0.81	32.0	1.26	38.1	1.50	34.8	1.37	12.5	0.49	64.5	2.54	1.0
DN50	2.00	50.8	2.00	25.0	0.98	26.9	1.06	37.2	1.46	50.8	2.00	47.5	1.87	12.5	0.49	64.5	2.54	1.3
DN65	2.50	50.8	2.00	25.0	0.98	33.6	1.32	42.5	1.67	63.5	2.50	60.2	2.37	12.5	0.49	64.5	2.54	1.5
DN80	3.00	50.8	2.00	25.0	0.98	39.5	1.56	46.2	1.82	76.2	3.00	72.9	2.87	12.5	0.49	64.5	2.54	1.5
DN100	4.00	101.6	4.00	25.0	0.98	52.3	2.06	58.2	2.29	101.6	4.00	97.38	3.83	12.5	0.49	64.5	2.54	2.8



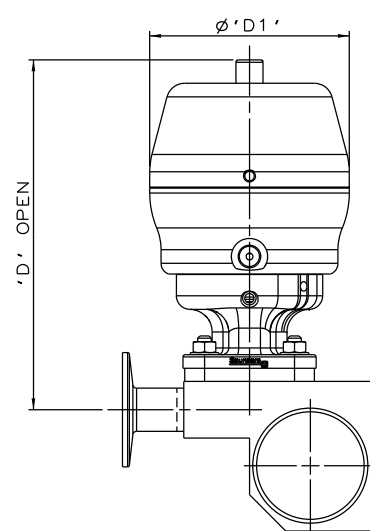
SS NON SEALED  
BONNET ASSEMBLY



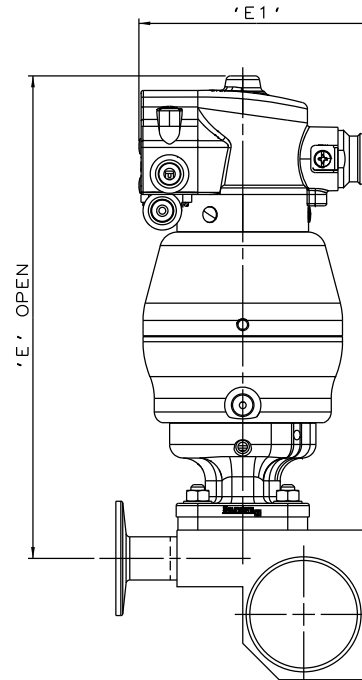
PES BONNET  
ASSEMBLY



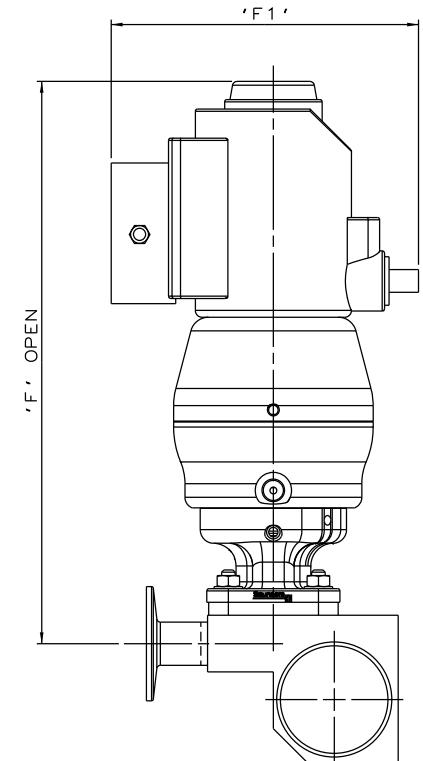
EC ACTUATOR  
(ALL MODES)



\*S360 ACTUATOR



\*S360 ACTUATOR  
WITH M-VUE SENSOR



\*S360 ACTUATOR  
WITH I-VUE SENSOR

\* DIMENSIONS SHOW MAXIMUM ENVELOPE FOR ALL MODES

BRANCH SIZE	A		A1		B		B1		C		C1		D		D1		E		E1		F		F1		
	mm	inch	mm	inch	mm	inch	mm	inch	mm	inch	mm	inch	mm	inch	mm	inch	mm	inch	mm	inch	mm	inch	mm	inch	
DN20	0.75	87.5	3.44	62.0	2.44	113.5	4.47	62.0	2.44	156.5	6.16	103.0	4.05	163.5	6.44	98.0	3.87	224.5	8.84	103.8	4.09	259.5	10.22	136.0	5.35

The information on this sheet is Private and Confidential and is the property of Crane Process Flow Technologies Limited and must not be published directly or indirectly in any manner whatsoever without the written permission of the Company and must not be used in any way detrimental to their interests.  
© Crane Process Flow Technologies

**CRANE** Process Flow Technologies  
A Crane Co. Company

**Saunders**  
The Science Inside

Title  
SCHEDULE OF LEADING DIMENSIONS FOR DN20/0.75 WEIR  
'T' BODY (DN20/0.75 BRANCH) WITH MAINLINE BUTT WELD OD TUBE  
ENDS, BRANCH HYGIENIC CLAMP END FITTED WITH TOPWORKS OPTIONS

Drawn	R1	Date	28.06.16	UNCONTROLLED IN HARD COPY FORMAT
Checked	RND	Date	28.06.16	
First Angle Projection Method E		DO NOT SCALE	Drawing No. WEB-016-ASSY	Issue. 1