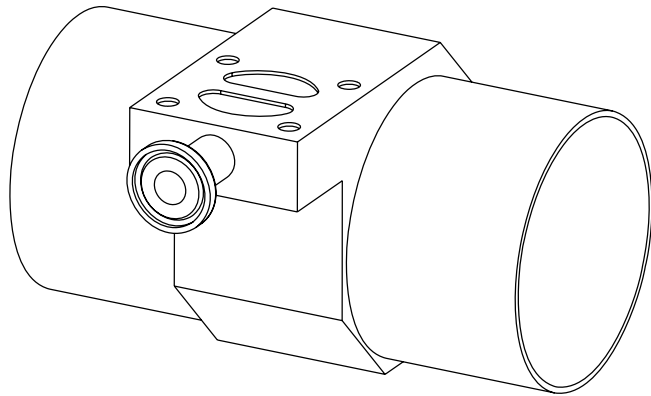
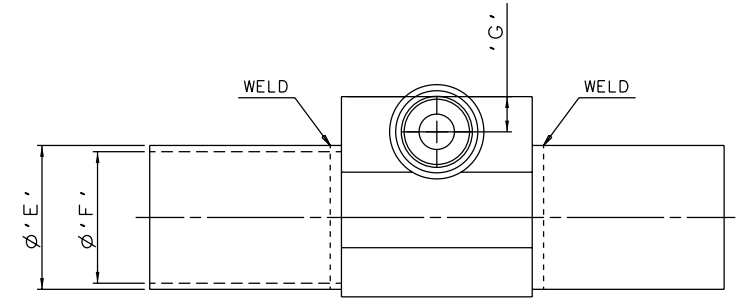
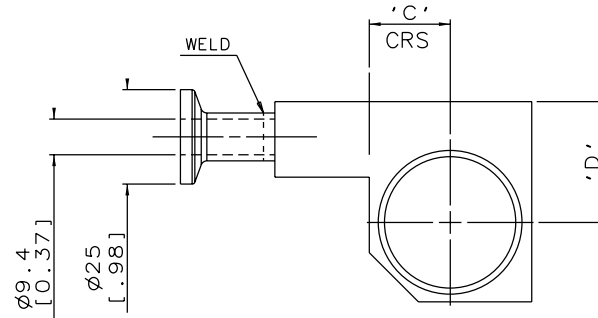
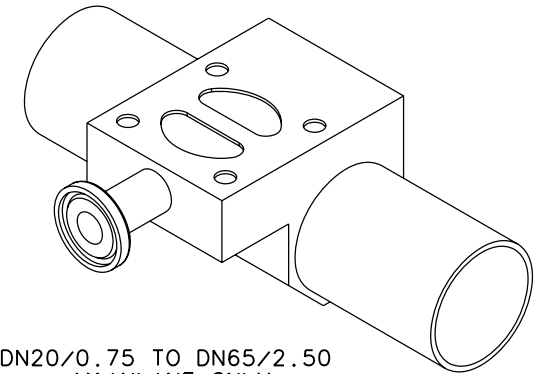
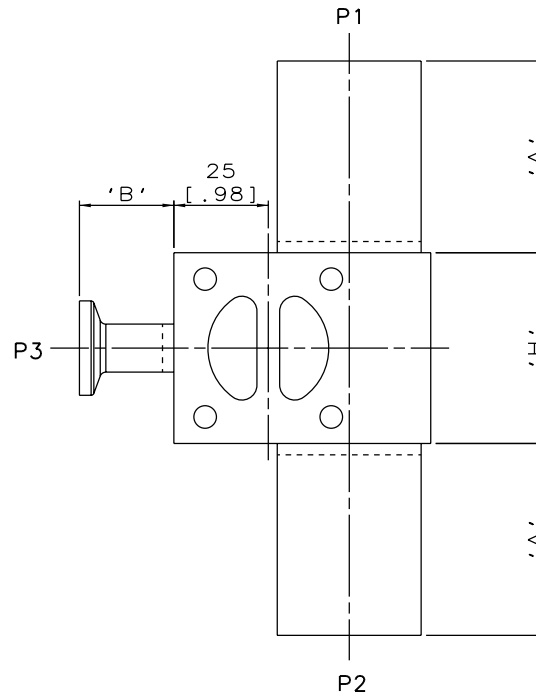


DN15/0.50  
MAINLINE ONLY



DN80/3.00 TO DN100/4.00  
MAINLINE ONLY



DN20/0.75 TO DN65/2.50  
MAINLINE ONLY

The information on this sheet is Private and Confidential and is the property of Crane Process Flow Technologies Limited and must not be published directly or indirectly in any manner whatsoever without the written permission of the Company and must not be used in any way detrimental to their interests.  
© Crane Process Flow Technologies

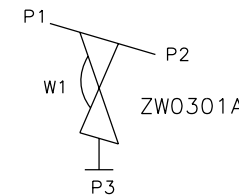
**CRANE** Process Flow Technologies  
A Crane Co. Company

**Saunders**  
The Science Inside

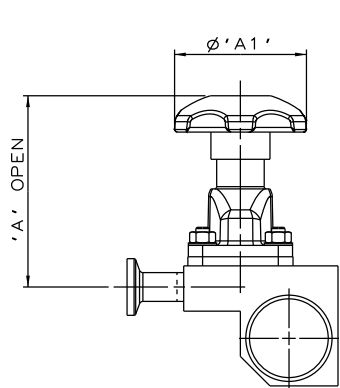
Title  
SCHEDULE OF LEADING DIMENSIONS FOR DN15/0.50  
WEIR 'T' BODY COMPLETE WITH :  
MAINLINE : BUTT WELD OD TUBE ENDS  
BRANCH : DN15/0.50 HYGIENIC CLAMP END

Drawn R1	Date 07.10.11	UNCONTROLLED IN HARD COPY FORMAT	
Checked RND	Date 08.03.12		
First Angle Projection Method E	DO NOT SCALE	Drawing No. WEB-015	Issue. 2

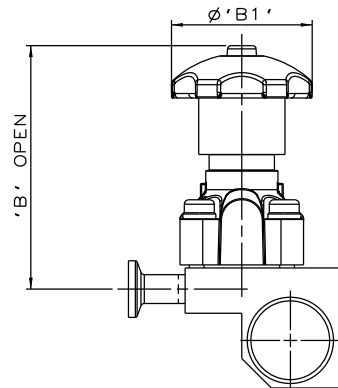
MAINLINE SIZE		A		B		C		D		ØE		ØF		G		H		BODY WEIGHT Kgs
mm	inch	mm	inch	mm	inch	mm	inch	mm	inch	mm	inch	mm	inch	mm	inch	mm	inch	
DN15	0.50	50.8	2.00	25.0	0.98	8.0	0.31	16.0	0.63	12.7	0.50	9.4	0.37	9.4	0.37	50.5	1.99	0.5
DN20	0.75	50.8	2.00	25.0	0.98	10.9	0.43	22.0	0.87	19.05	0.75	15.75	0.62	9.4	0.37	50.5	1.99	0.5
DN25	1.00	50.8	2.00	25.0	0.98	14.4	0.57	26.0	1.02	25.4	1.00	22.1	0.87	9.4	0.37	50.5	1.99	0.6
DN40	1.50	50.8	2.00	25.0	0.98	21.4	0.84	32.0	1.26	38.1	1.50	34.8	1.37	9.4	0.37	50.5	1.99	0.8
DN50	2.00	50.8	2.00	25.0	0.98	27.2	1.07	37.2	1.46	50.8	2.00	47.5	1.87	9.4	0.37	50.5	1.99	1.0
DN65	2.50	50.8	2.00	25.0	0.98	33.6	1.32	40.5	1.60	63.5	2.50	60.2	2.37	9.4	0.37	50.5	1.99	1.2
DN80	3.00	50.8	2.00	25.0	0.98	40.5	1.59	45.0	1.77	76.2	3.00	72.9	2.87	9.4	0.37	50.5	1.99	1.1
DN100	4.00	101.6	4.00	25.0	0.98	52.0	2.05	53.8	2.12	101.6	4.00	97.38	3.83	9.4	0.37	50.5	1.99	2.2



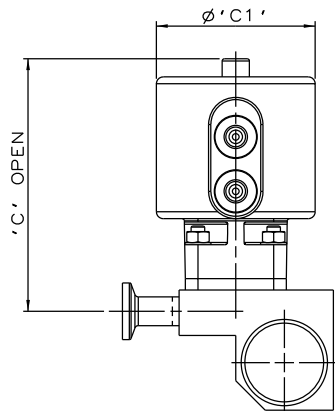
ORIENTATION AS  
PER P&ID DIAGRAM  
FOR OPTIMUM  
DRAINABILITY.



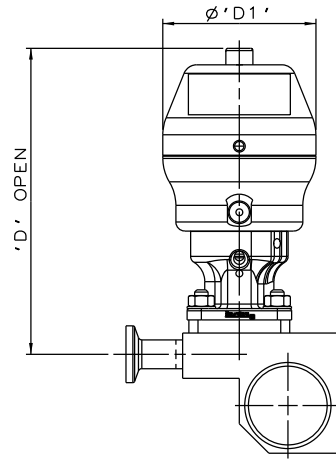
SS NON SEALED  
BONNET ASSEMBLY



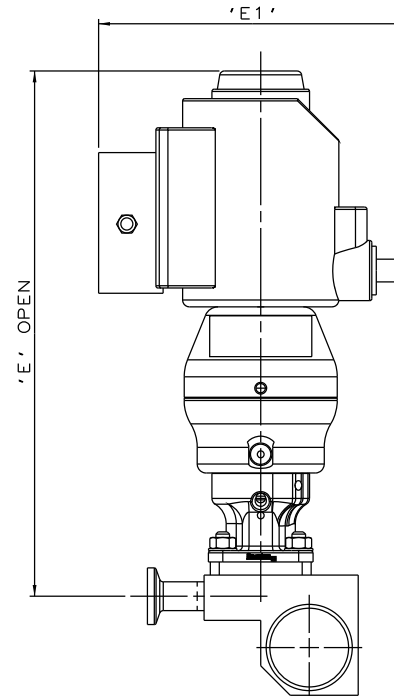
PES BONNET  
ASSEMBLY



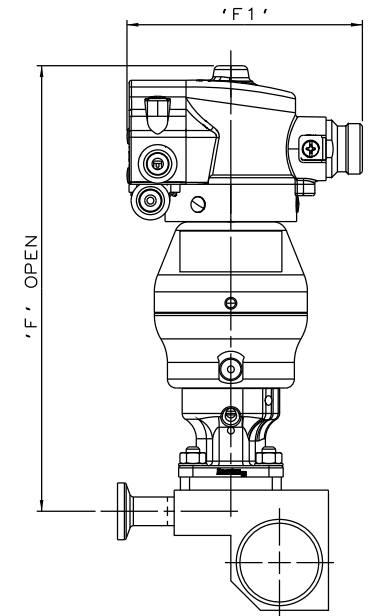
EC ACTUATOR  
(ALL MODES)



\*S360 ACTUATOR



\*S360 ACTUATOR  
WITH I-VUE SENSOR



\*S360 ACTUATOR  
WITH M-VUE SENSOR

The information on this sheet is Private and Confidential and is the property of Crane Process Flow Technologies Limited and must not be published directly or indirectly in any manner whatsoever without the written permission of the Company and must not be used in any way detrimental to their interests.  
© Crane Process Flow Technologies

**CRANE** Process Flow Technologies  
A Crane Co. Company

**Saunders**  
The Science Inside

Title  
SCHEDULE OF LEADING DIMENSIONS FOR DN15/0.50 WEIR  
\*T\*BODY (DN15/0.50 BRANCH) WITH MAINLINE BUTT WELD OD TUBE  
ENDS, BRANCH HYGIENIC CLAMP END FITTED WITH TOPWORKS OPTIONS

Drawn RI	Date 28.06.16	UNCONTROLLED IN HARD COPY FORMAT
Checked RND	Date 28.06.16	
First Angle Projection Method E	DO NOT SCALE	Drawing No. WEB-015-ASSY
		Issue. 1

\* DIMENSIONS SHOW MAXIMUM ENVELOPE FOR ALL MODES

BRANCH SIZE	A		A1		B		B1		C		C1		D		D1		E		E1		F		F1		
	mm	inch	mm	inch	mm	inch	mm	inch	mm	inch	mm	inch	mm	inch	mm	inch	mm	inch	mm	inch	mm	inch	mm	inch	
DN15	0.50	84.4	3.32	62.0	2.44	107.4	4.23	62.0	2.44	111.4	4.39	70.0	2.75	135.4	5.33	67.5	2.66	196.4	7.77	103.8	4.09	231.4	9.11	136.0	5.35