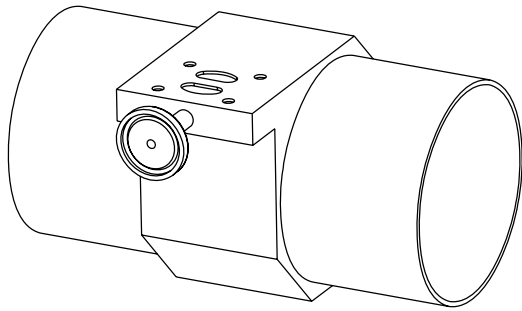
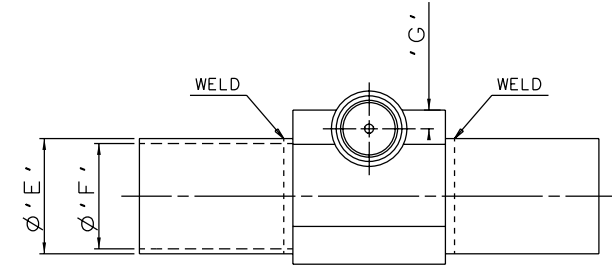
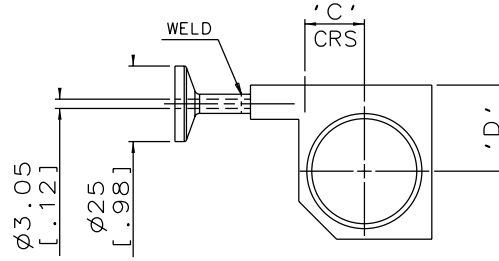
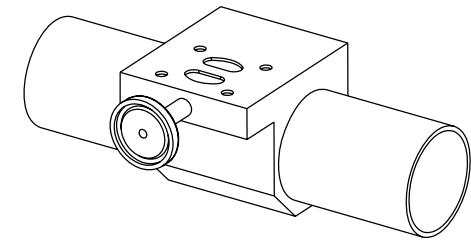
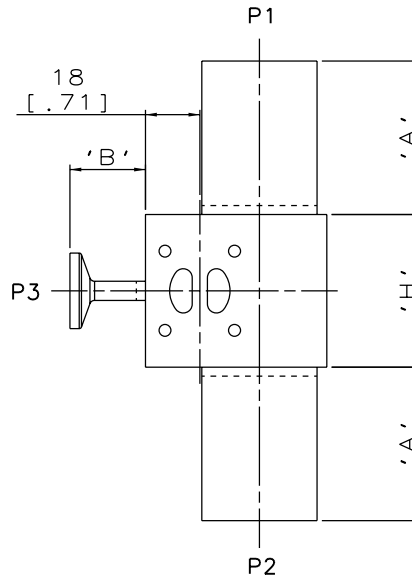


DN8/0.25 TO DN15/0.50  
MAINLINE ONLY

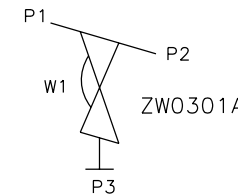


DN80/3.00 TO DN100/4.00  
MAINLINE ONLY



DN20/0.75 TO DN65/2.50  
MAINLINE ONLY

MAINLINE SIZE		A		B		C		D		ØE		ØF		G		H		BODY WEIGHT
mm	inch	mm	inch	mm	inch	mm	inch	mm	inch	mm	inch	mm	inch	mm	inch	mm	inch	Kgs
DN8	0.25	50.8	2.00	25.0	0.98	3.8	0.15	6.2	0.24	6.35	0.25	3.05	0.12	6.2	0.24	37.0	1.46	0.2
DN15	0.50	50.8	2.00	25.0	0.98	7.2	0.28	16.5	0.65	12.7	0.50	9.4	0.37	5.2	0.20	50.5	1.99	0.4
DN20	0.75	50.8	2.00	25.0	0.98	10.2	0.40	21.0	0.83	19.05	0.75	15.75	0.62	6.2	0.24	50.5	1.99	0.4
DN25	1.00	50.8	2.00	25.0	0.98	13.6	0.54	24.0	0.94	25.4	1.00	22.1	0.87	5.2	0.20	50.5	1.99	0.5
DN40	1.50	50.8	2.00	25.0	0.98	19.7	0.78	28.5	1.12	38.1	1.50	34.8	1.37	6.2	0.24	50.5	1.99	0.7
DN50	2.00	50.8	2.00	25.0	0.98	26.1	1.03	33.2	1.31	50.8	2.00	47.5	1.87	6.2	0.24	50.5	1.99	0.9
DN65	2.50	50.8	2.00	25.0	0.98	32.6	1.28	36.0	1.42	63.5	2.50	60.2	2.37	5.2	0.20	50.5	1.99	1.0
DN80	3.00	50.8	2.00	25.0	0.98	39.0	1.54	41.1	1.62	76.2	3.00	72.9	2.87	5.2	0.20	50.5	1.99	1.1
DN100	4.00	101.6	4.00	25.0	0.98	51.3	2.02	53.8	2.12	101.6	4.00	97.38	3.84	5.2	0.20	50.5	1.99	2.1



ORIENTATION AS  
PER P&ID DIAGRAM  
FOR OPTIMUM  
DRAINABILITY.

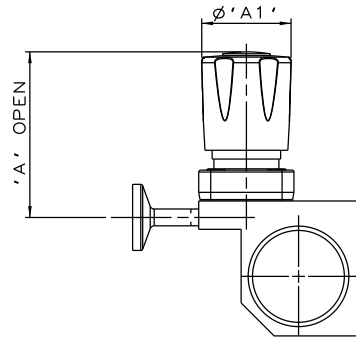
The information on this sheet is Private and Confidential and is the property of Crane Process Flow Technologies Limited and must not be published directly or indirectly in any manner whatsoever without the written permission of the Company and must not be used in any way detrimental to their interests.  
© Crane Process Flow Technologies

**CRANE** Process Flow Technologies  
A Crane Co. Company

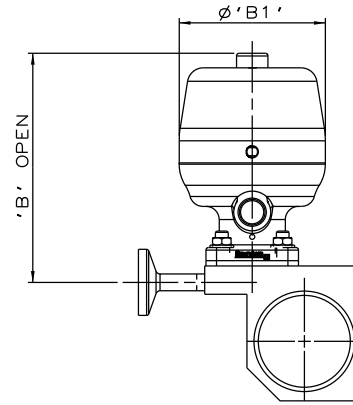
**Saunders**  
The Science Inside

Title  
SCHEDULE OF LEADING DIMENSIONS FOR DN8/0.25  
WEIR 'T' BODY COMPLETE WITH:  
MAINLINE : BUTT WELD OD TUBE ENDS  
BRANCH : DN8/0.25 HYGIENIC CLAMP END

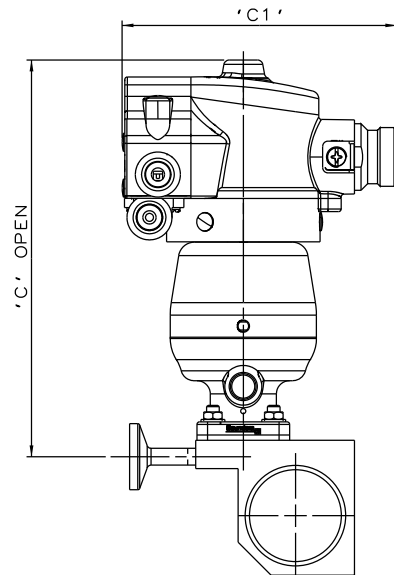
Drawn R1	Date 07.10.11	UNCONTROLLED IN HARD COPY FORMAT
Checked RND	Date 08.03.12	
First Angle Projection Method E	DO NOT SCALE	Drawing No. WEB-013
		Issue. 2



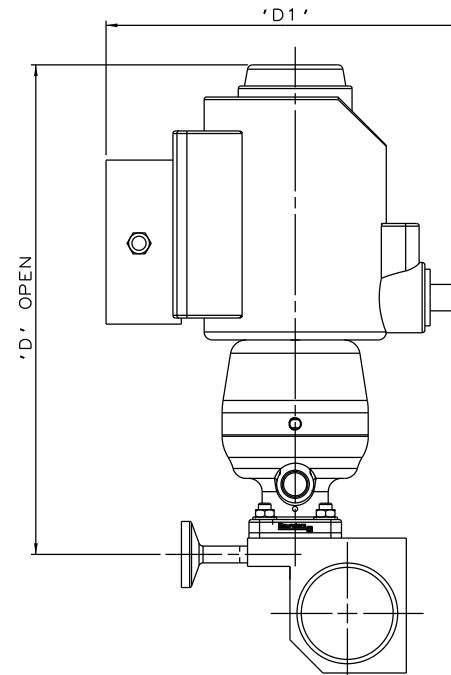
PURE PERFORMANCE  
BONNET ASSEMBLY



\*S360 ACTUATOR



\*S360 ACTUATOR  
WITH M-VUE SENSOR



\*S360 ACTUATOR  
WITH I-VUE SENSOR

The information on this sheet is Private and Confidential and is the property of Crane Process Flow Technologies Limited and must not be published directly or indirectly in any manner whatsoever without the written permission of the Company and must not be used in any way detrimental to their interests.  
© Crane Process Flow Technologies

**CRANE** Process Flow Technologies  
A Crane Co. Company

**Saunders**  
The Science Inside

Title  
SCHEDULE OF LEADING DIMENSIONS FOR DN8/0.25 WEIR  
'I'BODY (DN8/0.25 BRANCH) WITH MAINLINE BUTT WELD  
OD TUBE ENDS AND HYGIENIC CLAMP END BRANCH FITTED  
WITH TOPWORKS OPTIONS.

Drawn R1	Date 28.06.16	UNCONTROLLED IN HARD COPY FORMAT	
Checked RND	Date 28.06.16		
First Angle Projection Method E	DO NOT SCALE	Drawing No. WEB-013-ASSY	Issue. 1

\* DIMENSIONS SHOW MAXIMUM ENVELOPE FOR ALL MODES

BRANCH SIZE		A		A1		B		B1		C		C1		D		D1	
mm	inch	mm	inch	mm	inch	mm	inch	mm	inch	mm	inch	mm	inch	mm	inch	mm	inch
DN8	0.25	65.8	2.59	34.0	1.34	89.4	3.52	55.0	2.18	154.4	6.08	103.8	4.09	188.4	7.42	136.0	5.35