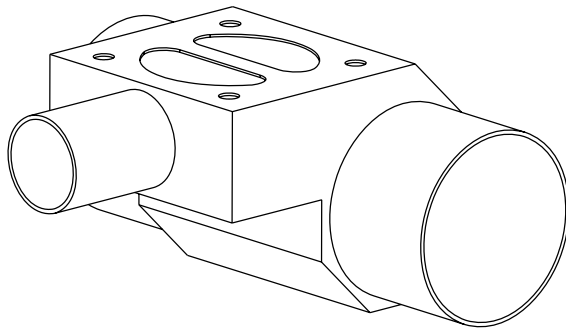
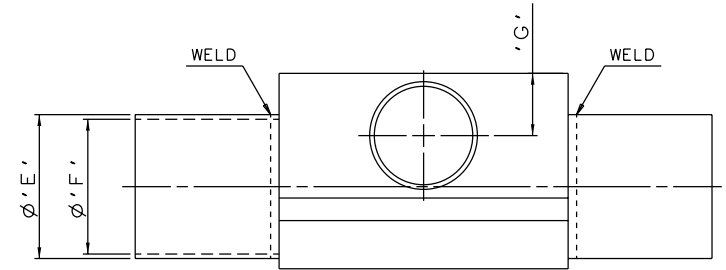
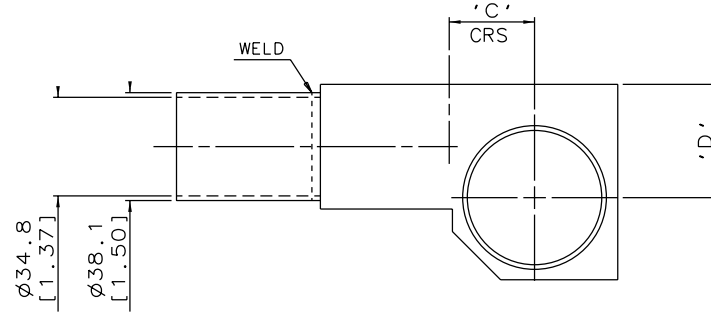
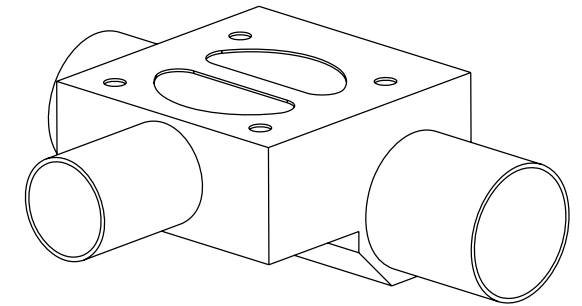
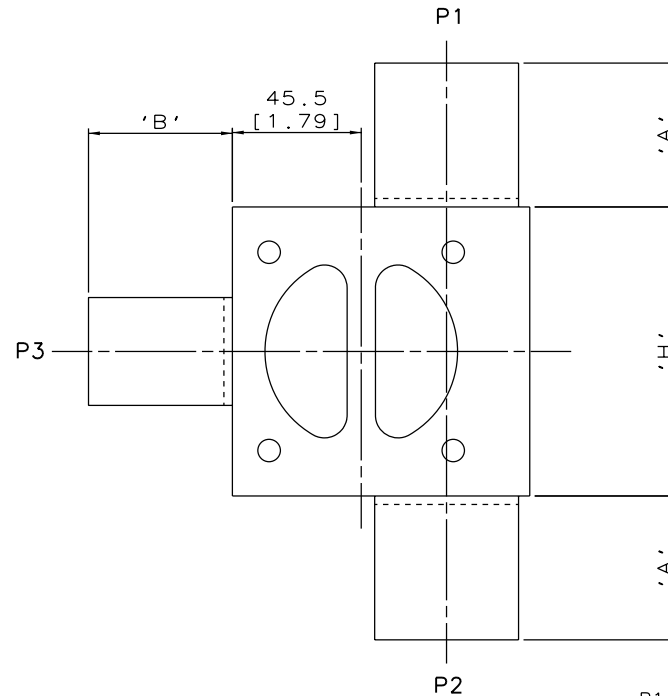


DN40/1.50
MAINLINE ONLY



DN80/3.00 TO DN100/4.00
MAINLINE ONLY



DN50/2.00 TO DN65/2.50
MAINLINE ONLY

The information on this sheet is Private and Confidential and is the property of Crane Process Flow Technologies Limited and must not be published directly or indirectly in any manner whatsoever without the written permission of the Company and must not be used in any way detrimental to their interests.
© Crane Process Flow Technologies

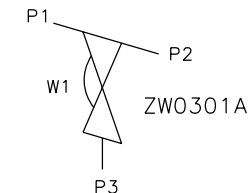
CRANE Process Flow Technologies
A Crane Co. Company

Saunders
The Science Inside

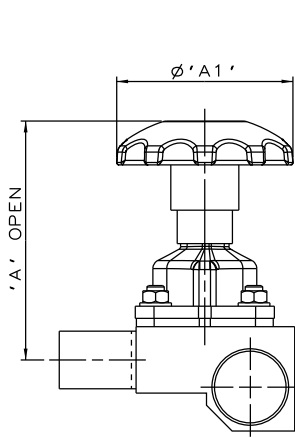
Title
SCHEDULE OF LEADING DIMENSIONS FOR DN40/1.50
WEIR 'T' BODY WITH BUTT WELD OD TUBE ENDS

Drawn RI	Date 29.09.11	UNCONTROLLED IN HARD COPY FORMAT
Checked RND	Date 21.03.12	
First Angle Projection Method E	DO NOT SCALE	Drawing No. WEB-009
		Issue. 2

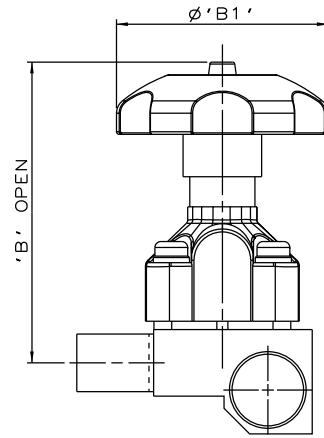
MAINLINE SIZE		A		B		C		D		øE		øF		G		H		BODY WEIGHT
mm	inch	mm	inch	mm	inch	mm	inch	mm	inch	mm	inch	mm	inch	mm	inch	mm	inch	Kgs
DN40	1.50	50.8	2.00	50.8	2.00	22.4	0.88	32.0	1.26	38.1	1.50	34.8	1.37	22.0	0.87	102.0	4.02	2.3
DN50	2.00	50.8	2.00	50.8	2.00	30.1	1.19	40.0	1.57	50.8	2.00	47.5	1.87	22.0	0.87	102.0	4.02	2.9
DN65	2.50	50.8	2.00	50.8	2.00	36.5	1.44	46.0	1.81	63.5	2.50	60.2	2.37	22.0	0.87	102.0	4.02	3.4
DN80	3.00	50.8	2.00	50.8	2.00	42.8	1.69	52.5	2.07	76.2	3.00	72.9	2.87	22.0	0.87	102.0	4.02	3.2
DN100	4.00	101.6	4.00	50.8	2.00	53.8	2.12	60.8	2.39	101.6	4.00	97.38	3.83	22.0	0.87	102.0	4.02	4.5



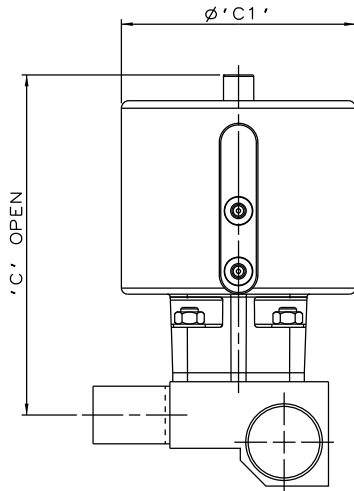
ORIENTATION AS
PER P&ID DIAGRAM
FOR OPTIMUM
DRAINABILITY.



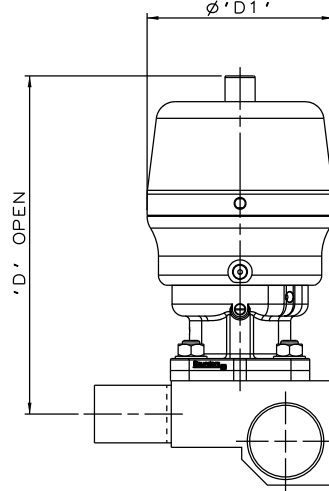
SS NON SEALED
BONNET ASSEMBLY



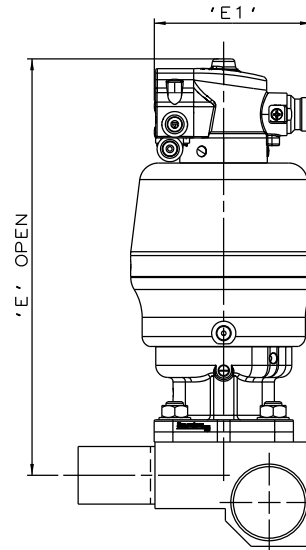
PES BONNET
ASSEMBLY



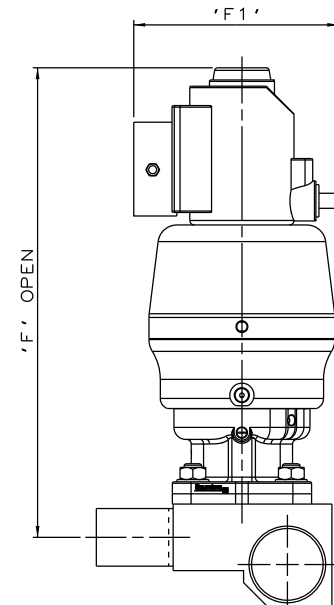
EC ACTUATOR
(ALL MODES)



*S360 ACTUATOR



*S360 ACTUATOR
WITH M-VUE SENSOR



*S360 ACTUATOR
WITH I-VUE SENSOR

*DIMENSIONS SHOW MAXIMUM ENVELOPE FOR ALL MODES

BRANCH SIZE		A		A1		B		B1		C		C1		D		D1		E		E1		F		F1	
mm	inch	mm	inch	mm	inch	mm	inch	mm	inch	mm	inch	mm	inch	mm	inch	mm	inch	mm	inch	mm	inch	mm	inch	mm	inch
DN40	1.50	158.0	6.22	120.0	4.72	204.2	8.04	199.0	7.83	225.0	8.85	155.0	6.10	224.0	8.82	123.0	4.84	275.0	10.83	103.8	4.09	310.0	12.20	136.0	5.35

The information on this sheet is Private and Confidential and is the property of Crane Process Flow Technologies Limited and must not be published directly or indirectly in any manner whatsoever without the written permission of the Company and must not be used in any way detrimental to their interests.
© Crane Process Flow Technologies

CRANE Process Flow Technologies
A Crane Co. Company

Saunders
The Science Inside

Title
SCHEDULE OF LEADING DIMENSIONS FOR DN40/1.50
WEIR 'T' BODY WITH BUTT WELD OD TUBE ENDS.
FITTED WITH TOPWORKS OPTIONS

Drawn JRD	Date 15.09.16	UNCONTROLLED IN HARD COPY FORMAT	
Checked RND	Date 15.09.16		
First Angle Projection Method E	DO NOT SCALE	Drawing No. WEB-009-ASSY	Issue. 1