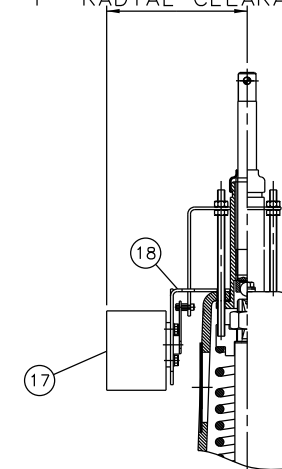


EMERGENCY HANDWHEEL
(OPTIONAL)

'F' RADIAL CLEARANCE



007 SWITCHBOX
(OPTIONAL)

Item	Component	Material
1	HANWHEEL SPINDLE	MILD STEEL
2	UPPER SPRING PLATE	MILD STEEL
3	SPRINGS	STEEL
4	COVER	SILICON ALUM.
5	CYLINDER O RING	NITRILE
6	DIAPHRAGM PLATE	FORGED STEEL
7	OPERATING DIAPHRAGM	RUBBER
8	MASTER SPINDLE	STAINLESS STEEL
9	BONNET	CAST IRON
10	COMPRESSOR	CAST IRON
11	LINE DIAPHRAGM	RUBBER
12	SPINDLE ATTACHMENT	STAINLESS STEEL
13	LOWER CYLINDER	SILICON ALUM.
14	UPPER CYLINDER	SILICON ALUM.
15	HANDWHEEL	CAST IRON
16	BODY	CAST IRON
		SG IRON
17	'007' SWITCHBOX	
18	MOUNTING BRACKET	STAINLESS STEEL

Size(DN)	A	B	C	D	E	F
100	955	305	350	977	923	159
125	935	356	400	957	889	159
150	1034	406	480	1056	991	159

The information on this sheet is Private and Confidential and is the property of Crane Process Flow Technologies Limited and must not be published directly or indirectly in any manner whatsoever without the written permission of the Company and must not be used in any way detrimental to their interests.
© Crane Process Flow Technologies

CRANE Process Flow Technologies
A Crane Co. Company

Saunders
The Science Inside

Title

GENERAL ARRANGEMENT OF 'KB' TYPE ES72 SPRING
OPENING MODULAR ACTUATOR (F8000) COMPLETE
WITH OPTIONS FITTED ON UNLINED FLANGED BODY

Drawn NAW Date 21.10.14

Checked RND Date 21.10.14

UNCONTROLLED IN
HARD COPY FORMAT

First Angle
Projection
Method E



DO NOT
SCALE
Drawing No.
KB-ES72-UNLINED
Issue.
1