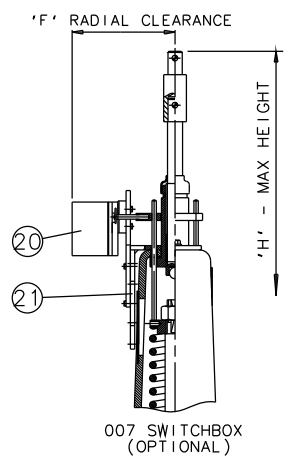
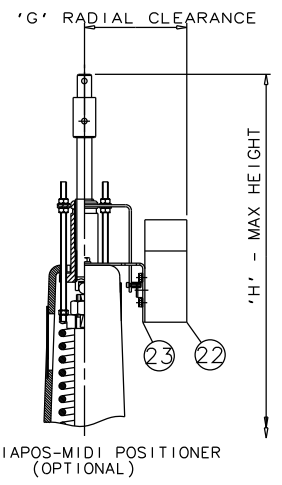


EMERGENCY HANDWHEEL (OPTIONAL)



007 SWITCHBOX (OPTIONAL)



VIAPOS-MIDI POSITIONER (OPTIONAL)

Item	Component	Material
1	HANDWHEEL SPINDLE	MILD STEEL
2	UPPER SPRING PLATE	MILD STEEL
3	SPRING	MILD STEEL
4	SPRING COVER	SILICON ALUM.
5	BUSH/CYL. 'O' RING	RUBBER
6	DIAPHRAGM PLATE	FORGED STEEL
7	OPERATING DIAPHRAGM	RUBBER
8	MASTER SPINDLE	STAINLESS STEEL
9	BONNET	STEEL
10	COMPRESSOR	STAINLESS STEEL
11	LINE DIAPHRAGM	RUBBER
12	SPINDLE ATTACHEMENT	STAINLESS STEEL
13	UPPER CYLINDER	SILICON ALUM.
14	LOWER CYLINDER	SILICON ALUM.
15	HANDWHEEL	STEEL
16	BODY	CAST IRON STAINLESS STEEL GUNMETAL
17	LOWER SPRING PLATE	MILD STEEL
18	FAIRCHILD REGULATOR	
19	MOUNTING BRACKET	STAINLESS STEEL
20	007 SWITCHBOX	
21	MOUNTING BRACKET	STAINLESS STEEL
22	VIAPOS POSITIONER	
23	MOUNTING BRACKET	STAINLESS STEEL

Size(DN)	A	B	C	D	E	F	G
80	834	254	310	856	807	250	892
100	858	305	350	880	828	250	916
125	838	356	400	860	798	250	896

The information on this sheet is Private and Confidential and is the property of Crane Process Flow Technologies Limited and must not be published directly or indirectly in any manner whatsoever without the written permission of the Company and must not be used in any way detrimental to their interests.
 © Crane Process Flow Technologies



Title
 GENERAL ARRANGEMENT OF 'KB' TYPE ES71 SPRING OPENING MODULAR ACTUATOR (E8000) COMPLETE WITH OPTIONS FITTED ON UNLINED FLANGED BODY.

Drawn R1	Date 31.07.14	UNCONTROLLED IN HARD COPY FORMAT	
Checked RND	Date 31.07.14		
First Angle Projection Method E	DO NOT SCALE	Drawing No. KB-ES71-UNLINED	Issue. 1