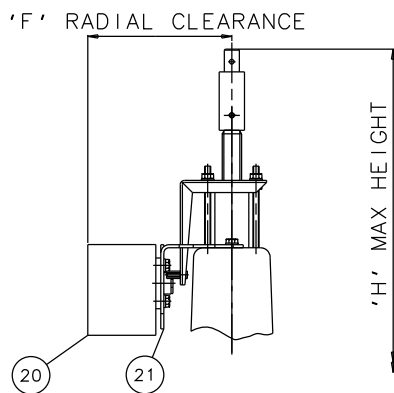
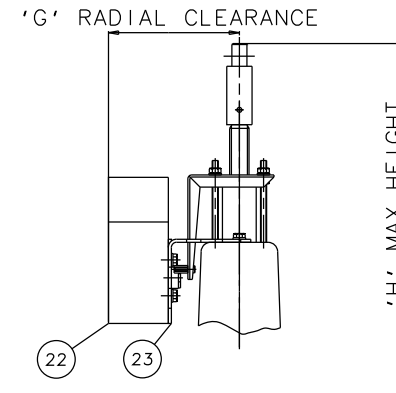


EMERGENCY HANDWHEEL
(OPTIONAL)



'007' SWITCHBOX
(OPTIONAL)



VIAPOS-MIDI POSITIONER
(OPTIONAL)

Item	Component	Material
1	HANDWHEEL SPINDLE	MILD STEEL
2	UPPER SPRING PLATE	MILD STEEL
3	SPRING	MILD STEEL
4	SPRING COVER	SILICON ALUM.
5	BUSH/CYL. 'O' RING	RUBBER
6	DIAPHRAGM PLATE	FORGED STEEL
7	OPERATING DIAPHRAGM	RUBBER
8	MASTER SPINDLE	STAINLESS STEEL
9	BONNET	STEEL
10	COMPRESSOR	STAINLESS STEEL
11	LINE DIAPHRAGM	RUBBER/PTFE
12	SPINDLE ATTACHMENT	STAINLESS STEEL
13	UPPER CYLINDER	SILICON ALUM.
14	LOWER CYLINDER	SILICON ALUM.
15	HANDWHEEL	STEEL
16	BODY	CAST IRON STAINLESS STEEL GUNMETAL
17	LOWER SPRING PLATE	MILD STEEL
18	FAIRCHILD REGULATOR	
19	MOUNTING BRACKET	STAINLESS STEEL
20	'007' SWITCHBOX	
21	MOUNTING BRACKET	STAINLESS STEEL
22	VIAPOS MIDI POSITIONER	
23	MOUNTING BRACKET	STAINLESS STEEL

Size(DN)	A	B	C	D	E	F	G	H
50	795	190	230	826	779	142	152	849
65	814	216	290	845	799	142	152	866
80	841	254	310	872	822	142	152	897
100	859	305	350	890	841	142	152	922

The information on this sheet is Private and Confidential and is the property of Crane Process Flow Technologies Limited and must not be published directly or indirectly in any manner whatsoever without the written permission of the Company and must not be used in any way detrimental to their interests.
© Crane Process Flow Technologies

CRANE Process Flow Technologies
A Crane Co. Company

Saunders
The Science Inside

Title
GENERAL ARRANGEMENT OF 'KB' TYPE ES70 SPRING
OPENING MODULAR ACTUATOR (D8000) COMPLETE
WITH OPTIONS FITTED ON UNLINED FLANGED BODY

Drawn	JRD	Date	23.09.14	UNCONTROLLED IN HARD COPY FORMAT
Checked	RND	Date	23.09.14	
First Angle Projection Method E		DO NOT SCALE	Drawing No.	Issue.
			KB-ES70-UNLINED	1