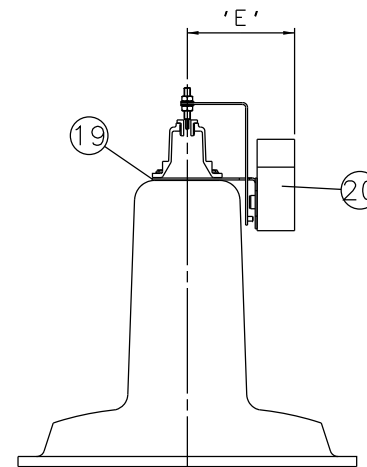
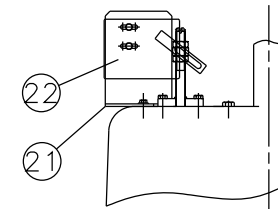


EMERGENCY HANDWHEEL
(OPTIONAL)



PMV POSITIONER
(OPTIONAL)



'007' SWITCHBOX
(OPTIONAL)

Item	Component	Material						
1	ADJUSTING SCREW	MILD STEEL						
2	SPRING COVER	SILICON ALUMINIUM						
3	INDICATOR ROD	STAINLESS STEEL						
4	LIFTING ROD	MILD STEEL						
5	UPPER SPRING PLATE	S.G. IRON						
6	SPRING	SPRING STEEL						
7	LOWER SPRING PLATE	S.G. IRON						
8	DIAPHRAGM PLATE	CAST IRON						
9	LOWER CYLINDER O RING	RUBBER						
10	MASTER SPINDLE	STAINLESS STEEL						
11	BONNET	CAST IRON						
12	SPINDLE ATTACHMENT	STAINLESS STEEL						
13	COMPRESSOR	CAST IRON						
14	LINE DIAPHRAGM	RUBBER						
15	BODY	CAST IRON STAINLESS STEEL GUNMETAL						
16	COVER	SILICON ALUM.						
17	OPERATING DIAPHRAGM	RUBBER						
18	LOWER CYLINDER	SILICON ALUM.						
19	MOUNTING BRACKET	STAINLESS STEEL						
20	VIAPOS MIDI POSITIONER		Size (DN)	A	B	C	D	E
21	MOUNTING BRACKET	STAINLESS STEEL	100	1076	305	350	1218	204
22	'007' SWITCHBOX		125	1089	356	400	1231	204
23	HANDWHEEL	CAST IRON	150	1155	406	480	1297	204

The information on this sheet is Private and Confidential and is the property of Crane Process Flow Technologies Limited and must not be published directly or indirectly in any manner whatsoever without the written permission of the Company and must not be used in any way detrimental to their interests.
© Crane Process Flow Technologies

CRANE	Process Flow Technologies A Crane Co. Company	Saunders The Science Inside	
Title GENERAL ARRANGEMENT OF 'KB' TYPE ES65 SPRING CLOSING MODULAR ACTUATOR (F8400) COMPLETE WITH OPTIONS FITTED ON UNLINED FLANGED BODY			
Drawn JRD	Date 16.09.14	UNCONTROLLED IN HARD COPY FORMAT	
Checked RND	Date 16.09.14		
First Angle Projection Method E	DO NOT SCALE	Drawing No. KB-ES65-UNLINED	Issue. 1