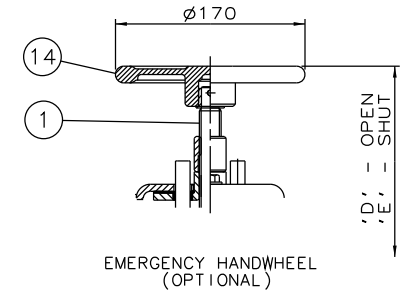
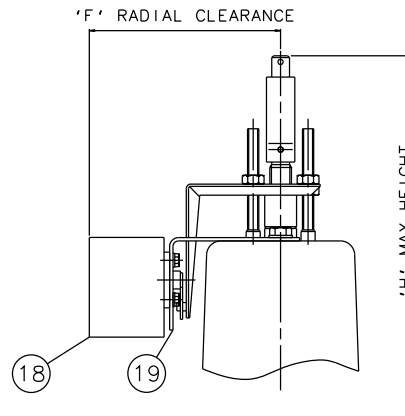


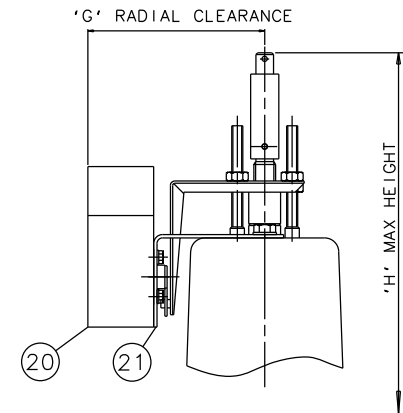
FAIRCHILD MODEL N° 63A
(OPTIONAL)



EMERGENCY HANDWHEEL
(OPTIONAL)



'007' SWITCHBOX
(OPTIONAL)



VIAPOS-MIDI POSITIONER
(OPTIONAL)

Item	Component	Material
1	HANDWHEEL SPINDLE	MILD STEEL
2	UPPER SPRING PLATE	MILD STEEL
3	SPRINGS	STEEL
4	COVER	SILICON ALUM.
5	CYLINDER O RING	NITRILE
6	DIAPHRAGM PLATE	FORGED STEEL
7	OPERATING DIAPHRAGM	RUBBER
8	MASTER SPINDLE	STAINLESS STEEL
9	BONNET	CAST IRON
10	COMPRESSOR	CAST IRON
11	LINE DIAPHRAGM	RUBBER/PTFE
12	SPINDLE ATTACHMENT	STAINLESS STEEL
13	LOWER CYLINDER	SILICON ALUM.
14	HANDWHEEL	CAST IRON
15	BODY	STAINLESS STEEL
		GUNMETAL
16	FAIRCHILD REGULATOR	
17	MOUNTING BRACKET	STAINLESS STEEL
18	'007' SWITCHBOX	
19	MOUNTING BRACKET	STAINLESS STEEL
20	VIAPOS MIDI POSITIONER	
21	MOUNTING BRACKET	STAINLESS STEEL

Size(DN)	A	B	C	D	E	F	G	H
25	517	127	160	535	510	172	159	614
32	517	146*	180	535	510	172	159	614
40	517	159	200	535	510	172	159	614
50	522	190	230	540	502	172	159	619
65	546	216	290	564	528	172	159	643

*150mm FOR CAST IRON BODIES WITH PN16 FLANGES

The information on this sheet is Private and Confidential and is the property of Crane Process Flow Technologies Limited and must not be published directly or indirectly in any manner whatsoever without the written permission of the Company and must not be used in any way detrimental to their interests.
© Crane Process Flow Technologies

CRANE Process Flow Technologies A Crane Co. Company	Saunders The Science Inside
---------------------------------------------------------------	---------------------------------------

Title			
GENERAL ARRANGEMENT OF 'KB' TYPE ES62 SPRING CLOSING MODULAR ACTUATOR (C8400) COMPLETE WITH OPTIONS FITTED ON UNLINED FLANGED BODY			
Drawn	JRD	Date	16.09.14
Checked	RND	Date	16.09.14
UNCONTROLLED IN HARD COPY FORMAT			
First Angle Projection	Method E	DO NOT SCALE	Drawing No.
KB-ES62-UNLINED		Issue.	1