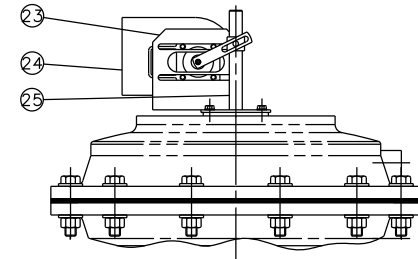
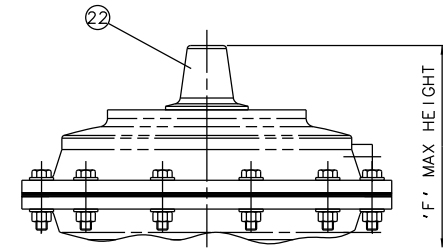


EMERGENCY HANDWHEEL
(OPTIONAL)



'007' SWITCHBOX
(OPTIONAL)

Item	Component	Material	Lining
1	UPPER CYLINDER	SILICON ALUM.	
2	UPPER DIAPHRAGM PLATE	MILD STEEL	
3	LOWER DIAPHRAGM PLATE	MILD STEEL	
4	OPERATING DIAPHRAGM	RUBBER	
5	LOWER CYLINDER	SILICON ALUM.	
6	MASTER SPINDLE	STAINLESS STEEL	
7	CYLINDER 'O' RING	NITRILE	
8	SPINDLE ATTACHMENT	STAINLESS STEEL	
9	BONNET	CAST IRON	
10	COMPRESSOR	CAST IRON	
11	LINE DIAPHRAGM	RUBBER	
12	BODY	CAST IRON	HARD RUBBER
			SOFT RUBBER
		SG IRON	BUTYL RUBBER
			NEOPRENE RUBBER
13	HANDWHEEL	CAST IRON	
14	HANDWHEEL SPINDLE	MILD STEEL	
15	SPINDLE BUSH	MILD STEEL	
16	INDICATOR ROD	MILD STEEL	
17	COVER	SILICON ALUM.	
18	UPPER SPRING PLATE	MILD STEEL	
19	GUIDE ROD	MILD STEEL	
20	SEALING PLATE	MILD STEEL	
21	SEALING PLT. 'O' RING	RUBBER	
22	INDICATOR COVER	POLAMIDE	
23	MOUNTING BRACKET	STAINLESS STEEL	
24	'007' SWITCHBOX		
25	LIFTING ROD	STAINLESS STEEL	

Size(DN)	A	B	C	D	E	F
80	399	254	310	884	846	473
100	424	305	350	908	859	498
125	404	356	400	888	824	478
150	503	406	480	987	925	577

The information on this sheet is Private and Confidential and is the property of Crane Process Flow Technologies Limited and must not be published directly or indirectly in any manner whatsoever without the written permission of the Company and must not be used in any way detrimental to their interests.
© Crane Process Flow Technologies

CRANE	Process Flow Technologies A Crane Co. Company	Saunders The Science Inside
--------------	--	---------------------------------------

Title
GENERAL ARRANGEMENT OF 'KB' TYPE ES57 DOUBLE ACTING ACTUATOR (E8200) COMPLETE WITH OPTIONS FITTED ON RUBBER LINED FLANGED BODY

Drawn JRD	Date 29.09.14	UNCONTROLLED IN HARD COPY FORMAT
Checked RND	Date 29.09.14	

First Angle Projection Method E	DO NOT SCALE	Drawing No. KB-ES57-RUBBER	Issue. 1
---------------------------------	--------------	-------------------------------	-------------