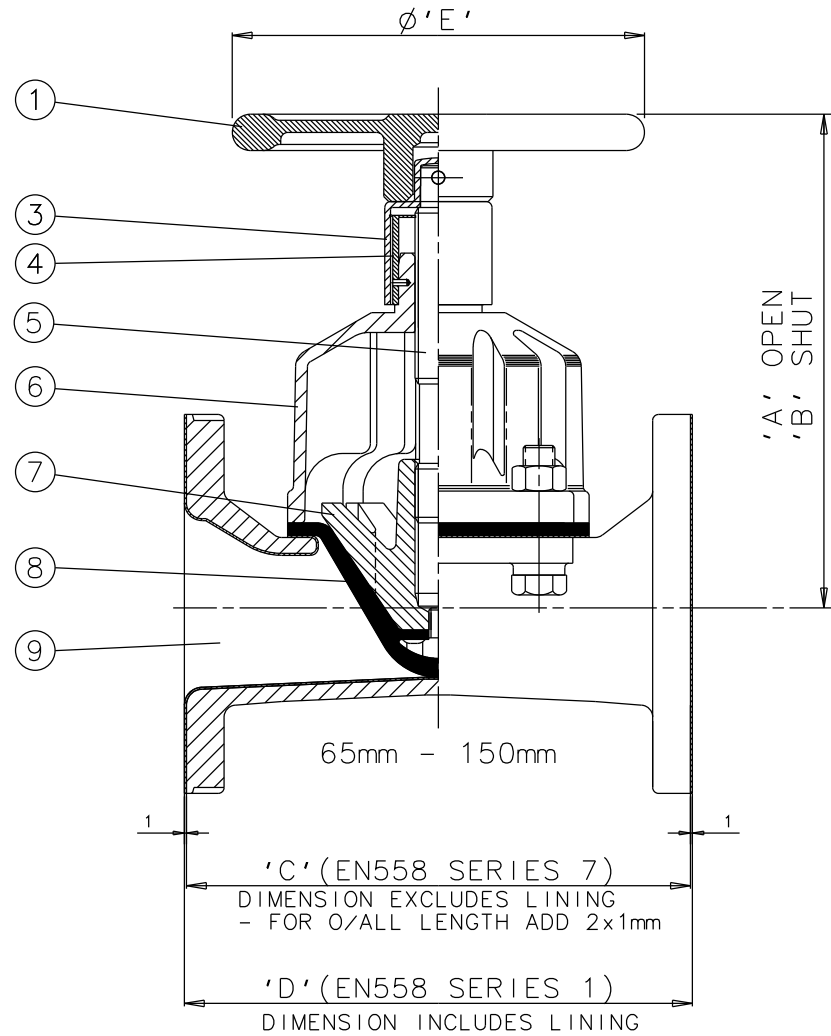


15mm - 50mm



Item	Component	Material	Lining	Where Used	Size(DN)	A	B	C	D	E
					15	106	98	108	130	80
1	HANDWHEEL	CAST IRON	GLASS	15-50	25	166	160	127	160	120
2		ABS			32	166	160	146	180	120
3	HANDWHEEL BOSS	POLYPROPYLENE			40	166	160	159	200	120
4	BONNET SLEEVE	POLYPROPYLENE			50	177	157	190	230	120
5	SPINDLE	MILD STEEL			65	235	211	216	290	170
6	BONNET	CAST IRON			80	271	239	254	310	230
7	COMPRESSOR	CAST IRON			100	314	278	305	350	280
8	LINE DIAPHRAGM	RUBBER			125	336	294	356	400	280
9	BODY	CAST IRON			150	436	380	406	480	368

The information on this sheet is Private and Confidential and is the property of Crane Process Flow Technologies Limited and must not be published directly or indirectly in any manner whatsoever without the written permission of the Company and must not be used in any way detrimental to their interests.
© Crane Process Flow Technologies

CRANE Process Flow Technologies
A Crane Co. Company

Saunders
The Science Inside

Title
GENERAL ARRANGEMENT OF 'KB' TYPE RISING
HANDWHEEL INDICATOR BONNET ASSEMBLY (9000)
FITTED ON GLASS LINED FLANGED BODY

Drawn RI Date 30.06.14

UNCONTROLLED IN
HARD COPY FORMAT

Checked RND Date 30.06.14

First Angle
Projection Method E

DO
NOT
SCALE

Drawing No.
KB-CI-RHI-GLASS

Issue.
1