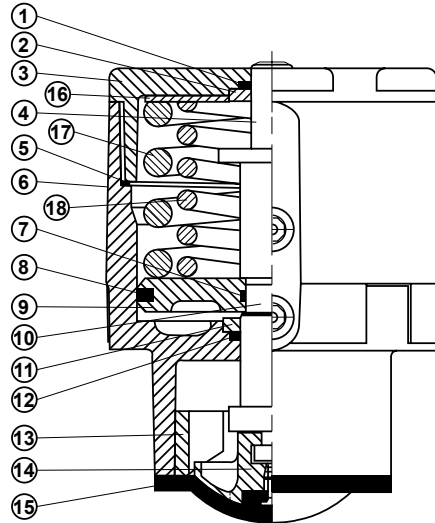
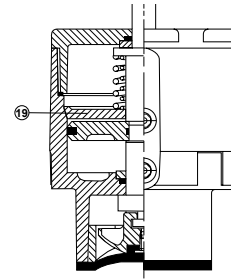


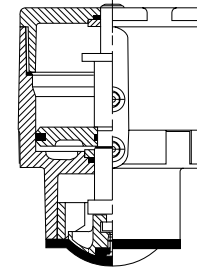
www.saundersdrawings.com



Spring Close EC Actuator



Spring Open EC Actuator



Double Acting EC Actuator

Item	Component	Spring Close	Spring Open	Double Acting
1	Indicator Seal	Fluoroelastomer		
2	Cap Washer	PES (DN8-25) / IXEF (DN40-50)		
3	Cap	PES (DN8-25) / IXEF (DN40-50)		
4	Indicator	IXEF		
5	Bonnet/Cap O-ring	Nitrile		
6	Bonnet	PES		
7	Piston Inner Seal	Nitrile		
8	Piston Outer Seal	Fluoroelastomer		
9	Piston	PES (DN8-25) / IXEF (DN40-50)		
10	Spindle	PES		
11	Bonnet Washer	PES		
12	Spindle Seal	Fluoroelastomer		
13	Bonnet Insert	PES (DN40-50)		
14	Compressor	Silicon Aluminum (DN15-50) Mild Steel (DN8-50) Mazak (DN8)		
15	Line Diaphragm	Rubber/PTFE with Rubber Backing		
16	Loading Plate	Mild Steel (DN40-50)	-	-
17	Outer Spring	Steel	Steel	-
18	Inner Spring	Steel (DN50 only)	Steel (DN50 only)	-
19	Spring Support Plate	-	PES	-

www.cranepharmasolutions.com

CRANE ChemPharma Flow Solutions, Saunders[®] • 9860 Johnson Road
Montgomery, Texas USA 77316 • Tel.: +1 936 588 8360 • Fax: +1 936 588 8302

IMPORTANT: CRANE Co. and its subsidiaries are not responsible for the accuracy, compliance, and legality of material contained in this datasheet offered in print, on the company websites, or via any external links, or third party sites.