

 **STOCKHAM**<sup>®</sup>

**brands you trust.**



**Lead Free GGC Valves**

**CRANE**<sup>®</sup>

Crane ChemPharma & Energy

[www.cranecpe.com](http://www.cranecpe.com)

## LEAD FREE GGC VALVES

### Features & Benefits

- 1 NSF 61 Certified brass Material, fully compliant with national legislation.
- 2 Quick delivery, in stock and offered for shipment within 3 days.
- 3 Meets Lead Free Safe Water Drinking requirements.

### Potable Water Usage

Stockham's Lead Free GGC Valves are certified for potable water applications to meet NSF-61 Annex G, in accordance with the lead free Safe Water Drinking Act. NSF-61 Annex G is equivalent to NSF 372. The chemical composition of major wetted parts is given below.

### MSS SP-80 Conformance

Stockham's Lead Free GGC Valves are designed to MSS SP-80 for workmanship and dimensionality only. MSS SP-80 does not cover any materials that meet the requirements of NSF-61 Annex G. We have designed these valves for a Cold Working Pressure of 200 PSI, at 100 °F.



IAPMO Tested and Certified  
NSF/ANSI 61 Annex G  
Lead Free Compliant  
For Potable Water Use

### Material Properties:

ASTM Designation	Copper	Lead	Tin	Iron	Zinc
B171-C46500	59.0-62.0	0.20 (Max)	0.5-1.0	0.10 (Max)	Remainder

### Tag Drawing:



# LEAD FREE GGC VALVES

## Brass Body, Threaded Bonnet, Solid Disc, Threaded End connections LFB-103

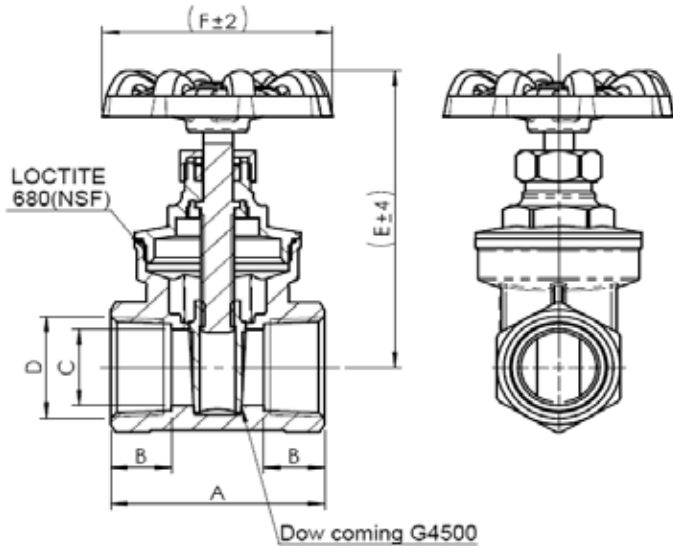
200 CWP @ 100° F

Dimensions and workmanship conform to MSS SP-80

Designed in Accordance with the NSF-61-8



IAPMO Tested and Certified  
NSF/ANSI 61 Annex G  
Lead Free Compliant  
For Potable Water Use



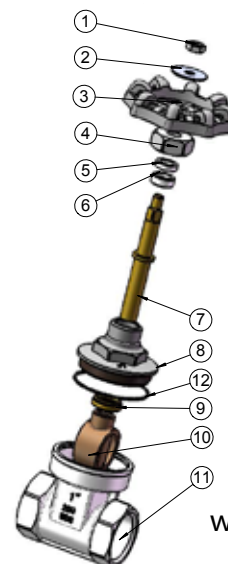
### Materials of Construction:

No.	Description	Material
1	Hex Nut	ASTM-B283-C37700
2	Name Plate	Aluminum Alloy
3	Handwheel	Cast Iron
4	Hex Nut	ASTM B283-C37700
5	Packing Gland	ASTM B283-C3770
6	Packing	PTFE
7	Stem	ASTM B171-C46500
8	Bonnet	ASTM B171-C46500
9	Packing Nut	ASTM B171-C46500
10	Disc	ASTM B171-C46500
11	Body	ASTM B171-C46500
12	Washer	PTFE

### Dimensions & Weights

Inches (millimeters) - Pounds (kilograms)

Gate NPT End								
Size	Units	T	A	B	C	D	E	F
1/2	in	0.07	1.93	0.59	0.55	1/2 NPT	2.93	2.13
	mm	1.8	44.2	12.7	14		74.5	54
3/4	in	0.07	2.05	0.61	0.77	3/4 NPT	3.39	2.32
	mm	1.8	58.9	19.05	19.5		86	59
1	in	0.08	2.36	0.73	0.98	1 NPT	3.90	2.83
	mm	2	69.8	23.2	25		99	72
1 1/4	in	0.09	2.52	0.75	1.26	1 1/4 NPT	4.49	3.07
	mm	2.2	75.8	24.7	32		114	78
1 1/2	in	0.09	2.60	0.75	1.50	1 1/2 NPT	5.12	3.46
	mm	2.3	83.8	27.7	38		130	88
2	in	0.10	2.80	0.79	1.89	2 NPT	5.96	3.86
	mm	2.5	100.8	34.1	48		151.5	98



# LEAD FREE GGC VALVES

**Brass Body, Threaded Bonnet, Solid Disc, Solder End connections LFB-104**

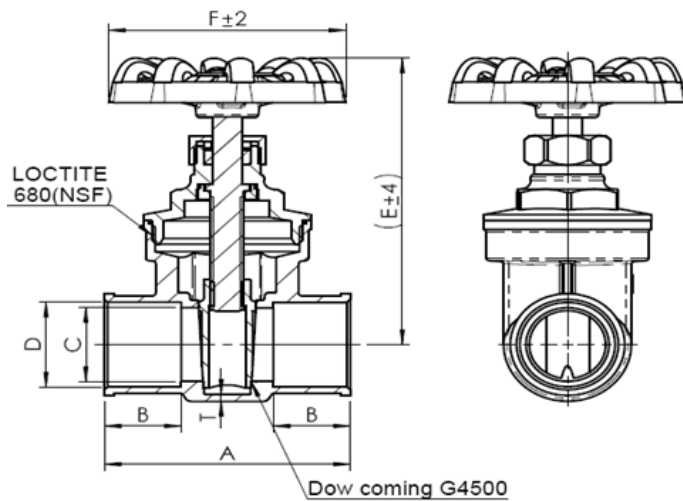
**200 CWP @ 100° F**

Dimensions and workmanship conform to MSS SP-80

Designed in Accordance with the NSF-61-8



IAPMO Tested and Certified  
NSF/ANSI 61 Annex G  
Lead Free Compliant  
For Potable Water Use



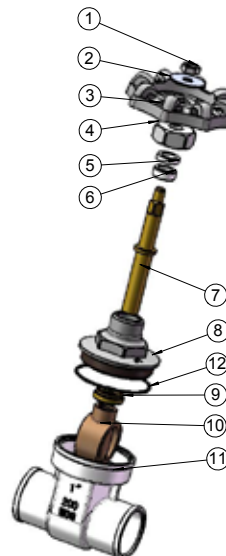
## Materials of Construction:

No.	Description	Material
1	Hex Nut	ASTM-B283-C37700
2	Name Plate	Aluminum Alloy
3	Handwheel	Cast Iron
4	Hex Nut	ASTM B283-C37700
5	Packing Gland	ASTM B283-C3770
6	Packing	PTFE
7	Stem	ASTM B171-C46500
8	Bonnet	ASTM B171-C46500
9	Packing Nut	ASTM B171-C46500
10	Disc	ASTM B171-C46500
11	Body	ASTM B171-C46500
12	Washer	PTFE

## Dimensions & Weights

Inches (millimeters) - Pounds (kilograms)

Gate Solder End								
Size	Units	T	A	B	C	D	E	F
1/2	in	0.07	1.74	0.50	0.55	0.63	2.93	2.13
	mm	1.8	44.2	12.7	14	15.93	74.5	54
3/4	in	0.07	2.32	0.75	0.77	0.88	3.39	2.32
	mm	1.8	58.9	19.05	19.5	22.28	86	59
1	in	0.08	2.75	0.91	0.98	1.13	3.90	2.83
	mm	2	69.8	23.2	25	28.65	99	72
1 1/4	in	0.09	2.98	0.97	1.26	1.38	4.49	3.07
	mm	2.2	75.8	24.7	32	35	114	78
1 1/2	in	0.09	3.30	1.09	1.50	1.63	5.12	3.46
	mm	2.3	83.8	27.7	38	41.36	130	88
2	in	0.10	3.97	1.34	1.89	2.13	5.96	3.86
	mm	2.5	100.8	34.1	48	54	151.5	98



# LEAD FREE GGC VALVES

## Brass Body, Horizontal Swing Check, Threaded End connections LFB-319C

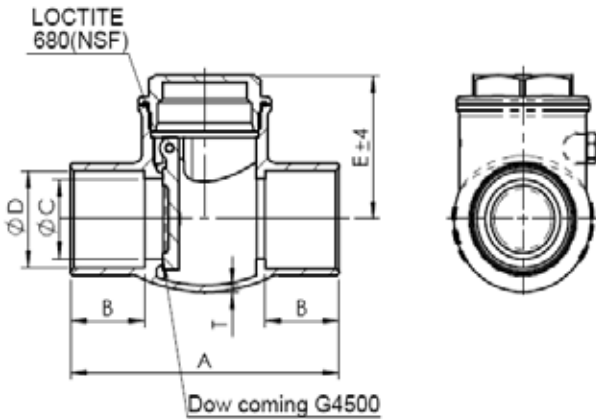
200 CWP @ 100° F

Dimensions and workmanship conform to MSS SP-80

Designed in Accordance with the NSF-61-8



IAPMO Tested and Certified  
NSF/ANSI 61 Annex G  
Lead Free Compliant  
For Potable Water Use



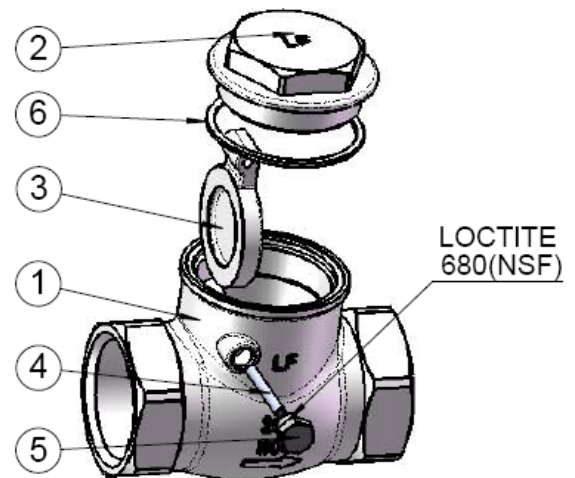
### Materials of Construction:

No.	Description	Material
1	Body	ASTM B171-C46500
2	Bonnet	ASTM B171-C46500
3	Disc	ASTM B171-C46500
4	Pin	ASTM B135 C28000
5	Screw	ASTM B283-C37700
6	Washer	PTFE

### Dimensions & Weights

Inches (millimeters) - Pounds (kilograms)

Check NPT End							
Size	Units	T	A	B	C	D	E
1/2	in	0.07	2.13	0.59	0.51	1/2 NPT	1.30
	mm	1.8	54	15	13		33
3/4	in	0.07	2.36	0.61	0.73	3/4 NPT	1.48
	mm	1.8	60	15.5	18.5		37.5
1	in	0.08	2.83	0.73	0.93	1 NPT	1.67
	mm	2	72	18.5	23.5		42.5
1 1/4	in	0.09	3.23	0.75	1.22	1 1/4 NPT	1.99
	mm	2.2	82	19	31		50.5
1 1/2	in	0.09	3.62	0.75	1.42	1 1/2 NPT	2.19
	mm	2.3	92	19	36		55.5
2	in	0.10	4.13	0.79	1.77	2 NPT	2.62
	mm	2.5	105	20	45		66.5



## LEAD FREE GGC VALVES

### Brass Body, Horizontal Swing Check, Solder End connection LFB-309C

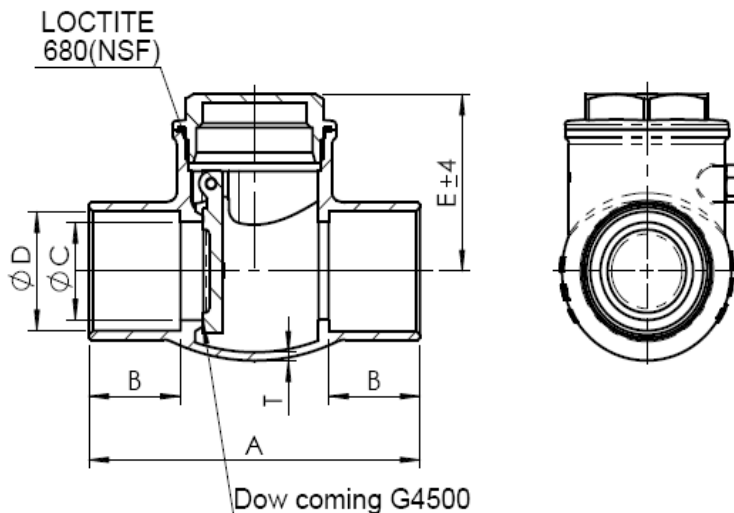
200 CWP @ 100° F

Dimensions and workmanship conform to MSS SP-80

Designed in Accordance with the NSF-61-8



IAPMO Tested and Certified  
NSF/ANSI 61 Annex G  
Lead Free Compliant  
For Potable Water Use



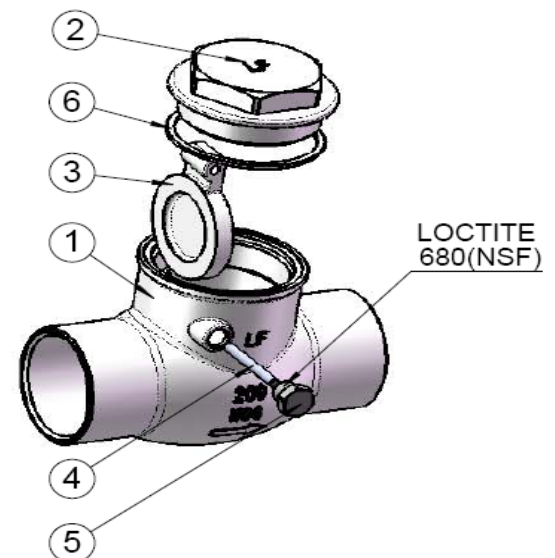
### Materials of Construction:

No.	Description	Material
1	Body	ASTM B171-C46500
2	Bonnet	ASTM B171-C46500
3	Disc	ASTM B171-C46500
4	Pin	ASTM B135 C28000
5	Screw	ASTM B283-C37700
6	Washer	PTFE

### Dimensions & Weights

Inches (millimeters) - Pounds (kilograms)

Check Solder End							
Size	Units	T	A	B	C	D	E
½	in	0.07	2.13	0.50	0.51	0.63	1.3
	mm	1.8	54	12.7	13.0	15.9	33.0
¾	in	0.07	2.78	0.75	0.73	0.88	1.5
	mm	1.8	70.5	19.1	18.5	22.3	37.5
1	in	0.08	3.31	0.91	0.93	1.13	1.7
	mm	2	84	23.2	23.5	28.7	42.5
1¼	in	0.09	3.86	0.97	1.22	1.38	2.0
	mm	2.2	98	24.7	31.0	35.0	50.5
1½	in	0.09	3.86	0.97	1.22	1.38	2.0
	mm	2.3	113	27.7	36.0	41.4	55.5
2	in	0.10	5.31	1.34	1.77	2.13	2.6
	mm	2.5	135	34.1	45.0	54.0	66.5



2129 3rd Ave, S.E  
Cullman, Alabama  
35055, U.S.A  
Tel.: (1) 256 775 3800  
Fax: (1) 256 775 3860  
www.cranecpe.com

### Crane ChemPharma & Energy, Stockham®

Crane Co., and its subsidiaries cannot accept responsibility for possible errors in catalogues, brochures, other printed materials, and website information. Crane Co. reserves the right to alter its products without notice, including products already on order provided that such alteration can be made without changes being necessary in specifications already agreed. All trademarks in this material are property of the Crane Co. or its subsidiaries. The Crane and Crane brands logotype, in alphabetical order, (ALOYCO®, CENTER LINE®, COMPAC-NOZ®, CRANE®, DEPA® & ELRO®, DUO-CHEK®, FLOWSEAL®, JENKINS®, KROMBACH®, NOZ-CHEK®, PACIFIC®, RESISTOFLEX®, REVO®, SAUNDERS®, STOCKHAM®, TRIANGLE®, UNI-CHEK®, VALVES®, WTA®, and XOMOX®) are registered trademarks of Crane Co. All rights reserved.