

[www.depapumps.com](http://www.depapumps.com)

DEPA<sup>®</sup> Valve Ball Lifter offers many key features and benefits including:

- 1 Drainage in Place**  
Innovative design enables in-place drainage for residue-free operation in critical applications such as paint & varnish, storage tanks and filling machines.
- 2 Ease of Operation**  
A dual-rotating pin ensures flawless operation in both clockwise and counter-clockwise direction, eliminating the challenges associated with sticking caused by media remaining in the pump housing.
- 3 Extended Service Life**  
Design in combination with 316L stainless steel delivers superior resistance to corrosive chemicals such as alkalis, acids and solvents, thus ensuring reduced maintenance and longer service life.



## DEPA® Valve Ball Lifter

### Features and Benefits

Type	15	25	40	50	80
DH-FA	●	●	●	●	●
DL*	●	●	●	●	●

\*Applicable for CA/CX/SA/SS/SX/SF/SFS

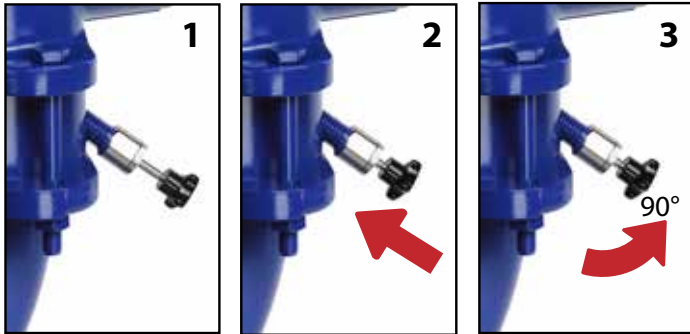
- The material of metallic components is stainless steel 1.4404/316L
- The external sealing is a FKM O-Ring (as standard version)
- Roughness average  $R_a=12,5\mu\text{m}^*$

\*upon request available for SF/ SFS ( $R_a=3,2\mu\text{m}$ )

### Particle Size

Type	15	25	40	50	80
mm	3,5	4	6	8	10

### Handling



**Figure 1:**

In normal operation the pin is completely extended; valve ball is able to move up and down.

**Figure 2:**

Push pin into the guide bush. Important: only two positions are possible.

**Figure 3:**

When reaching the end position, rotate the pin by 90 degrees. Both directions are possible.

### Applied Guidelines

The DEPA Valve Ball Lifter is designed in accordance with pump specifications, and is ATEX compliant with directive:

- 94/9/EC equipment group II, category 2GD, Explosion group IIB Tx (II 2 GD IIB Tx\*) and equipment group I, category M2 (I M2)
- Machinery Directive 2006/42/EC

\*only in combination with a ATEX certified pump

Harmonized standards:

- DIN 12162 (Liquid pumps - Safety requirements - Procedure for hydrostatic testing)



ATEX-compliant  
II 2GD IIB Tx  
I M2



### Dimensions

Size	Type				
	DH15	DH25	DH40	DH50	DH80
A (max.)	287	349	437	564	671
B	338	427	512	655	817
C	252	328	382	497	622
D	174	234	266	351	434

Size	Type				
	DL15	DL25	DL40	DL50	DL80
A (max.)	301	356	422	528	625
B	295	405	492	635	790
C	251	320	391	509	633
D	246	234	285	353	437

