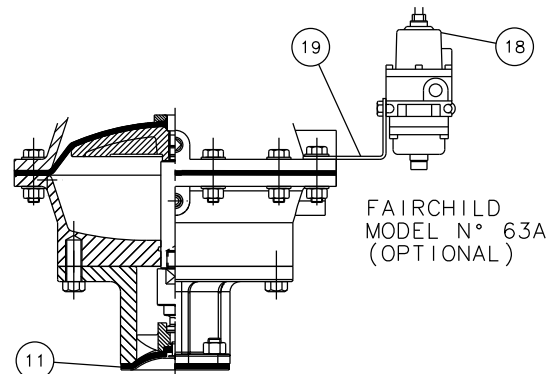
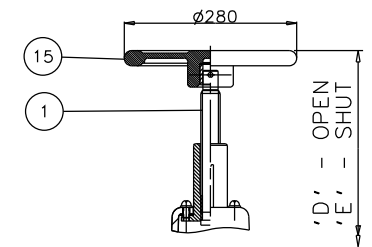


RUBBER LINE DIAPHRAGM

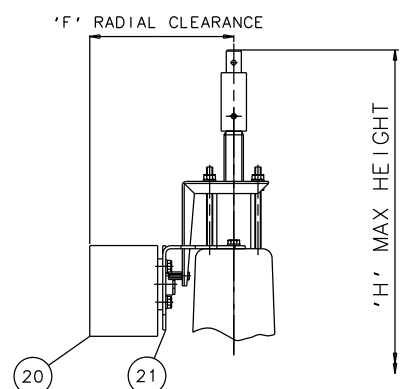


FAIRCHILD  
MODEL N° 63A  
(OPTIONAL)

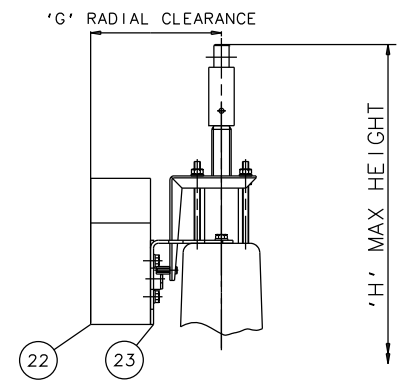
RUBBER/PTFE LINE DIAPHRAGM



EMERGENCY HANDWHEEL  
(OPTIONAL)



'007' SWITCHBOX  
(OPTIONAL)



VIAPOS-MIDI POSITIONER  
(OPTIONAL)

Item	Component	Material	lining
1	HANDWHEEL SPINDLE	MILD STEEL	
2	UPPER SPRING PLATE	MILD STEEL	
3	SPRING	MILD STEEL	
4	SPRING COVER	SILICON ALUM.	
5	BUSH/CYL. 'O' RING	RUBBER	
6	DIAPHRAGM PLATE	FORGED STEEL	
7	OPERATING DIAPHRAGM	RUBBER	
8	MASTER SPINDLE	STAINLESS STEEL	
9	BONNET	STEEL	
10	COMPRESSOR	STAINLESS STEEL	
11	LINE DIAPHRAGM	RUBBER/PTFE	
12	SPINDLE ATTACHMENT	STAINLESS STEEL	
13	UPPER CYLINDER	SILICON ALUM.	
14	LOWER CYLINDER	SILICON ALUM.	
15	HANDWHEEL	STEEL	
16	BODY	CAST IRON	GLASS
17	LOWER SPRING PLATE	MILD STEEL	
18	FAIRCHILD REGULATOR		
19	MOUNTING BRACKET	STAINLESS STEEL	
20	'007' SWITCHBOX		
21	MOUNTING BRACKET	STAINLESS STEEL	
22	VIAPOS MIDI POSITIONER		
23	MOUNTING BRACKET	STAINLESS STEEL	

Size(DN)	A	B	C	D	E	F	G	H
50	774	190	230	792	762	142	152	827
65	784	216	290	802	837	142	152	836
80	785	254	310	804	845	142	152	838
100	811	305	350	829	786	142	152	863

The information on this sheet is Private and Confidential and is the property of Crane Process Flow Technologies Limited and must not be published directly or indirectly in any manner whatsoever without the written permission of the Company and must not be used in any way detrimental to their interests.  
© Crane Process Flow Technologies

**CRANE** Process Flow Technologies  
A Crane Co. Company

**Saunders**  
The Science Inside

Title  
GENERAL ARRANGEMENT OF 'A' TYPE ES70 SPRING  
OPENING MODULAR ACTUATOR (D8000) COMPLETE  
WITH OPTIONS INCLUDING SWITCHES  
FITTED ON GLASS LINED FLANGED BODY

Drawn JRD	Date 19.06.13	UNCONTROLLED IN HARD COPY FORMAT	
Checked RND	Date 19.06.13		
First Angle Projection Method E	DO NOT SCALE	Drawing No.	Issue. 1