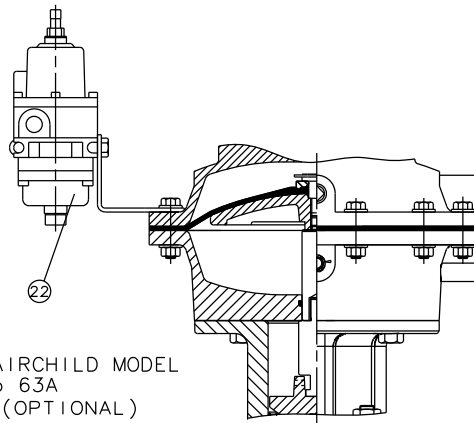
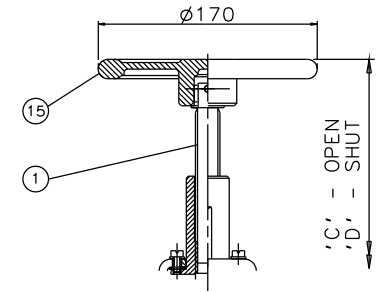


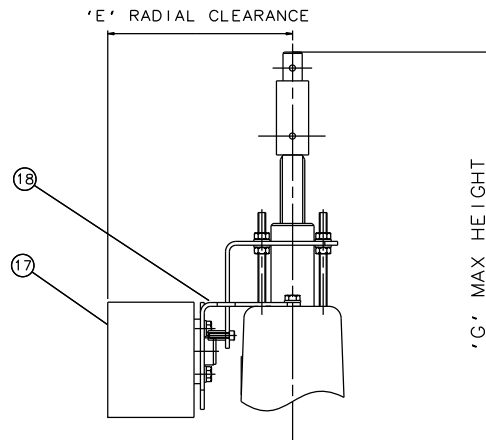
RUBBER LINE DIAPHRAGM



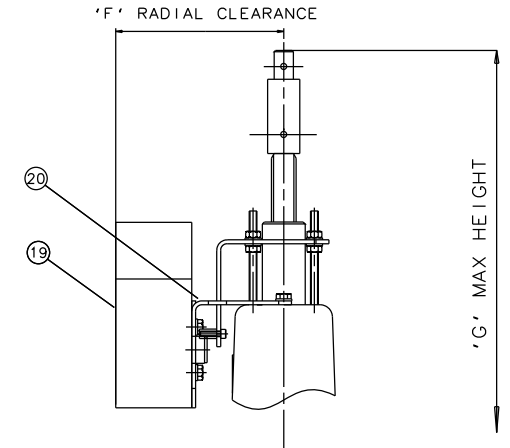
FAIRCHILD MODEL  
No 63A  
(OPTIONAL)



EMERGENCY HANDWHEEL  
(OPTIONAL)



'007' SWITCHBOX  
(OPTIONAL)



VIAPOS-MIDI POSITIONER  
(OPTIONAL)

Item	Component	Material								
1	HANDWHEEL SPINDLE	MILD STEEL								
2	UPPER SPRING PLATE	STEEL								
3	SPRING	STEEL								
4	COVER	SILICON ALUM								
5	CYLINDER 'O' RING	RUBBER								
6	DIAPHRAGM PLATE	FORGED STEEL								
7	OPERATING DIAPHRAGM	RUBBER								
8	MASTER SPINDLE	STAINLESS STEEL								
9	BONNET	CAST IRON								
10	COMPRESSOR	CAST IRON								
11	LINE DIAPHRAGM	RUBBER/PTFE								
12	SPINDLE ATTACHMENT	STAINLESS STEEL								
13	LOWER CYLINDER	SILICON ALUM								
14	UPPER CYLINDER	SILICON ALUM								
15	HANDWHEEL	CAST IRON								
16	BODY	CAST IRON	Size (DN)	A	B	C	D	E	F	G
		SG IRON	25	508	111	526	512	144	131	549
		STAINLESS STEEL	40	519	143	537	513	144	131	509
		GUNMETAL								
	CAST STEEL									
17	'007' SWITCHBOX	CAST IRON	50	550	168	568	536	144	131	573
18	MOUNTING BRACKET	STAINLESS STEEL								
19	VIAPOS-MIDI POSITIONER	CAST IRON	65	551	206	569	537	144	131	574
20	MOUNTING BRACKET	STAINLESS STEEL								
21	FAIRCHILD REGULATOR	CAST IRON	80	557	257	575	536	144	131	580
22	MOUNTING BRACKET	STAINLESS STEEL								

The information on this sheet is Private and Confidential and is the property of Crane Process Flow Technologies Limited and must not be published directly or indirectly in any manner whatsoever without the written permission of the Company and must not be used in any way detrimental to their interests.

Crane Process Flow Technologies

**CRANE** Process Flow Technologies  
A Crane Co. Company

**Saunders**  
The Science Inside

Title  
GENERAL ARRANGEMENT OF 'A' TYPE ES69 SPRING  
OPENING MODULAR ACTUATOR (C8000) COMPLETE  
WITH OPTIONS INCLUDING SWITCHES FITTED ON  
SCREWED BODY

Drawn	NAW	Date	26.11.13	UNCONTROLLED IN HARD COPY FORMAT
Checked	RND	Date	26.11.13	
First Angle Projection Method E		DO NOT SCALE	Drawing No. A-ES69-SCREWED	Issue. 1