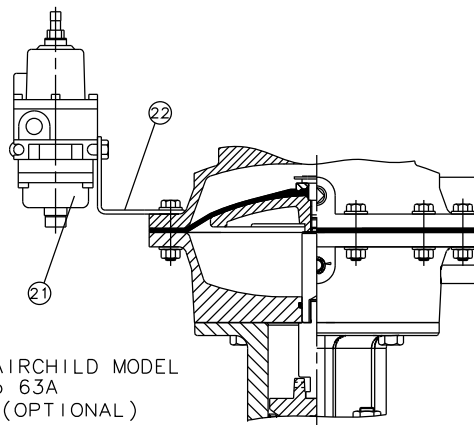
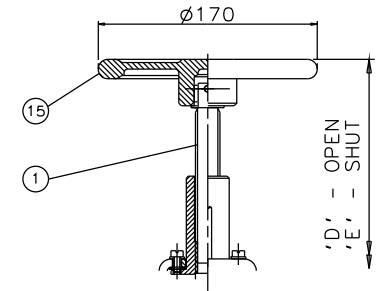


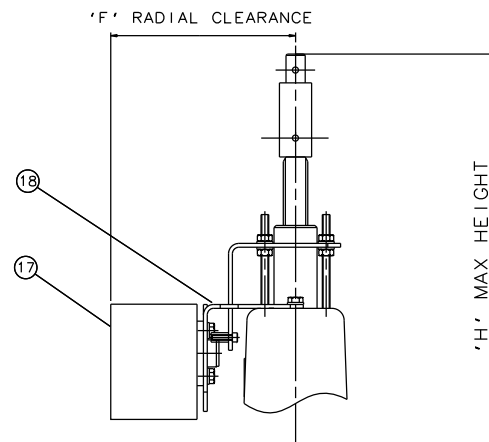
RUBBER LINE DIAPHRAGM



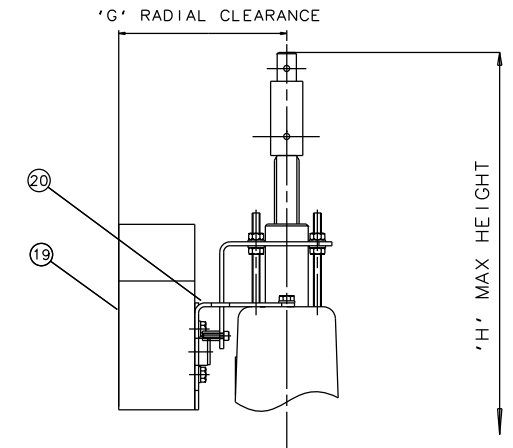
FAIRCHILD MODEL
No 63A
(OPTIONAL)



EMERGENCY HANDWHEEL
(OPTIONAL)



'007' SWITCHBOX
(OPTIONAL)



VIAPOS-MIDI POSITIONER
(OPTIONAL)

Item	Component	Material	Lining
1	HANDWHEEL SPINDLE	MILD STEEL	
2	UPPER SPRING PLATE	STEEL	
3	SPRING	STEEL	
4	COVER	SILICON ALUM	
5	CYLINDER 'O' RING	RUBBER	
6	DIAPHRAGM PLATE	FORGED STEEL	
7	OPERATING DIAPHRAGM	RUBBER/PTFE	
8	MASTER SPINDLE	STAINLESS STEEL	
9	BONNET	CAST IRON	
10	COMPRESSOR	CAST IRON	
11	LINE DIAPHRAGM	RUBBER/PTFE	
12	SPINDLE ATTACHMENT	STAINLESS STEEL	
13	LOWER CYLINDER	SILICON ALUM	
14	UPPER CYLINDER	SILICON ALUM	
15	HANDWHEEL	CAST IRON	
16	BODY	CAST IRON	HARD RUBBER
		SG IRON	SOFT RUBBER
		CAST STEEL	BUTYL RUBBER
			NEOPRENE RUBBER
17	'007' SWITCHBOX	STAINLESS STEEL	
18	MOUNTING BRACKET	STAINLESS STEEL	
19	VIAPOS-MIDI POSITIONER	STAINLESS STEEL	
20	MOUNTING BRACKET	STAINLESS STEEL	
21	FAIRCHILD REGULATOR	STAINLESS STEEL	
22	MOUNTING BRACKET	STAINLESS STEEL	

Size(DN)	A	B	C	D	E	F	G	H
25	500	127	160	518	504	144	131	541
40	514	159	200	532	509	144	131	546
50	539	190	230	557	525	144	131	562
65	539	216	290	557	525	144	131	562
80	542	254	310	560	528	144	131	565

The information on this sheet is Private and Confidential and is the property of Crane Process Flow Technologies Limited and must not be published directly or indirectly in any manner whatsoever without the written permission of the Company and must not be used in any way detrimental to their interests.

Crane Process Flow Technologies

CRANE Process Flow Technologies
A Crane Co. Company

Saunders
The Science Inside

Title
GENERAL ARRANGEMENT OF 'A' TYPE ES69 SPRING
OPENING MODULAR ACTUATOR (C8000) COMPLETE
WITH OPTIONS INCLUDING SWITCHES FITTED ON
RUBBER LINED FLANGED BODY

Drawn	NAW	Date	26.11.13	UNCONTROLLED IN HARD COPY FORMAT
Checked	RND	Date	26.11.13	
First Angle Projection Method E		DO NOT SCALE	Drawing No. A-ES69-RUBBER	Issue. 1