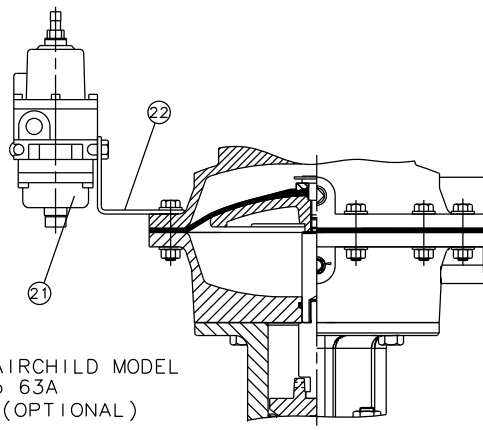
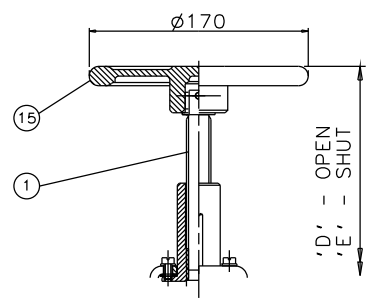


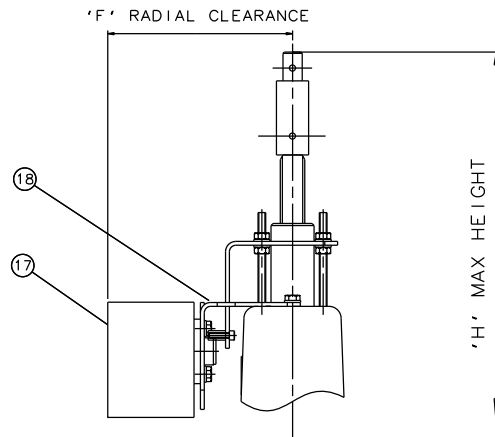
RUBBER LINE DIAPHRAGM



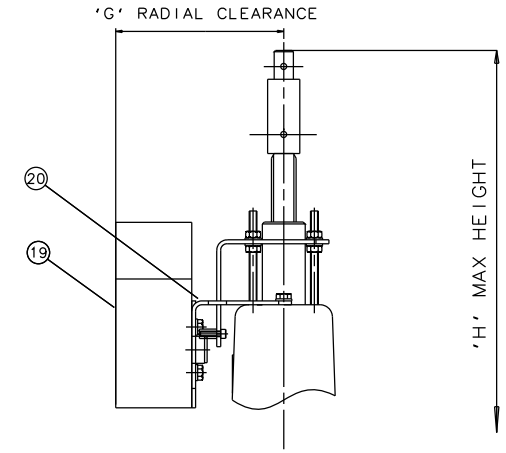
FAIRCHILD MODEL No 63A (OPTIONAL)



EMERGENCY HANDWHEEL (OPTIONAL)



'007' SWITCHBOX (OPTIONAL)



VIAPOS-MIDI POSITIONER (OPTIONAL)

Item	Component	Material	Lining
1	HANDWHEEL SPINDLE	MILD STEEL	
2	UPPER SPRING PLATE	STEEL	
3	SPRING	STEEL	
4	COVER	SILICON ALUM	
5	CYLINDER 'O' RING	RUBBER	
6	DIAPHRAGM PLATE	FORGED STEEL	
7	OPERATING DIAPHRAGM	RUBBER/PTFE	
8	MASTER SPINDLE	STAINLESS STEEL	
9	BONNET	CAST IRON	
10	COMPRESSOR	CAST IRON	
11	LINE DIAPHRAGM	RUBBER/PTFE	
12	SPINDLE ATTACHMENT	STAINLESS STEEL	
13	LOWER CYLINDER	SILICON ALUM	
14	UPPER CYLINDER	SILICON ALUM	
15	HANDWHEEL	CAST IRON	
16	BODY	CAST IRON	GLASS
17	'007' SWITCHBOX		
18	MOUNTING BRACKET	STAINLESS STEEL	
19	VIAPOS-MIDI POSITIONER		
20	MOUNTING BRACKET	STAINLESS STEEL	
21	FAIRCHILD REGULATOR		
22	MOUNTING BRACKET	STAINLESS STEEL	

Size(DN)	A	B	C	D	E	F	G	H
25	498	127	160	519	505	144	131	542
40	512	159	200	533	510	144	131	547
50	538	190	230	558	526	144	131	563
65	537	216	290	558	526	144	131	563
80	539	254	310	561	529	144	131	566

The information on this sheet is Private and Confidential and is the property of Crane Process Flow Technologies Limited and must not be published directly or indirectly in any manner whatsoever without the written permission of the Company and must not be used in any way detrimental to their interests.

CRANE Process Flow Technologies
A Crane Co. Company

Saunders
The Science Inside

Title
GENERAL ARRANGEMENT OF 'A' TYPE ES69 SPRING OPENING MODULAR ACTUATOR (C8000) COMPLETE WITH OPTIONS INCLUDING SWITCHES FITTED ON GLASS LINED FLANGED BODY

Drawn	NAW	Date	27.11.13	UNCONTROLLED IN HARD COPY FORMAT
Checked	RND	Date	27.11.13	
First Angle Projection Method E		DO NOT SCALE	Drawing No.	Issue.
			A-ES69-GLASS	1