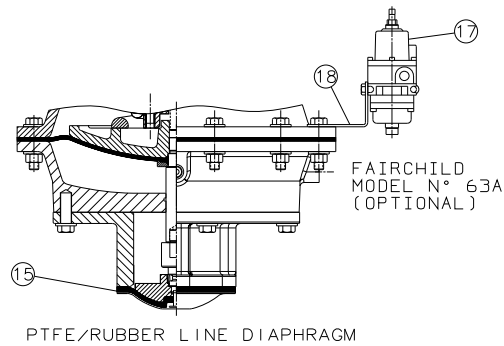
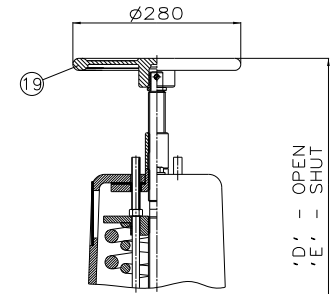


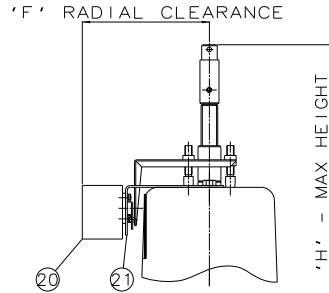
RUBBER LINE DIAPHRAGM



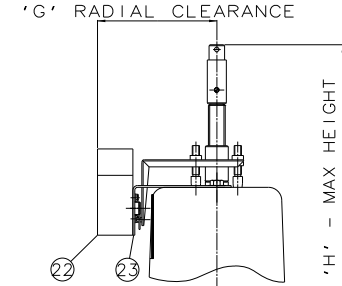
PTFE/RUBBER LINE DIAPHRAGM



EMERGENCY HANDWHEEL (OPTIONAL)



'007' SWITCHBOX (OPTIONAL)



VIAPOS-MIDI POSITIONER (OPTIONAL)

Item	Component	Material	Lining
1	HANDWHEEL SPINDLE	MILD STEEL	
2	UPPER SPRINGS PLATE	FORGED STEEL	
3	OUTER SPRING	STEEL	
4	INNER SPRING	STEEL	
5	COVER	SILICON ALUMINIUM	
6	DIAPHRAGM PLATE	FORGED STEEL	
7	OPERATING DIAPHRAGM	RUBBER	
8	LOWER CYLINDER	SILICON ALUMINIUM	
9	LOWER CYLINDER O RING	RUBBER	
10	MASTER SPINDLE	STAINLESS STEEL	
11	BONNET	CAST IRON	
12	SPINDLE ATTACHMENT	STAINLESS STEEL	
13	COMPRESSOR	CAST IRON	
14	LINE DIAPHRAGM	RUBBER	
15	LINE DIAPHRAGM	RUBBER/PTFE	
16	BODY	CAST IRON	GLASS LINED
17	FAIRCHILD REGULATOR		
18	MOUNTING BRACKET	STAINLESS STEEL	
19	HANDWHEEL	CAST IRON	
20	'007' SWITCHBOX		
21	MOUNTING BRACKET	STAINLESS STEEL	
22	VIAPOS MIDI POSITIONER		
23	MOUNTING BRACKET	STAINLESS STEEL	

Size (DN)	A	B	C	D	E	F	G	H
80	789	254	310	820	778	212	199	856
100	810	305	350	841	795	212	199	877
125	829	356	400	860	807	212	199	896
150	900	406	480	931	880	212	199	967

The information on this sheet is Private and Confidential and is the property of Crane Process Flow Technologies Limited and must not be published directly or indirectly in any manner whatsoever without the written permission of the Company and must not be used in any way detrimental to their interests.  
© Crane Process Flow Technologies

**CRANE** Process Flow Technologies  
A Crane Co. Company

**Saunders**  
The Science Inside

Title  
GENERAL ARRANGEMENT OF 'A' TYPE ES64 SPRING CLOSING MODULAR ACTUATOR (E8400) COMPLETE WITH OPTIONS FITTED ON GLASS LINED FLANGED BODY

Drawn RI Date 15.06.12 UNCONTROLLED IN  
Checked RND Date 15.06.12 HARD COPY FORMAT

First Angle Projection DO NOT SCALE Drawing No. A-ES64-GLASS Issue. 1  
Method E