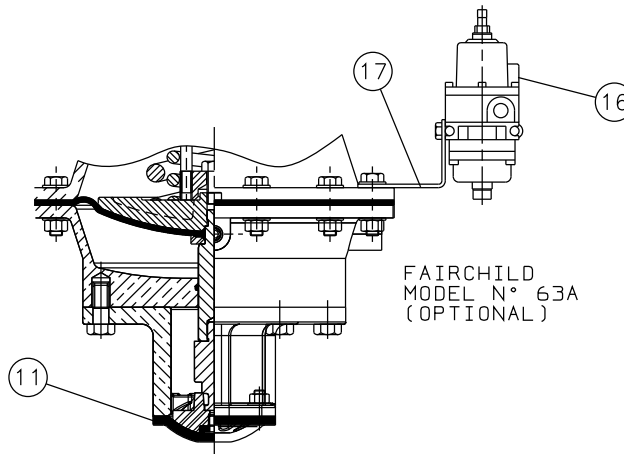
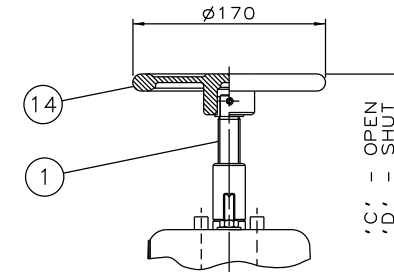


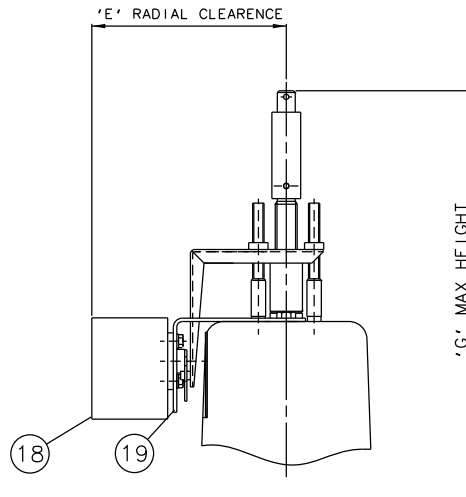
RUBBER LINE DIAPHRAGM



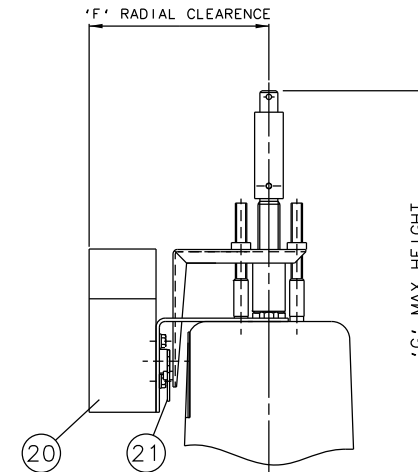
PTFE/RUBBER LINE DIAPHRAGM



EMERGENCY HANDWHEEL (OPTIONAL)



'007' SWITCHBOX (OPTIONAL)



VIAPOS-MIDI POSITIONER (OPTIONAL)

Item	Component	Material
1	HANDWHEEL SPINDLE	MILD STEEL
2	UPPER SPRING PLATE	MILD STEEL
3	SPRINGS	STEEL
4	COVER	SILICON ALUM.
5	CYLINDER O RING	NITRILE
6	DIAPHRAGM PLATE	FORGED STEEL
7	OPERATING DIAPHRAGM	RUBBER
8	MASTER SPINDLE	STAINLESS STEEL
9	BONNET	CAST IRON
10	COMPRESSOR	CAST IRON
11	LINE DIAPHRAGM	RUBBER/PTFE
12	SPINDLE ATTACHMENT	STAINLESS STEEL
13	LOWER CYLINDER	SILICON ALUM.
14	HANDWHEEL	CAST IRON
15	BODY	CAST IRON
		SG IRON
16	FAIRCHILD REGULATOR	STAINLESS STEEL
17	MOUNTING BRACKET	STAINLESS STEEL
18	'007' SWITCHBOX	STAINLESS STEEL
19	MOUNTING BRACKET	STAINLESS STEEL
20	VIAPOS MIDI POSITIONER	STAINLESS STEEL
21	MOUNTING BRACKET	STAINLESS STEEL

Size(DN)	A	B	C	D	E	F	G
50	734	168	752	722	172	159	812
65	747	206	765	730	172	159	825
80	754	257	772	730	172	159	832

The information on this sheet is Private and Confidential and is the property of Crane Process Flow Technologies Limited and must not be published directly or indirectly in any manner whatsoever without the written permission of the Company and must not be used in any way detrimental to their interests.
© Crane Process Flow Technologies

CRANE Process Flow Technologies
A Crane Co. Company

Saunders
The Science Inside

Title
GENERAL ARRANGEMENT OF 'A' TYPE ES63 SPRING CLOSING MODULAR ACTUATOR (D8400) COMPLETE WITH OPTIONS INCLUDING SWITCHES FITTED ON SCREWED BODY

Drawn	JRD	Date	13.09.13	UNCONTROLLED IN HARD COPY FORMAT
Checked	RND	Date	13.09.13	
First Angle Projection Method E		DO NOT SCALE	Drawing No.	Issue.
			A-ES63-SCREWED	1