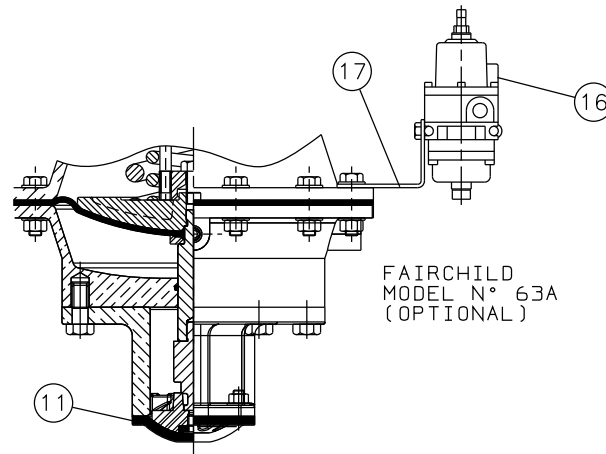
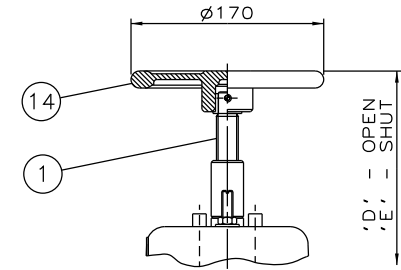


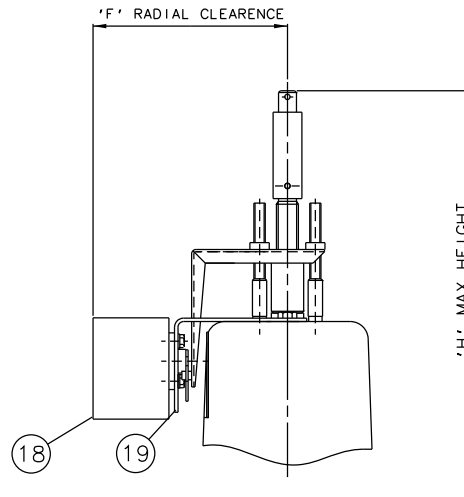
RUBBER LINE DIAPHRAGM



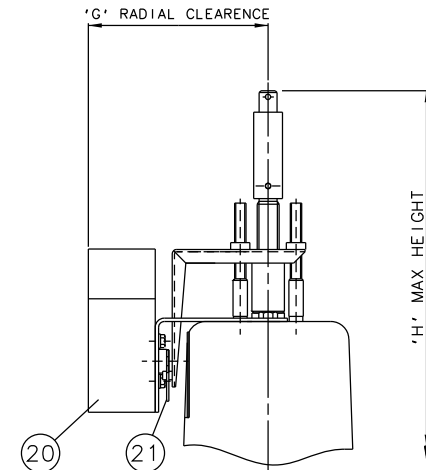
PTFE/RUBBER LINE DIAPHRAGM



EMERGENCY HANDWHEEL (OPTIONAL)



'007' SWITCHBOX (OPTIONAL)



VIAPOS-MIDI POSITIONER (OPTIONAL)

Item	Component	Material	Lining
1	HANDWHEEL SPINDLE	MILD STEEL	
2	UPPER SPRING PLATE	MILD STEEL	
3	SPRINGS	STEEL	
4	COVER	SILICON ALUM.	
5	CYLINDER O RING	NITRILE	
6	DIAPHRAGM PLATE	FORGED STEEL	
7	OPERATING DIAPHRAGM	RUBBER	
8	MASTER SPINDLE	STAINLESS STEEL	
9	BONNET	CAST IRON	
10	COMPRESSOR	CAST IRON	
11	LINE DIAPHRAGM	RUBBER/PTFE	
12	SPINDLE ATTACHMENT	STAINLESS STEEL	
13	LOWER CYLINDER	SILICON ALUM.	
14	HANDWHEEL	CAST IRON	
15	BODY	CAST IRON	HARD RUBBER
		CAST IRON	SOFT RUBBER
		SG IRON	BUTYL RUBBER
		CAST STEEL	NEOPRENE RUBBER
16	FAIRCHILD REGULATOR		
17	MOUNTING BRACKET	STAINLESS STEEL	
18	'007' SWITCHBOX		
19	MOUNTING BRACKET	STAINLESS STEEL	
20	VIAPOS MIDI POSITIONER		
21	MOUNTING BRACKET	STAINLESS STEEL	

Size (DN)	A	B	C	D	E	F	G	H
50	723	190	230	741	711	172	159	801
65	735	216	290	753	718	172	159	813
80	739	254	310	757	715	172	159	816
100	762	305	350	780	740	172	159	840

The information on this sheet is Private and Confidential and is the property of Crane Process Flow Technologies Limited and must not be published directly or indirectly in any manner whatsoever without the written permission of the Company and must not be used in any way detrimental to their interests.

CRANE Process Flow Technologies A Crane Co. Company	Saunders The Science Inside
Title GENERAL ARRANGEMENT OF 'A' TYPE ES63 SPRING CLOSING MODULAR ACTUATOR (D8400) COMPLETE WITH OPTIONS INCLUDING SWITCHES FITTED ON RUBBER LINED FLANGED BODY	
Drawn JRD Date 13.09.13	UNCONTROLLED IN HARD COPY FORMAT
Checked RND Date 13.09.13	
First Angle Projection Method E	DO NOT SCALE
Drawing No. A-ES63-RUBBER	Issue. 1