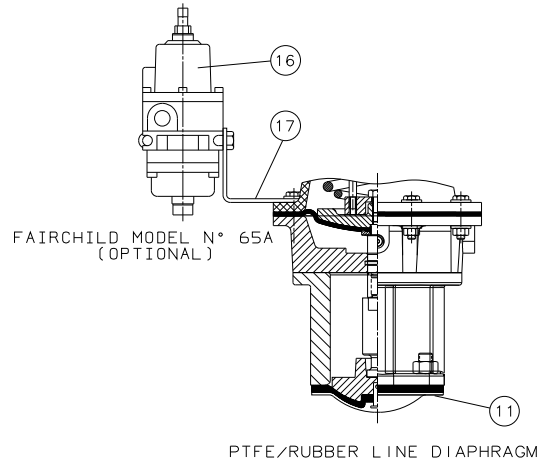
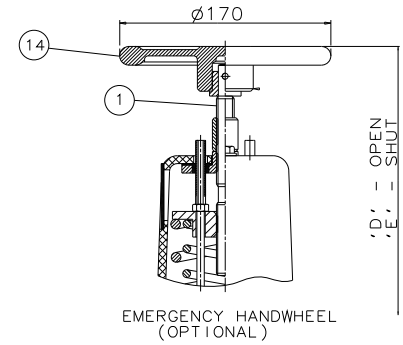


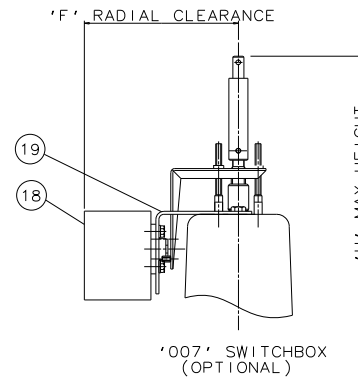
RUBBER LINE DIAPHRAGM



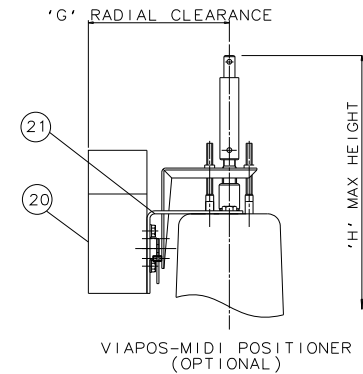
PTFE/RUBBER LINE DIAPHRAGM



EMERGENCY HANDWHEEL (OPTIONAL)



'007' SWITCHBOX (OPTIONAL)



VIAPOS-MIDI POSITIONER (OPTIONAL)

Item	Component	Material										
1	HANWHEEL SPINDLE	MILD STEEL										
2	UPPER SPRING PLATE	MILD STEEL										
3	SPRINGS	STEEL										
4	COVER	SILICON ALUM.										
5	CYLINDER O RING	NITRILE										
6	DIAPHRAGM PLATE	FORGED STEEL										
7	OPERATING DIAPHRAGM	RUBBER										
8	MASTER SPINDLE	STAINLESS STEEL										
9	BONNET	CAST IRON										
10	COMPRESSOR	MALLEABLE IRON CAST IRON										
11	LINE DIAPHRAGM	RUBBER/PTFE										
12	SPINDLE ATTACHMENT	STAINLESS STEEL										
13	LOWER CYLINDER	SILICON ALUM.										
14	HANDWHEEL	CAST IRON										
15	BODY	SG IRON	Size(DN)	A	B	C	D	E	F	G	H	
		STAINLESS STEEL	20	413	117	150	428	417	155	142	417	
		GUNMETAL										
		CAST STEEL										
16	FAIRCHILD REGULATOR		25	423	127	160	438	426	155	142	426	
17	MOUNTING BRACKET	STAINLESS STEEL										
18	'007' SWITCHBOX		40	435	159	200	452	431	155	142	431	
19	MOUNTING BRACKET	STAINLESS STEEL										
20	VIAPOS MIDI POSITIONER		50	461	190	230	477	454	155	142	454	
21	MOUNTING BRACKET	STAINLESS STEEL										

The information on this sheet is Private and Confidential and is the property of Crane Process Flow Technologies Limited and must not be published directly or indirectly in any manner whatsoever without the written permission of the Company and must not be used in any way detrimental to their interests.
© Crane Process Flow Technologies

CRANE Process Flow Technologies
A Crane Co. Company

Saunders
The Science Inside

Title
GENERAL ARRANGEMENT OF 'A' TYPE ES61 SPRING CLOSING MODULAR ACTUATOR (B8400) COMPLETE WITH OPTIONS INCLUDING SWITCHES FITTED ON UNLINED FLANGED BODY

Drawn NAW Date 02.09.13 UNCONTROLLED IN HARD COPY FORMAT
Checked RND Date 02.09.13

First Angle Projection DO NOT SCALE Drawing No. A-ES61-UNL INED Issue. 1
Method E