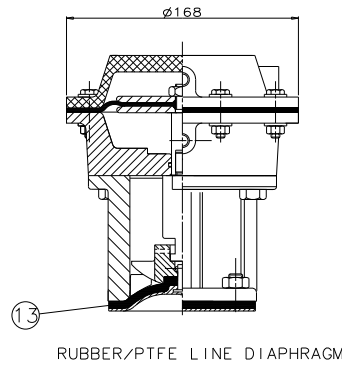
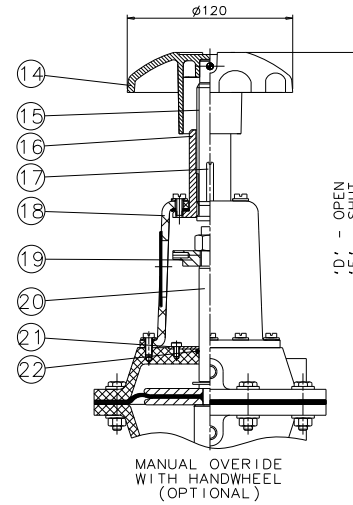


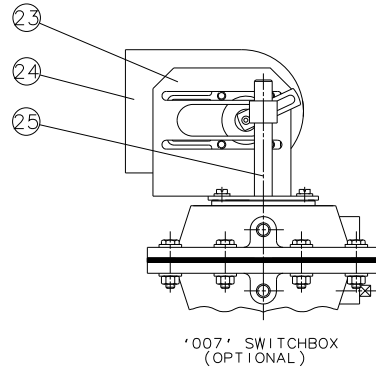
RUBBER LINE DIAPHRAGM



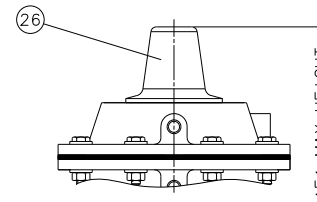
RUBBER/PTFE LINE DIAPHRAGM



MANUAL OVERRIDE WITH HANDWHEEL (OPTIONAL)



'007' SWITCHBOX (OPTIONAL)



'F' MAX HEIGHT

Item	Component	Material	Lining
1	UPPER CYLINDER	SILICON ALUM.	
2	UPPER DIAPHRAGM PLATE	MILD STEEL	
3	LOWER DIAPHRAGM PLATE	MILD STEEL	
4	OPERATING DIAPHRAGM	RUBBER	
5	LOWER CYLINDER	SILICON ALUM.	
6	CYLINDER 'O' RING	NITRILE	
7	MASTER SPINDLE	STAINLESS STEEL	
8	SPINDLE ADAPTOR	STAINLESS STEEL	
9	BONNET	CAST IRON	
10	COMPRESSOR	CAST IRON	
11	LINE DIAPHRAGM	RUBBER	
12	BODY	SG IRON	PVDF LINED ETFE LINED PP LINED PFA LINED
13	PTFE LINE DIAPHRAGM	RUBBER/PTFE	
14	HANDWHEEL	CAST IRON	
15	HANDWHEEL SPINDLE	MILD STEEL	
16	SPINDLE BUSH	MILD STEEL	
17	INDICATOR ROD	MILD STEEL	
18	COVER	SILICON ALUM.	
19	UPPER SPRING PLATE	MILD STEEL	
20	GUIDE ROD	MILD STEEL	
21	SEALING PLATE	MILD STEEL	
22	SEALING PLATE 'O' RING	RUBBER	
23	MOUNTING BRACKET	STAINLESS STEEL	
24	'007' SWITCHBOX		
25	LIFTING ROD	STAINLESS STEEL	
26	INDICATOR COVER	POLYAMIDE	

Size (DN)	A	B	C	D	E	F
15	153	108	130	364	343	208
20	168	117	150	379	358	223
25	175	127	160	386	365	230
40	188	159	200	399	378	243
50	212	190	230	423	402	267

The information on this sheet is Private and Confidential and is the property of Crane Process Flow Technologies Limited and must not be published directly or indirectly in any manner whatsoever without the written permission of the Company and must not be used in any way detrimental to their interests.
© Crane Process Flow Technologies

CRANE	Process Flow Technologies A Crane Co. Company	Saunders The Science Inside
--------------	--	---------------------------------------

Title
GENERAL ARRANGEMENT OF 'A' TYPE ES54 DOUBLE ACTING MODULAR ACTUATOR (B8200) COMPLETE WITH OPTIONS FITTED ON RUBBER LINED FLANGED BODY

Drawn	RI	Date 14.08.13	UNCONTROLLED IN HARD COPY FORMAT	
Checked	JRD	Date 14.08.13		
First Angle Projection Method E		DO NOT SCALE	Drawing No. A-ES54-PLASTIC	Issue. 1